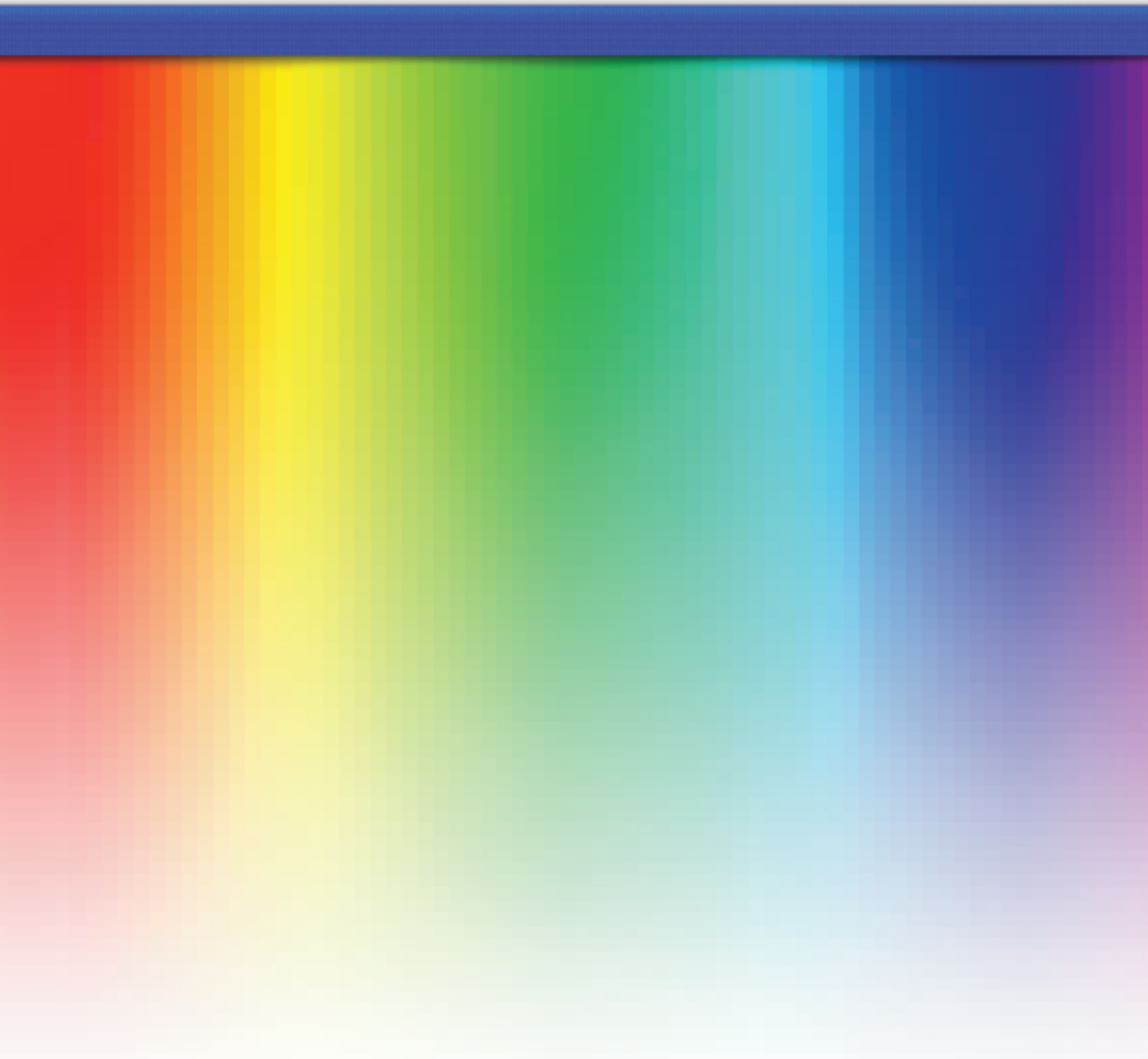


# rosco

## Catalog #49

This PDF contains interactive links. Click on product information to link to the detailed information on the Rosco web page and click on the Index and Table of Contents to go right to the product catalog page.



■ **Lighting and Projection Equipment**

Belt Drive FX Rotators .....3  
 Gear Drive Rotators .....4  
 Infinity .....4  
 X24 X-Effects Projector .....5  
 I-Cue Intelligent Mirror .....5  
 LitePad™ .....6  
 LitePad™ Accessories .....7–8  
 iPro™ Image Projector .....9  
 iPro™ Accessories .....9

■ **Color and Correction Filters**

Roscolux .....10  
 E-Colour .....10  
 Cinegel .....10  
 Specialized Filters .....10–11

■ **Color Filtration Products** .....12

■ **Gobos**

Steel and Glass .....13  
 Holders .....14

■ **Tapes** .....14

■ **Projection Screens** .....15

■ **Filmmaking Tools**

Bounce and Reflection .....16  
 Light Control Filters .....16  
 Keying Materials .....17

■ **Scenic Paint and Coatings**

Scenic Paints .....18–19  
 Fluorescent Paints .....20  
 Brushes .....20  
 Coatings .....21  
 Flame Retardants .....21

■ **Fog Products**

Fog Machines .....22–23  
 Fog Fluids .....23

■ **Dance and Performance Floors**

Floors .....24–25  
 Floor Accessories .....26

■ **Stage Hardware** .....27–28

■ **Candles** .....28

■ **Connectors** .....29

■ **Scenic Materials** .....30–31

■ **Index** .....32–33



Please note: all prices are U.S. list prices.  
 Rosco is not responsible for errors or omissions.  
 Prices subject to change without notice.  
 Catalog 49 version 1

## ■ RevoPRO™ Gobo Rotator

A dual programmable rotator which includes complete DMX controlled indexing features plus a stand-alone programmable mode that requires no DMX. Internal 100-240v mains power, so no PSU is required. Like all Rosco Revo rotators, it is built with a high temperature silicon belt drive, stepper motors, a unique threaded collar for easy installation of glass or steel gobos, friction lock for secure placement and dimmer control capability.

**RevoPRO™ Gobo Rotator \$595.00**  
No. 205 64250 0000



## ■ REVO™ Dual Indexing Rotator

Two independent variable speed stepper motors with 8 or 16-bit indexing on both wheels provide maximum design flexibility. Like all Rosco Revo rotators, it is built with a high temperature silicon belt drive, stepper motors, a unique threaded collar for easy installation of glass or steel gobos, friction lock for secure placement and dimmer control capability.

**REVO™ Dual Indexing Rotator \$495.00**  
No. 205 64200 0000



## ■ SimpleSpin™ Dual Gobo Rotator

One stepper motor, two gobos, Rosco's SimpleSpin rotator is a variable speed device capable of rotating two gobos in opposing direction. A "set and forget" on-board speed control and direction switch is included, as is an internal universal power supply at 100-240v, 50/60hz. The device can also be controlled by connecting it to a dimmer. Like all Rosco Revo rotators, it is built with a high temperature silicon belt drive, a unique threaded collar for easy installation of glass or steel gobos and a friction lock for secure placement.

**SimpleSpin™ Dual Gobo Rotator \$395.00**  
No. 205 63100 0000



## ■ Revo Rotator Accessories

**PSU-50 \$145.00**  
24v x 50 watt power supply  
No. 205 71402 005

**PSU-200 \$799.00**  
24v x 200 watt power supply  
No. 205 71402 0200

## ■ Vortex Gobo Rotator

The sleek unit houses two carefully crafted drives. A single silent motor drives both assemblies. Even at full speed, the Vortex 360 Dual Rotator is so quiet it can be used anywhere in a theatre or venue. The Vortex 360 does not require any additional power supply. The transformer/plug that comes with it can be plugged directly into a wall outlet.



**Vortex 360 Dual Rotator \$435.00**  
No. 205 83000 0000

## ■ Indexing Rotator

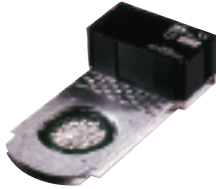
Rosco's Indexing Rotators are Double and Single Gobo Rotators which allow you to stop and start the gobo's rotation precisely, whenever and wherever you want. This is particularly useful for repetitive effects, such as the hands of a gobo clock, or for architectural effects, such as a shop display window. Rosco's Indexing Rotators are controlled through DMX512 and the DMX addressing facility is built into the unit. A Power Supply Unit is necessary to get 24v DC to the Indexer(s).



**Single Indexing Gobo Rotator \$680.00**  
No. 205 11100 0120  
**Double Indexing Gobo Rotator \$870.00**  
No. 205 21100 0120

## ■ Double Gobo Rotator

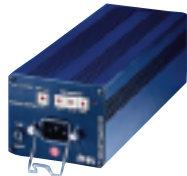
Rosco's Double Gobo Rotator allows you to achieve kinetic and often spectacular lighting effects by rotating two gobos in the same or opposite directions, at the same or varying speeds. This unit requires a controller or MFX Control Adaptor.



**Double Gobo Rotator**  
**DC Vari-Speed, 0-9 RPM \$670.00**  
No. 205 21000 0120

## ■ DMX/DC Controller

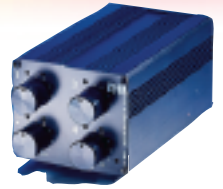
The Rosco DMX/DC Controller provides power and speed control for the Double Gobo Rotator or other variable speed effects. It is intended for remote control via a DMX512 signal. The output circuitry of Rosco's DMX/DC Controller is identical to that of its four channel Variable Speed Controller. Speed, range, bi-directional drive, load compensation and output protection are all maintained.



**DMX/DC Controller \$655.00**  
No. 205 45000 0120

## ■ Variable Speed Controller

This four channel Variable Speed Controller is designed to provide power, direction and speed control for variable speed rotator units on four independent channels. Output connections are made via four conductor cables terminating in two 4-pin XLR connectors.



**Four Channel Controller \$600.00**  
No. 205 46000 0120

## ■ Rotator Accessories

**Single MFX Control Adaptor**  
**(forward control only) \$64.00**  
No. 205 47000 0120

**Double MFX Control Adaptor**  
**(offers control in opposing direction only) \$72.00**  
No. 205 48000 0120

**DC Splitter Cable \$48.00**  
No. 205 70001 0000

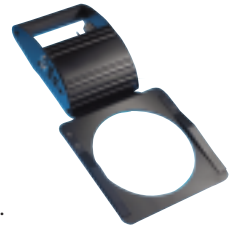
**4 Pin Extension Cable - 25' \$57.00**  
No. 205 70002 0025

**4 Pin Extension Cable - 50' \$65.00**  
No. 205 70002 0050

**Mounting Kit for DC/DMX Controller and**  
**a Variable Speed Controller \$53.00**  
No. 205 70003 0KIT

## ■ Infinity Gobo Animation Device

The Infinity Gobo Animation Device, which can be attached to virtually any spotlight, will accept an Infinity Disk. It is usually used with a steel or glass gobo in the gate to provide unusual kinetic effects. The Infinity is equipped with on-board control of the Infinity Disk speed and direction, as well as an on/off switch. Supplied with an adaptor plate and one Infinity Disk of your choice.



**Infinity \$499.00**  
No. 205 82500 0000

## ■ Infinity Disks

Infinity disks are etched stainless steel disks powder coated to prevent reflection. Eleven designs are available. The disks are 16.5"(42cm) in diameter.

**Infinity Disks \$99.00 each**

30011 Tangential Breakup	30017 Elliptical Breakup
30012 Radial Breakup	30018 Dot Breakup
30013 Spiral Breakup	30019 Flicker Breakup
30014 Linear Breakup	30020 Coarse Radial Breakup
30015 Triangle Breakup	30021 Coarse Tangential Breakup
30016 Cloud Breakup	

## ■ X24 X-Effects Projector

This has become the projector of choice for shows or installations requiring a fire or water effect. It provides stunning rippling light effects previously unavailable to designers. The projector is available with on-board DMX for theatrical applications and in an analog version for retail, museum or architectural applications.



**X24 DMX X-Effects - Black (lens sold separately) \$3,245.00**

No. 205 37015 0120

**X24 Analog X-Effects - Black (lens sold separately) \$2,849.00**

No. 205 37020 0120

**X24 DMX X-Effects - White (lens sold separately) \$3,245.00**

No. 205 37025 0120

**X24 Analog X-Effects - White (lens sold separately) \$2,849.00**

No. 205 37030 0120

**19 Degree Lens for X-Effects \$150.00**

No. 205 37119 0000

**30 Degree Lens for X-Effects \$150.00**

No. 205 37130 0000

**50 Degree Lens for X-Effects \$150.00**

No. 205 37150 0000

**70 Degree Lens for X-Effects \$150.00**

No. 205 37170 0000

**X24 Lamp – emARC SMR202/D1 \$355.00**

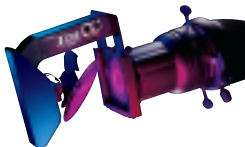
No. 205 36101 0000

**X24 DMX Complete \$3,395.00**

**X24 Analog Complete \$2,999.00**

## ■ I-Cue Intelligent Mirror

A spotlight attachment to re-position a beam of light. This allows a single spotlight in a fixed position to be used for multiple specials in dozens of locations.



Onboard DMX is included. A Power Supply Unit is necessary to get 24v DC to the I-Cue.

**I-Cue \$695.00**

No. 205 81000 0120

## ■ Power Supply Units

Rosco's power supplies are compatible with nearly all color scrollers, gobo rotators and other accessory devices in common use. The PSU-200 has four outputs and four returns. It can be pipe mounted with a C-Clamp or other hanging device. PSU-51 has a DMX passthrough.



PSU-200

**PSU-200 \$799.00**

No. 205 71402 0200

**PSU-50 \$145.00**

No. 205 71402 005

**PSU-51 \$175.00**

No. 205 71402 0051

## ■ LitePad Axiom

The LitePad Axiom range is a series of LED light sources designed specifically for filmmakers, videographers and photographers. The housing not only protects the light source, it also provides a universal mounting system. This allows the LitePad Axiom units to be affixed with brackets for C-Stands or mounted with Velcro or other conventional methods. Each product is available with either tungsten-level or daylight-level output and with or without a transformer.

### LitePad Axiom Daylight

**LitePad Axiom 3" x 6" Daylight \$195.00**

No. 290 70306 0120

**LitePad Axiom 3" x 12" Daylight \$269.00**

No. 290 70312 0120

**LitePad Axiom 6" x 6" Daylight \$269.00**

No. 290 70606 0120

**LitePad Axiom 6" x 12" Daylight \$469.00**

No. 290 70612 0120

**LitePad Axiom 12" x 12" Daylight \$599.00**

No. 290 71212 0120

**LitePad Axiom 24" x 24" Daylight \$899.00**

No. 290 72424 0120

### LitePad Axiom Tungsten

**LitePad Axiom 3" x 6" Tungsten \$195.00**

No. 290 80306 0120

**LitePad Axiom 3" x 12" Tungsten \$269.00**

No. 290 80312 0120

**LitePad Axiom 6" x 6" Tungsten \$269.00**

No. 290 80606 0120

**LitePad Axiom 6" x 12" Tungsten \$469.00**

No. 290 80612 0120

**LitePad Axiom 12" x 12" Tungsten \$599.00**

No. 290 81212 0120

**LitePad Axiom 24" x 24" Tungsten \$899.00**

No. 290 82424 0120



## ■ LitePad™ HO+

LitePad HO+ is a slim profile, edge-lit LED light source. At only 1/8" thick, LitePad HO+ produces a soft quality of light that is easy on the eyes and runs at cool temperatures. Available in eight standard sizes, in either tungsten-level or daylight-level outputs and with or without transformers.

### LitePad HO+ Daylight

**LitePad 3" x 6" HO+ Daylight \$145.00**

No. 290 40306 0120

**LitePad 3" x 12" HO+ Daylight \$219.00**

No. 290 40312 0120

**LitePad 6" x 6" HO+ Daylight \$219.00**

No. 290 40606 0120

**LitePad 6" x 12" HO+ Daylight \$419.00**

No. 290 40612 0120

**LitePad 12" x 12" HO+ Daylight \$549.00**

No. 290 41212 0120

**LitePad 24" x 24" HO+ Daylight \$825.00**

No. 290 42424 0120

**LitePad 3" Circle HO+ Daylight \$89.00**

No. 290 40003 0120

**LitePad 12" Circle HO+ Daylight \$525.00**

No. 290 40012 0120

### LitePad HO+ Tungsten

**LitePad 3" x 6" HO+ Tungsten \$145.00**

No. 290 50306 0120

**LitePad 3" x 12" HO+ Tungsten \$219.00**

No. 290 50312 0120

**LitePad 6" x 6" HO+ Tungsten \$219.00**

No. 290 50606 0120

**LitePad 6" x 12" HO+ Tungsten \$419.00**

No. 290 50612 0120

**LitePad 12" x 12" HO+ Tungsten \$549.00**

No. 290 51212 0120

**LitePad 24" x 24" HO+ Tungsten \$825.00**

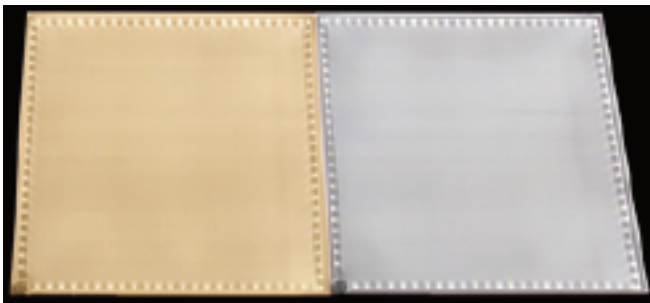
No. 290 52424 0120

**LitePad 3" Circle HO+ Tungsten \$89.00**

No. 290 50003 0120

**LitePad 12" Circle HO+ Tungsten \$525.00**

No. 290 50012 0120



*LitePad HO+ is available in Tungsten and Daylight.*

## ■ LitePad™ DL

LitePad DL is a slim profile (1/8") light source that delivers soft, even illumination in a sustainable, energy-efficient LED package, consuming about 40% less energy than LitePad HO+. LitePad DL was designed with event planners, theatrical lighting and architectural designers in mind, offering a more economical lighting solution for these professionals. Available in six standard sizes in daylight-level outputs and with or without transformers.

### LitePad DL Daylight

**LitePad 3" x 3" DL \$49.00**

No. 290 10303 0120

**LitePad 3" x 6" DL \$99.00**

No. 290 10306 0120

**LitePad 3" x 12" DL \$150.00**

No. 290 10312 0120

**LitePad 6" x 6" DL \$140.00**

No. 290 10606 0120

**LitePad 6" x 12" DL \$325.00**

No. 290 10612 0120

**LitePad 12" x 12" DL \$500.00**

No. 290 11212 0120



## ■ LitePad™ Kits

Rosco offers four different kits for filmmakers, digital shooters and still photographers. Each of the four is available with a full complement of Axiom LitePads and the required accessories for focusing, mounting, and coloring. Kits can be specified with either daylight-level output LitePads or tungsten-level output. A fifth kit, the HO+ Everywhere Kit, is equipped with both tungsten and daylight level HO+ LitePads.

See the Rosco web site for details on what is in each kit.

### **LitePad Pro Gaffer's Kit AX: Daylight \$3,899.00**

No. 290 240AXGKIT

### **LitePad Digital Shooters Kit AX: Daylight \$2,999.00**

No. 290 2400DSKIT

### **LitePad Quick Kit AX: Daylight \$2,299.00**

No. 290 240AXBKIT

### **LitePad Still Photo Kit AX: Daylight \$899.00**

No. 290 2400SPKIT

### **LitePad Pro Gaffer's Kit AX: Tungsten \$3,899.00**

No. 290 241AXGKIT

### **LitePad Digital Shooters Kit AX: Tungsten \$2,999.00**

No. 290 2410DSKIT

### **LitePad Quick Kit AX: Tungsten \$2,299.00**

290 241AXBKIT

### **LitePad Still Photo Kit AX: Tungsten \$899.00**

290 2410SPKIT

### **LitePad HO+ Everywhere Lighting Kit \$3,599.00**

No. 290 2400ELKIT



*Digital Shooter LitePad Kit*

## ■ LitePad™ Accessories

Accessories are generally included in the various LitePad kits, but they are also available individually.

### **LitePad 1 amp Transformer - US style \$15.00**

No. 290 63501 0120

### **LitePad 3 amp Transformer \$20.00**

No. 290 63503 0120

### **LitePad 5 amp Transformer \$30.00**

No. 290 63505 0120

### **Car Adapter \$25.00**

No. 290 63600 0000

### **Y Splitter \$20.00**

No. 290 63700 0000

### **10 ft. Extension Cable \$15.00**

No. 290 63750 0000

### **4-Way Sputter \$24.00**

No. 290 63730 0000

### **AA Battery Holder \$20.00**

No. 290 63651 0812

### **4-Pin Adapter Cable \$24.99**

No. 290 63770 0012

### **Anton/Bauer Adapter \$44.99**

No. 290 63790 0012

### **Right Angle 10' Extension Cable \$15.00**

No. 290 63751 0000

### **LitePad 3" Mounting Bracket \$24.99**

No. 290 63900 0003

### **LitePad 6" Mounting Bracket \$34.99**

No. 290 63900 0006

### **LitePad 12" Mounting Bracket \$44.99**

No. 290 63900 0012

### **LitePad 24" Mounting Bracket \$79.00**

No. 290 63900 0024

### **1/4 – 20 Baby (5/8) Pin \$6.00**

No. 290 63910 1420

### **LitePad Axiom 1/4 – 20 Bracket \$14.99**

No. 290 63901 1420

### **LitePad Axiom Baby Pin Bracket \$19.95**

No. 290 63901 0058

### **LitePad Axiom 5/8 Receiver Bracket \$44.99**

No. 290 63901 0158

### **LitePad Axiom Wall Plate Bracket \$39.99**

No. 290 63901 0304

### **LitePad Axiom Battery Holder (for AA Battery) \$14.99**

No. 290 63901 8080

### **3" x 6" Eggcrate \$14.99**

No. 290 65000 0306

### **3" x 12" Eggcrate \$16.99**

No. 290 65000 0312

### **6" x 6" Eggcrate \$16.99**

No. 290 65000 0606

### **6" x 12" Eggcrate \$19.99**

No. 290 65000 0612

### **12" x 12" Eggcrate \$39.99**

No. 290 65000 1212

### **24" x 24" Eggcrate \$49.99**

No. 290 65000 2424

## ■ LitePad™ Accessories – continued

**Single Fader Dimmer \$125.00**

No. 290 64000 0012

**2CH/DMX Dimmer \$299.00**

No. 290 64100 0012

**LitePad Light Stand \$75.00**

No. 290 66104 9089

**LitePad Snake Arm \$30.00**

No. 290 66114 2002

**LitePad Swivel Arm \$35.00**

No. 290 66158 1420

**LightPad Cold Shoe Attachment \$12.00**

No. 290 66100 1420

**3" Circle Medium Spot Lens \$12.00**

No. 290 67001 0003

**3" x 6" Medium Spot Lens \$12.00**

No. 290 67001 0306

**3" x 12" Medium Spot Lens \$15.00**

No. 290 67001 0312

**6" x 6" Medium Spot Lens \$15.00**

No. 290 67001 0606

**6" x 12" Medium Spot Lens \$25.00**

No. 290 67001 0612

**12" x 12" Medium Spot Lens \$45.00**

No. 290 67001 1212

**24" x 24" Medium Spot Lens \$125.00**

No. 290 67001 2424

**12" Circle Medium Spot Lens \$50.00**

No. 290 67001 0012

**3" Circle Full Spot Lens \$22.00**

No. 290 67002 0003

**3" x 6" Full Spot Lens \$22.00**

No. 290 67002 0306

**3" x 12" Full Spot Lens \$29.00**

No. 290 67002 0312

**6" x 6" Full Spot Lens \$29.00**

No. 290 67002 0606

**6" x 12" Full Spot Lens \$49.00**

No. 290 67002 0612

**12" x 12" Full Spot Lens \$89.00**

No. 290 67002 1212

**24" x 24" Full Spot Lens \$249.00**

No. 290 67002 2424

**12" Circle Full Spot Lens \$99.00**

No. 290 67002 0012

## ■ LitePad™ Accessories – continued

**Digital Shooter LitePad Case \$625.00**

No. 290 63860 0000

**Still Photo LitePad Case \$250.00**

No. 290 63870 0000

**Gaffer's AX LitePad Case \$625.00**

No. 290 63851 0000

**Quick AX LitePad Case \$550.00**

No. 290 63855 0000

**24" x 24" LitePad Case \$249.00**

No. 290 63880 0000

**3" x 6" Axiom Housing \$50.00**

No. 290 69999 0306

**3" x 12" Axiom Housing \$50.00**

No. 290 69999 0312

**6" x 6" Axiom Housing \$50.00**

No. 290 69999 0606

**6" x 12" Axiom Housing \$50.00**

No. 290 69999 0612

**12" x 12" Axiom Housing \$50.00**

No. 290 69999 1212

**24" x 24" Axiom Housing \$74.00**

No. 290 69999 2424



*LitePad accessory: Full Spot Lens*

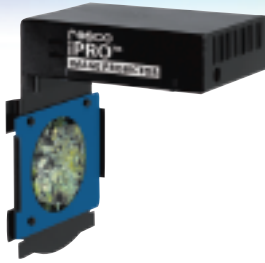


*LitePad accessory: Swivel Arm*



## ■ iPro™ Image Projector

The iPro fits as an accessory into the iris slot of a typical ETC Source Four, Altman Shakespeare, Strand SL or Selecon Pacific light fixture. Fitted with an iPro Slide, the iPro™ delivers bright, visible full-color images that will last between 15 and 50 hours.



**iPro Image Projector \$295.00**  
No. 265 25100 0120

## ■ iPro™ Slide Film

For use with the Rosco iPro, iPro Slide Film has been formulated from the ground up to produce the highest quality iPro Slide possible.



**iPro Slide Film—10 sheet pack (LTR Size) \$33.00**  
No. 265 27995 0010  
**iPro Slide Film—25 sheet pack (LTR Size) \$67.50**  
No. 265 27995 0025

## ■ iPro Printing Pack

**Contains 10 sheets of iPro Slide Film and 10 One-Time iPro Slide Kits \$225.00**  
No. 265 27985 0010

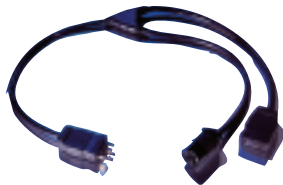
## ■ iPro™ One-Time Slide Mount

Contains the slide mount and protective film necessary to make an effective iPro Slide. Using your own transparency film and your own printer to create the image, you can then assemble a finished iPro Slide. *Transparency film not included.*

**iPro Slide Mount \$29.00**  
No. 265 27999 0860

## ■ Hybrid Two-Fer

This accessory allows you to connect the iPro and your light fixture into the same dimmer. The two-fer is configured with a male stage-pin connector for the dimmer and both a female stage pin connector for the light and a female parallel blade connector for the iPro.

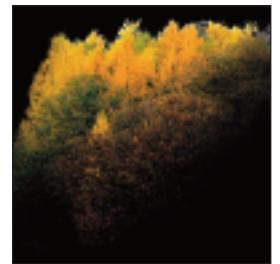


**Hybrid Two-Fer \$54.95**  
No. 265 25500 0000

## ■ iPro™ Slide Library

Designed specifically for the iPro, Rosco offers images in a wide range of categories that are certain to suit your needs for most theatrical productions and live entertainment events.

**iPro Slide-Library Image \$39.00**



## ■ Custom iPro™ Slide

Virtually any design you can create on your computer can be made into a Custom iPro Slide in just one day. Using Adobe Photoshop or similar software, prepare your design and send it to Rosco at [customgobo@rosco.com](mailto:customgobo@rosco.com). Within 24 hours, your finished assembled iPro slide will be on its way back to you.

**Custom iPro Slide \$39.00**  
No. 265 27000 0860



## ■ Roscolux

Roscolux is the most widely used color filter range for theatre, film, television, live entertainment and architectural applications. For a detailed list of the colors and diffusers of the range consult the Roscolux swatchbook or Rosco web site.



**Roscolux Sheets 20" x 24" \$8.25**  
**Rolls 24" x 25' \$117.00**

## ■ E-Colour

A comprehensive range of European color and correction filters based on the Cinemoid™ system. For a detailed list of colors, diffusers and reflection materials consult the E-Colour swatch book or the Rosco web site.



**E-Colour Sheets 21" x 24" \$7.60**  
**E-Colour Rolls 48" x 25' \$165.00**

## ■ Cinegel

The Academy Award® winning range of color and correction filters, Cinegel includes diffusers, reflectors and the Storaro Selection and CalColor filters. For a detailed list of products, consult the Cinegel swatch book or the Rosco web site.



**Cinegel Sheets 20" x 24" \$8.25**  
**Cinegel Rolls \$175.00**  
 (Most rolls are 48" x 25'. )

## ■ DichroFilm™

DichroFilm combines the flexibility, light weight and safe characteristics of a plastic gel with the longevity and heat resistance of a dichroic filter. Manufactured on 5-mil thick hi-temp plastic, DichroFilm will outlast any ordinary plastic filter. It is ideal for permanent installations where a flexible filter is required or where installing glass could pose a safety hazard.

### Standard Colors

Standard Colors		Sizes	
Primary Blue	No. 106 09108	25" x 25"	\$475.00
CTB Daylight	No. 106 09320	10" x 10"	135.00
CTO Tungsten	No. 106 09340	7.5" x 7.5"	60.00
Indigo	No. 106 09460	6" x 6"	35.00
Magenta	No. 106 09476		
Primary Green	No. 106 09520		
Yellow	No. 106 09550		
Cyan	No. 106 09559		
Orange	No. 106 09590		
Red	No. 106 09650		

## PROTECTIVE FILTERS

### ■ Thermashield

When used in conjunction with Roscolux or Cinegel color filters, Thermashield prevents the color filters from absorbing IR energy as heat, thus allowing the filters to last much longer.

**Thermashield 12" x 12" \$29.00**  
 No. 101 01995 1212  
**Thermashield 20" x 24" \$59.00**  
 No. 101 01995 2024  
**Thermashield 48" x 48" \$239.00**  
 No. 101 01995 4804

### ■ Super Heat Shield™

Super Heat Shield is a heat resistant plastic that acts as a barrier, blocking the heat of a fixture. For maximum efficiency, a minimum 1" air space must be maintained between Super Heat Shield and the color filter.

**Super Heat Shield 20" x 24" sheet \$13.75**  
 No. 101 01991 2024  
**Super Heat Shield 24" x 25' roll \$169.95**  
 No. 101 01991 2425  
**Super Heat Shield 24" x 50' roll \$329.50**  
 No. 101 01991 2450  
**Super Heat Shield 48" x 25' roll \$329.50**  
 No. 101 01991 4825

### ■ UV Filter™

Rosco UV Filter effectively extends the life of your color filter by absorbing the damaging ultraviolet energy that can prematurely fade dyes.

**UV Filter 20" x 24" sheet \$7.50**  
 No. 101 03114 2024  
**UV Filter 24" x 50' roll \$170.00**  
 No. 101 03114 2450  
**UV Filter 48" x 25' roll \$165.00**  
 No. 101 03114 4825

### ■ Safety Frames™

For use with Roscolux, Cinegel or E-Colour gel filters. Made from FRP, an Underwriter's Laboratories approved flame retardant fiberboard. The material remains cool for safe handling and has a UL94 Flammability Classification of 94V-0.

No. 110 08600

Add to Product No.	Frame Size	Lens Size	
0425	4 1/4"	3 5/8"	\$2.85
0750	7 1/2"	5 7/8"	3.85
0975	9 3/4"	7 3/4"	5.50
0625	6 1/4"	5"	3.50

**Color Effects Kit**

The fifteen color effects filters in this kit are the most popular selections from the 300-plus colors that Rosco produces for theatre, film and television. Available either 10" x 12" in a durable plastic pouch, or 20" x 24" in a convenient tube.

**Color Effects Kit 10" x 12" \$38.30**

No. 110 09040 SKIT

**Color Effects Kit 20" x 24" \$98.50**

No. 110 09040 LKIT

**Color Correction Kit**

This kit permits the color correction of virtually all mixed-light sources found on location. There are sixteen materials, including a range of blue and amber color correction filters, along with a selection of green and magenta color compensating filters. Available either 10" x 12" in a durable plastic pouch, or 20" x 24" in a convenient tube.

**Color Correction Kit 10" x 12" \$38.30**

No. 110 09030 SKIT

**Color Correction Kit 20" x 24" \$98.50**

No. 110 09030 LKIT

**Cinegel Sampler Kit**

This is an all-purpose selection of the most popular Cinegel products. There are fifteen light control materials, including diffusion, reflection, color effects filters and color correction filters. Available either 10" x 12" in a durable plastic pouch, or 20" x 24" in a convenient tube.

**Cinegel Sampler Kit 10" x 12" \$38.30**

No. 110 09010 SKIT

**Cinegel Sampler Kit 20" x 24" \$98.50**

No. 110 09010 LKIT

**CalColor Kit**

The CalColor Kit consists of 10" x 12" sheets of the 32 colors in the CalColor range.

**CalColor Kit 10" x 12" \$54.70**

No. 110 04000 OKIT

**Diffusion Kit**

Diffusion materials help modify the harsh character of a light source by softening the beam and the resulting shadows. The fifteen materials included in this kit offer a range of diffusion effects, from slight to dense, for dealing with a variety of light sources and situations. Available either 10" x 12" in a durable plastic pouch, or 20" x 24" in a convenient tube.

**Diffusion Kit 10" x 12" \$38.30**

No. 110 09020 SKIT

**Diffusion Kit 20" x 24" \$98.50**

No. 110 09020 LKIT

**Permacolor Dichroic Glass Filters**

Rosco Permacolor dichroic glass filters are the perfect choice for designers requiring long-lasting, high-quality filters. Permacolor withstands the heat of high temperature lighting fixtures like MR16, metal halide discharge, and high wattage tungsten lamps and are ideal for use in permanent installations.

Rosco's range of standard colors includes the bright saturated colors prone to premature fading in gel as well as a selection of pale tints and accent colors selected by leading architectural designers around the world.

**STANDARD STOCK COLORS**

Color	No.	Color	No.
<b>Mauve</b>	<b>1050</b>	<b>Lavender 57</b>	<b>1057</b>
<b>Indigo</b>	<b>1059</b>	<b>Light Green Blue</b>	<b>1076</b>
<b>Gaslight Green</b>	<b>3388</b>	<b>Victoriam Gold</b>	<b>3114</b>
<b>Double Coated</b>		<b>Primary Red</b>	<b>36500</b>
<b>UV Pass</b>	<b>3660</b>	<b>Flame Red</b>	<b>36100</b>
<b>Sky Blue</b>	<b>35400</b>	<b>Orange</b>	<b>35900</b>
<b>Light Blue Green</b>	<b>35100</b>	<b>Medium Orange</b>	<b>35600</b>
<b>Primary Blue</b>	<b>31080</b>	<b>Amber</b>	<b>35401</b>
<b>Medium Red Blue</b>	<b>34600</b>	<b>Yellow</b>	<b>35200</b>
<b>Deep Purple</b>	<b>34200</b>	<b>Light Yellow Green</b>	<b>34959</b>
<b>Lavender</b>	<b>34965</b>	<b>Fern Green</b>	<b>35156</b>
<b>Vivid Magenta</b>	<b>34640</b>	<b>Primary Green</b>	<b>35055</b>
<b>Deep Magenta</b>	<b>34763</b>	<b>Turquoise</b>	<b>34853</b>
<b>Hot Pink</b>	<b>34630</b>	<b>Sea Blue</b>	<b>35700</b>
<b>Medium Pink</b>	<b>34758</b>	<b>Cyan</b>	<b>35590</b>
<b>Light Pink</b>	<b>31033</b>		

**ARCHITECTURAL SERIES AND CINEDICHRO™ COLORS**

Color	No.	Color	No.
<b>¼ CTB</b>	<b>3203</b>	<b>Cinedichro ¼ CTO</b>	<b>43409</b>
<b>¼ Minus Green</b>	<b>3314</b>	<b>Cinedichro White</b>	
<b>½ Minus Green</b>	<b>3313</b>	<b>Diffusion</b>	<b>43026</b>
<b>¾ Minus Green</b>	<b>3318</b>	<b>IR/UV Filter</b>	<b>38000</b>
<b>Neutral Density .15</b>	<b>3415</b>	<b>Lavender Accent</b>	<b>31054</b>
<b>Neutral Density .3</b>	<b>3402</b>	<b>Purple Fusion</b>	<b>31048</b>
<b>Neutral Density .6</b>	<b>3403</b>	<b>Pale Pink</b>	<b>31337</b>
<b>¼ CTO</b>	<b>3410</b>	<b>Peacock Blue</b>	<b>31073</b>
<b>¾ CTO</b>	<b>3411</b>	<b>Amber Blush</b>	<b>31018</b>
<b>Cinedichro Full</b>		<b>Mediterranean Blue</b>	<b>31065</b>
<b>Blue CTB</b>	<b>43202</b>	<b>Bastard Amber</b>	<b>31002</b>
<b>Cinedichro ½ Blue</b>		<b>Booster Blue</b>	<b>31062</b>
<b>CTB</b>	<b>43204</b>	<b>Goldenrod</b>	<b>31013</b>
<b>Cinedichro ¼ Blue</b>		<b>Lilac</b>	<b>31055</b>
<b>CTB</b>	<b>43208</b>	<b>Bright Straw</b>	<b>31012</b>
<b>Cinedichro Full CTO</b>	<b>43407</b>	<b>Industrial Green</b>	<b>31086</b>
<b>Cinedichro ½ CTO</b>	<b>43408</b>		

**Permacolor Technical Coatings**

**IR/UV Filter (Hot Mirror) POA**

No. 120 38000

A clear glass filter, IR/UV is designed to pass visible light while reflecting both infrared (700nm – 1200nm) and near UV energy (325nm – 400nm).

**UV Blocking Filter POA**

No. 120 34000

Rosco's UV Blocking Filter offers more complete filtration of ultraviolet energy, blocking wavelengths from 250nm to 400nm.

## ■ Permacolor Frames

(Safety Grid Included)

**Permacolor Frame 6.25" \$17.00**

No. 97625

**Permacolor Frame 7.5" x 7.5" \$18.25**

No. 97750

**Permacolor Frame 10" x 10" \$23.00**

No. 97100

## ■ MR-16 Filter Holder

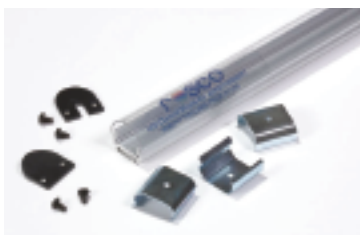
A simple solution for adding color filters or patterned glass to your MR-16 lamps.

**MR-16 Filter Holder \$4.00**

No. 120 97195 0000

## ■ LED Channel Mount

Rosco's LED Channel Mount Kit allows designers to add Rosco color and diffusion filters to LED tape or ribbon, and package it in an elegant and practical housing. The Kit consists of a 72" long extruded aluminum heat-sink, a clear plastic cover, three mounting clips and end caps. Four Rosco color filters are available, cut-to-size, for individual sale. All other Rosco color filters are available, cut-to-size, in lots of 20.



**LED Channel Mount - 6ft (1.8m) Kit Complete \$96.95**

No. 295610000072

**LED Channel Mount - Adjustable Bracket Complete \$35.00**

No. 295611010003

**LED CM Diffusion - Tough Rolux - 1/8" (3.6cm) x 6ft (1.8m) \$4.00**

No. 295701110072

**LED CM Filter - CTO - 1/8" (3.6cm) x 6ft (1.8m) \$4.00**

No. 295734070072

**LED CM Filter - 1/2 CTO - 1/8" (3.6cm) x 6ft (1.8m) \$4.00**

No. 295734080072

**LED CM Filter - 1/4 CTO - 1/8" (3.6cm) x 6ft (1.8m) \$4.00**

No. 295734090072

**LED CM Filter - OTHER COLOR - 1/8" (3.6cm) x 6ft (1.8m) - QTY 20 \$80.00**

No. 295799992072

## ■ Lens/Reflector Cleaner

The professional's choice for over 50 years. Specially designed for cleaning lenses, mirrors, reflectors, glass and dichroic filters, and other fine quality optics.

**Lens Cleaner 2 ounce drip bottle \$ 3.95**

No. 855 07202 0002

**Lens Cleaner 8 ounce spray bottle \$10.95**

No. 855 07202 0008

**Lens Cleaner 16 ounce bulk bottle \$17.95**

No. 855 07202 0016

## ■ Lens Tissue

Premium, lightweight, disposable, micro-fiber tissue for cleaning lenses, filters and optics.

**Lens Tissue 4" x 6" booklet \$3.95**

No. 855 07204 0406

## ■ Storage Drawers

Heavy gauge two-inch deep corrugated drawer and sleeve that accepts 20" x 24" sheets of Rosco color filters.

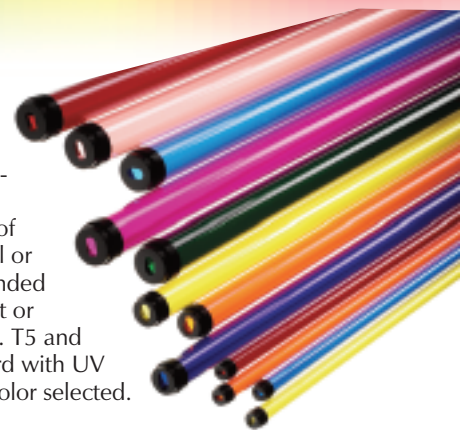
Shipped completely assembled. Packed six to a case.

**Storage Drawers (set of 6) \$59.00**

No. 110 08610 0000

## ■ Roscosleeves™

For simple and economical control of fluorescent lighting, Roscosleeves can be supplied in any Rosco filter color—or combination of colors) Roscolux, Cinegel or E-Colour. Not recommended for use with High Output or Very High Output lamps. T5 and T8 Sleeves come standard with UV filter in addition to the color selected.



<b>T5 x 24"</b>	<b>\$8.95</b>	No. 110 08401 2405
<b>T8 x 24"</b>	<b>8.95</b>	No. 110 08401 2408
<b>T12 x 24"</b>	<b>7.95</b>	No. 110 08401 2412
<b>T5 x 36"</b>	<b>16.95</b>	No. 110 08401 3605
<b>T8 x 36"</b>	<b>16.95</b>	No. 110 08401 3608
<b>T12 x 36"</b>	<b>14.95</b>	No. 110 08401 3612
<b>T5 x 48"</b>	<b>16.95</b>	No. 110 08401 4805
<b>T8 x 48"</b>	<b>16.95</b>	No. 110 08401 4808
<b>T12 x 48"</b>	<b>14.95</b>	No. 110 08401 4812
<b>T5 x 60"</b>	<b>21.25</b>	No. 110 08401 6005
<b>T8 x 60"</b>	<b>21.25</b>	No. 110 08401 6008
<b>T8 x 96"</b>	<b>29.00</b>	No. 110 08401 9608
<b>T12 x 96"</b>	<b>22.50</b>	No. 110 08401 9612

## ■ ChromaSleeves

ChromaSleeves are body-colored, extruded polycarbonate sleeves with an added UV absorber to prevent premature color fading. Available in nine standard stocked colors or custom colors matched to any Rosco filter. Not recommended for use with High Output or Very High Output lamps

<b>Dark Blue</b>	No. 110 08410	<b>Pink</b>	No. 110 08414
<b>Green</b>	No. 110 08411	<b>Yellow</b>	No. 110 08415
<b>Red</b>	No. 110 08412	<b>Amber</b>	No. 110 08417
<b>Purple</b>	No. 110 08413		

Add suffix to product code for each size

<b>T5 x 48"</b>	<b>\$13.25</b>	4805
<b>T8 x 48"</b>	<b>13.25</b>	4808

## ■ Quick Color Sleeves

This gel-only product is a flat welded tube of Rosco color filter, made in any color from any line of Rosco gel. T5 and T8 sleeves come standard with UV filter. Folded flat for easy shipping and storage, the sleeve puffs open like an envelope to slide over any size or shape of fluorescent tube. Not recommended for use with High Output or Very High Output lamps



<b>T5 x 24"</b>	<b>\$11.95</b>	No. 110 08430 2405
<b>T8 x 24"</b>	<b>11.95</b>	No. 110 08430 2408
<b>T12 x 24"</b>	<b>11.95</b>	No. 110 08430 2412
<b>T5 x 36"</b>	<b>12.95</b>	No. 110 08430 3605
<b>T8 x 36"</b>	<b>12.95</b>	No. 110 08430 3608
<b>T12 x 36"</b>	<b>12.95</b>	No. 110 08430 3612
<b>T5 x 48"</b>	<b>13.95</b>	No. 110 08430 4805
<b>T8 x 48"</b>	<b>13.95</b>	No. 110 08430 4808
<b>T12 x 48"</b>	<b>13.95</b>	No. 110 08430 4812
<b>T5 x 60"</b>	<b>17.95</b>	No. 110 08430 6005
<b>T8 x 60"</b>	<b>17.95</b>	No. 110 08430 6008
<b>T12 x 60"</b>	<b>17.95</b>	No. 110 08430 6012

Please specify Rosco gel color when ordering.

**Gobo Catalog**

Rosco's Gobo Catalog lists the entire range of standard gobos available, as well as several pages of useful technical information. It is available from any Rosco office or reseller or may be downloaded from the Rosco website. You can also choose gobos from the Rosco web site (www.rosco.com) or from the free MyGobo app for iPhones, iPads, and iPod Touch.



**Standard Designs**

Rosco offers approximately 2,000 standard designs in its gobo collection. Each design is available for virtually any known fixture used in theatrical or display lighting. Rosco re-sellers can usually deliver standard gobos either off the shelf or within a day or two.



No. 77730

**Standard metal gobos \$13.50**

**Standard mesh designs \$19.75**

**Standard B&W glass gobos A, B or M size \$85.00**

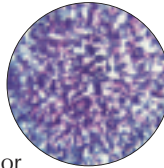
**Moving light sizes \$59.50**

**Standard 2-color gobos \$150.00**

**Standard multi-color gobos \$350.00**

**Colorizers™**

Multi-colored glass gobos that can be used alone or in combination with a steel gobo. Recommended for fixtures up to 1,000 watts. Requires the use of either a Glass Gobo Holder or the Universal Iris Slot Holder.



\*No. 55004

**Colorizer B size and Moving Light size \$65.00**

**Colorizer X size (for use in Rosco's X24) \$79.00**

*Designs marked with an asterisk (\*) are available in X size*

**Stippled Series**

- Blue and Lavender \*No. 55004
- Amber and Red \*No. 55005
- Red, Blue and Lavender \*No. 55006
- Green, Blue and Lavender \*No. 55007
- Green and Yellow \*No. 55008

**Featherlight Series**

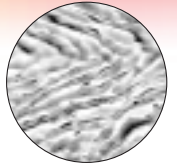
- Blue, Lavender and Yellow No. 56201
- Blue and Green No. 56202
- Red, Lavender and Yellow No. 56203
- Blue and Lavender No. 56204
- Green and Yellow No. 56205

**Free Flow Series**

- Cool: Blues, Reds and Lavenders \*No. 56101
- Warm: Red, Ambers, Blue and Lavenders \*No. 56102
- Midnight: Blues, Lavenders and Greens \*No. 56103

**Image Glass™**

Deeply textured glass gobos that bend or refract light. Recommended for use in moving lights with lamps up to 1200 watts and in ellipsoidal fixtures up to 600 watts. Requires the use of the Universal Iris Slot Holder.



No. 33621

**Image Glass B size and sized for moving lights \$37.50**

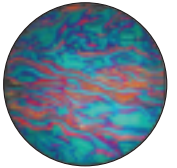
**Image Glass X size (for use in Rosco's X24) \$52.50**

*Designs marked with an asterisk (\*) are available in X size*

- |              |            |                 |            |
|--------------|------------|-----------------|------------|
| Flower       | *No. 33600 | Random Blisters | No. 33614  |
| Lined        | *No. 33601 | Coalescing      |            |
| Plume        | No. 33602  | Bubbles         | *No. 33615 |
| Lt. Plume    | No. 33603  | Raised Mosaic   | No. 33616  |
| Pebble       | No. 33604  | Hammered        | *No. 33617 |
| Honeycomb    | *No. 33605 | Wood Grain      | *No. 33618 |
| Waves        | *No. 33606 | Ripples         | *No. 33619 |
| Irregular    |            | Ice             | *No. 33620 |
| Strands      | *No. 33607 | Dune            | *No. 33621 |
| Banded Lines | *No. 33608 | Sparkelite      | *No. 33622 |
| Lazy Swirls  | *No. 33609 | Reflections     | No. 33623  |
| Basket Weave | *No. 33610 | Rain Glass      | No. 33624  |
| Pin Feathers | No. 33611  | Foam Bubbles    | No. 33625  |
| Winter Frost | No. 33613  |                 |            |

**ColorWaves™**

Each ColorWave glass gobo is coated in one of five dichroic colors. There are four different styles—Waves, Ripple, Strands, Mosaic—and thus 20 different choices in the range. Recommended for use in moving lights with lamps up to 1200 watts and in ellipsoidal fixtures up to 600watts. Requires the use of the Universal Iris Slot Holder.



\*No. 43104

**ColorWave B size \$79.50**

**ColorWave Moving Light size \$57.25**

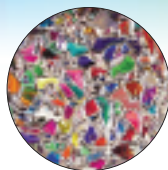
**Colorwave X-size (for use in Rosco's X24) \$99.95**

*Designs marked with an asterisk (\*) are available in X size*

- |                   |            |                      |           |
|-------------------|------------|----------------------|-----------|
| Waves - Red       | No. 33001  | Mosaic - Red         | No. 33301 |
| Waves - Amber     | *No. 33002 | Mosaic - Amber       | No. 33302 |
| Waves - Magenta   | *No. 33003 | Mosaic - Magenta     | No. 33303 |
| Waves - Cyan      | *No. 33004 | Mosaic - Cyan        | No. 33304 |
| Waves - Indigo    | *No. 33005 | Mosaic - Indigo      | No. 33305 |
| Ripple - Red      | *No. 33101 | Sparkelite - Red     | No. 33401 |
| Ripple - Amber    | *No. 33102 | Sparkelite - Amber   | No. 33402 |
| Ripple - Magenta  | *No. 33103 | Sparkelite - Magenta | No. 33403 |
| Ripple - Cyan     | *No. 33104 | Sparkelite - Cyan    | No. 33404 |
| Ripple - Indigo   | *No. 33105 | Sparkelite - Indigo  | No. 33405 |
| Strands - Red     | *No. 33201 |                      |           |
| Strands - Amber   | *No. 33202 |                      |           |
| Strands - Magenta | *No. 33203 |                      |           |
| Strands - Cyan    | *No. 33204 |                      |           |
| Strands - Indigo  | *No. 33205 |                      |           |

**Prismatics™**

Recommended for use in moving lights with lamps up to 1200 watts and in ellipsoidal fixtures, lamps up to 600watts. Requires the use of the Universal Iris Slot Holder.



No. 43801

**Prismatic B size and moving light size \$65.00**

*Prismatics are not available for use in Rosco's X24.*

Kaleidoscope	No. 43801	Fiery Sun	No. 43806
Cool Lavender	No. 43802	Warm Contrast	No. 43807
Spring Greens	No. 43803	Patriotic	No. 43808
Sunset	No. 43804	Crystalline	No. 43809
Blue Water	No. 43805		

**Universal Iris Slot Holder**

Allows a glass gobo to be placed in the iris slot of fixture in front of the gate. Double sided to allow the use of two gobos, glass and/or steel, in the iris slot at the same time. Fits the ETC Source Four, Altman Shakespeare and other modern spotlights. For use with 86 mm standard "B" size glass gobos only.



**Universal Iris Slot Holder \$15.95**  
No. 250 15786 0000

**Glass Gobo Holders**

**Glass Channel Holder**  
**BG Size Glass Gobo Holder (79 mm) — Altman fixtures \$11.95**  
No. 250 14579 0000  
**Standard "B" Size Glass Gobo Holder (86 mm) — ETC S4 \$11.95**  
No. 250 14686 0000

**Steel Gobo Holders**

**Tab Holder**  
**"B" Size Tab Holder — Altman fixtures \$8.95**  
No. 250 12586 0000  
**Sandwich Holder**  
**"B" Size Sandwich Holder — Altman fixtures \$9.95**  
No. 250 13586 0000  
**"B" Size Sandwich Holder — ETC S4 \$9.95**  
No. 250 13686 0000  
**"A" Size Sandwich Holder — ETC S4 \$9.95**  
No. 250 13610 0000

**Rosco Donuts**

Reduce or eliminate the halation around projected gobos and thus sharpen the image.

**6.25" fits Source 4/Altman Shakespeare \$5.65**  
No. 250 16625 0000  
**7.5" Donut fits most 6" ellipsoidal reflector spotlights \$ 5.65**  
No. 250 16750 0000

**Gaffers Tape**

A premium quality cotton substrate, coated with heavy-duty vinyl. Rubber based adhesive has high tack with excellent adhesion but will not leave a sticky residue.



Rolls measure 48mm x 50m (1.9" x 54.6 yds.)

<b>Black</b>	<b>\$19.00</b>	No. 851 42221 4850
<b>Grey</b>	<b>19.00</b>	No. 851 42223 4850
<b>Red</b>	<b>19.00</b>	No. 851 42339 4850
<b>Yellow</b>	<b>19.00</b>	No. 851 42342 4850
<b>Blue</b>	<b>19.00</b>	No. 851 42340 4850
<b>Electric Blue</b>	<b>20.10</b>	No. 851 42338 4850
<b>Fluorescent Green</b>	<b>20.10</b>	No. 851 42346 4850
<b>White</b>	<b>19.00</b>	No. 851 42222 4850

**Spike Tape**

12mm cloth tape for marking location of actors and scenery on stage floors. 25m roll.

<b>Red</b>	<b>\$4.40</b>	No. 851 05210 1225
<b>Yellow</b>	<b>4.40</b>	No. 851 05220 1225
<b>Blue</b>	<b>4.40</b>	No. 851 05230 1225
<b>Green</b>	<b>4.40</b>	No. 851 05240 1225
<b>White</b>	<b>4.40</b>	No. 851 05250 1225

**Caution Tape**

48mm vinyl tape has alternating bands of bright yellow and black. It is perfect for marking backstage areas that are off-limits or dangerous. 16.5m roll.

<b>Black/Yellow</b>	<b>\$7.50</b>	No. 851 02288 4816
---------------------	---------------	--------------------

**Glow Tape**

Glow-in-the-dark tape ideal for marking low light areas. It glows to a yellow-green color that can remain illuminated for hours. 24mm wide.

<b>5m roll (16.35 ft.)</b>	<b>\$12.10</b>	No. 851 05000 2405
<b>10m roll (32.7 ft.)</b>	<b>\$23.10</b>	No. 851 05000 2410
<b>30m roll</b>	<b>\$69.30</b>	No. 851 05000 2430

**TecStretch™ Film**

TecStretch is an excellent solution to secure cable, rope or extension cords safely and without leaving a sticky residue. Like Shrinkwrap™ in tape form, this 80 gauge film secures a wide variety of materials. It has a 1:3 stretch ratio and will yield up to 600' of usable material. Roll size: 1" wide x 250' (76.2 m). Sold in sleeves of six rolls or cases of 72 rolls.

<b>TecStretch 6-Roll Sleeves</b>	<b>each sleeve \$20.00</b>
<b>Assorted</b> No. 851 06901 6250	<b>Black</b> No. 851 06902 6250
<b>White</b> No. 851 06903 6250	<b>Blue</b> No. 851 06904 6250
<b>Red</b> No. 851 06905 6250	<b>Green</b> No. 851 06906 6250
<b>Yellow</b> No. 851 06907 6250	

<b>TecStretch 72-Roll Cases</b>	<b>each case \$234.00</b>
<b>Assorted</b> No. 851 06901 0BOX	<b>Black</b> No. 851 06902 0BOX
<b>White</b> No. 851 06903 0BOX	<b>Blue</b> No. 851 06904 0BOX
<b>Red</b> No. 851 06905 0BOX	<b>Green</b> No. 851 06906 0BOX
<b>Yellow</b> No. 851 06907 0BOX	



Chautauqua Theatre Company (July 2007), "The Just" by Albert Camus  
Directed by Ethan McSweeney, Lighting Design by Scott Zielinski

Rosco's projection screens can be used for front or rear projection, digital or analog imaging, close up or long throw installations. Available in 55" or 86" wide rolls or in custom finished sizes.

Colors and recommended uses:

**Front White:** Bright white surface for front projection use.

**Twin White:** Suitable for front or rear projection, or as a cyclorama.

**Grey:** Recommended for rear projection.

**Black:** Recommended for rear projection and high ambient light situations.

**Light Translucent:** Virtually clear, suitable for daytime, exterior rear projections or in exceptionally bright ambient light conditions.

## ■ 55" Seamless Screen

55" (139.7 cm) wide. Minimum order is one linear yard.

	Price/Yard
<b>Grey</b>	<b>\$18.30</b>
No. 500 02105 55	
<b>Twin White</b>	<b>18.30</b>
No. 500 02106 55	
<b>Black</b>	<b>18.30</b>
No. 500 02107 55	
<b>Light Translucent</b>	<b>18.30</b>
No. 500 02108 55	
<b>Front White</b>	<b>18.30</b>
No. 500 02109 55	

## ■ 86" Seamless Screen

Minimum order is one linear yard.

	Price/Yard
<b>Grey</b>	<b>\$85.00</b>
No. 500 02105 86	
<b>Twin White</b>	<b>85.00</b>
No. 500 02106 86	
<b>Front White</b>	<b>85.00</b>
No. 500 02109 86	

## ■ Custom Screen

Rosco will fabricate a custom screen to your precise specifications for size, shape, and finishing details. Standard pricing includes grommets on 12" centers, vertical seams, finished edges and a pipe pocket and skirt. Irregular shapes can be made but may require additional set-up charges. Delivery in as little as two weeks. All Rosco screens are flame-retardant and washable. Dimensions to outside edge of screen, rounded up to the foot. Minimum order: 100 square feet.

<b>Finished Screen</b>	<b>55" panels</b>	<b>\$4.95/sq. ft.</b>
	<b>86" panels</b>	<b>5.40/sq. ft.</b>
<b>Unfinished Screen (raw edges)</b>	<b>55" panels</b>	<b>4.50/sq. ft.</b>
	<b>86" panels</b>	<b>4.95/sq. ft.</b>

## ■ 110" Screen

Double width continuous rolls of two 55" sections welded together. Minimum order is two linear yards.

	Price/Yard
<b>Grey</b>	<b>\$102.75</b>
No. 500 02105 10	
<b>Twin White</b>	<b>102.75</b>
No. 500 02106 10	
<b>Black</b>	<b>102.75</b>
No. 500 02107 10	
<b>Light Translucent</b>	<b>102.75</b>
No. 500 02108 10	
<b>Front White</b>	<b>102.75</b>
No. 500 02109 10	

## ■ Clear Vinyl

14 mil thick, 72" wide.

	Price/Yard
<b>Crystal Clear</b>	<b>\$32.10</b>
No. 500 02110	

Also available in orange, yellow, green and grey.

## ■ Stretch-N-Hook™

This versatile fastener is constructed of 5/32" (4mm) elastic cord with a sturdy molded hook. Overall length is 12". Minimum order: 12 units.

<b>Stretch-N-Hook</b>	<b>\$3.50/each</b>
No. 500 05100 0010	

## ■ Transparent Screen Tape

For temporarily seaming screen yardage together for a production, or for temporary repairs of screen material. Taped seams may spread within two months. 48 mm x 50 m.

<b>Transparent Screen Tape</b>	<b>\$6.40</b>
No. 851 05100 4850	

**Cinefoil**

Cinefoil is a matte black aluminum material used for masking light leaks and/or eliminating unwanted reflections. It can be quickly molded to form barndoors, flags and other configurations.



**Cinefoil 24" x 25'** \$33.95

No. 101 01001 2425

**Cinefoil 12" x 50'** \$33.95

No. 101 01001 1250

**Cinefoil 48" x 25'** \$80.00

No. 101 01001 4825

Cinefoil is also available in shorter lengths for still photographers, videographers and students. Called Photofoil it offers the same light control properties at an economical price.

**Matte Black Photofoil, 12" x 10'** \$9.95

No. 101 01001 1210

**Matte Black Photofoil, 24" x 10'** \$17.95

No. 101 01001 2410

**Butterflies and Overheads**

A number of Cinegel materials are available to fit the standard butterfly and overhead frames used in motion picture and television production. All materials are supplied edge-finished with binding and grommets on 24" centers and sewn hems, except for No. 3014 Hilite and No. 3029 Silent Frost. The latter two have an ultrasonic welded seam every 48".

<b>Silent Frost</b>	No. 3029
<b>Grid Cloth</b>	No. 3030
<b>Light Grid Cloth</b>	No. 3032
<b>¼ Grid Cloth</b>	No. 3034
<b>Silent Grid Cloth™</b>	No. 3060
<b>Silent Light Grid Cloth™</b>	No. 3062
<b>Silent ¼ Light Grid Cloth™</b>	No. 3064
<b>Hilite</b>	No. 3014
<b>Full Blue Grid Cloth</b>	No. 3071
<b>½ Blue Grid Cloth</b>	No. 3072
<b>Blue Grid Cloth</b>	No. 3073
<b>Full Straw Grid Cloth</b>	No. 3081
<b>½ Straw Grid Cloth</b>	No. 3082
<b>Straw Grid Cloth</b>	No. 3083
<b>Moonlight Grid Cloth</b>	No. 3090

**Prices for Butterfly and Overhead materials**

(except for No. 3014 Hilite)

<b>6' x 6'</b>	<b>\$164.25</b>	<b>8' x 8'</b>	<b>\$273.75</b>
<b>12' x 12'</b>	<b>\$438.00</b>	<b>20' x 20'</b>	<b>\$930.75</b>

**Hilite:**

No. 3014

<b>6' x 6'</b>	<b>\$219.00</b>	<b>8' x 8'</b>	<b>\$355.88</b>
<b>12' x 12'</b>	<b>\$520.25</b>	<b>20' x 20'</b>	<b>\$1040.25</b>

**Acrylic Panels**

Acrylic sheets for daylight correction or light intensity reduction. Minimum quantity of 5.

	<b>4'x8'</b>	<b>5'x8'</b>	
<b>Roscolex 85</b>	<b>\$225.00</b>	<b>\$325.00</b>	No. 3761
<b>Roscolex ½ CTO</b>	<b>225.00</b>	<b>325.00</b>	No. 3751
<b>Roscolex N.3</b>	<b>225.00</b>	<b>325.00</b>	No. 3762
<b>Roscolex N.6</b>	<b>225.00</b>	<b>325.00</b>	No. 3763
<b>Roscolex N.9</b>	<b>225.00</b>	<b>325.00</b>	No. 3764

**Roscopak™**

Roscopak material is light in weight, yet strong and durable. The material can be taped or tacked to virtually any wall, ceiling or panel to turn that area into an efficient reflector. Roscopak measures 4' x 4½' (1.2 x 1.4 m), and is packaged in a handy pocket size pouch.

**Roscopak S/G (silver/gold)** \$27.40

No. 08509 4854

**Reflection Media**

Used for surfacing reflector boards or wherever reflected light is required. The product designation generally indicates the quality of the reflection. Rolls are 48" x 25' (122 cm x 7.6 m).

**Roscoflex M (mirror)** \$169.75

No. 3801

**Roscoflex H (hard)** \$169.75

No. 3802

**Roscoflex S (soft)** \$169.75

No. 3803

**Roscoflex SS (supersoft)** \$169.75

No. 3804

**Roscoflex G (gold tinted)** \$169.75

No. 3805

**Spun Silver** \$169.75

No. 3830

**RoscoScrim**

(perforated silver/black) \$175.00

No. 3809

**Featherflex S/G**

(silver/gold) \$169.75

No. 3812

**Thin Mirror - S (60" x 20')** \$54.75

No. 3813

**Thin Mirror - G (60" x 20')** \$54.75

No. 3814

**Cinebounce - White/Black** \$169.75

No. 3840

**Polarizing Filters**

A neutral grey linear polarizing film used in front of lights to reduce the glare caused by smooth surfaces such as glass, water, paper and certain metallic objects. Should be placed at a slight distance from hot lights.

**Sheet: 17" x 20"** \$ 54.00

No. 07300 1720

**Roll: 17" x 10'** \$289.00

No. 07300 1710

**RoscoVIEW™**

RoscoView is a unique two-part window control system for film and television professionals. It consists of wide width polarizing filter installed on windows and a matching camera polarizing filter. Rotating the camera filter results in 100% control of exterior brightness as seen through the window.

P.O.A. See the demo video at

<http://www.rosco.com/us/video/roscoview.cfm>

**TruColor IR™**

In some digital video cameras the use of ND filters can excessively desaturate the color balance of the shot. Rosco's TruColor IR camera filter restores the proper color saturation by balancing the visible and infrared light, allowing the camera sensors to properly render color in the finished composition.

**TruColor IR Filter - 4" x 4"** \$199.00

No. 120 48010 0404

**TruColor IR Filter - 4" x 5.65"** \$225.00

No. 120 48010 4565

**TruColor IR Filter - 5.65" x 5.65"** \$275.00

No. 120 48010 5656

**TruColor IR Filter - 6.6" x 6.6"** \$325.00

No. 120 48010 6666



■ **TV Paint™**

Specifically formulated for the sensitive contrast requirements of standard television systems, this versatile acrylic paint can be applied to nearly any surface and comes ready to use right out of the bucket.

**TV White** – A neutral grey that meets the specifications for 60% reflectance (maximum brightness intended for transmission).

**Gallon \$47.25**  
No. 150 05735 0128

**TV Black** – A rich, matte black that meets the specifications for 3% reflectance (minimum brightness intended for transmission).

**Gallon \$47.25**  
No. 150 05740 0128

■ **Keying Paints**

**Video Paint Ultimatte™**

Designed with the Ultimatte® technical staff to meet the requirements of their keying effects systems.

	Gal	5 Gal
<b>Ultimatte® Blue</b>	<b>\$78.90</b>	<b>\$362.25</b>

No. 150 05720

<b>Ultimatte® Green</b>	<b>118.35</b>	<b>532.05</b>
-------------------------	---------------	---------------

No. 150 05721

<b>Ultimatte® Super Blue</b>	<b>86.25</b>	<b>378.90</b>
------------------------------	--------------	---------------

No. 150 05722

For One Gallon add 0128 to product number.

For Five Gallon, add 0640 to product number.

**Chroma Key™**

Specifically formulated to provide high luminance values and color saturation for keying effects. The acrylic colors provide high build, one-coat coverage for use on nearly any surface.

	Gal.	5 Gal.
<b>Chroma Key Blue</b>	<b>\$78.90</b>	<b>\$362.25</b>

No. 150 05710

<b>Chroma Key Green</b>	<b>78.90</b>	<b>362.25</b>
-------------------------	--------------	---------------

No. 150 05711

For One Gallon add 0128 to product number.

For Five Gallon add 0640 to product number.

■ **Chroma Floor**

Chroma Floor is a lightweight reversible vinyl floor, Chroma Key Green on one side and Chroma Key Blue on the other.

Width: 63" x 131.3' (1.6 m x 40 m)

Thickness: 0.05" (1.3 mm)

Weight: 250 lbs. per roll

**Blue/Green Chroma Floor \$1495.00**

No. 300 08726 6300

■ **DigiComp™ Materials**

DigiComp is Rosco's trade name for paint and cable precisely crafted to allow seamless compositing for film, video and digital use. In the modern compositing or matting process

■ **DigiComp® Paint**

**DigiComp Blue**

**One Gallon \$94.05**

No. 150 05705 0128

**Five Gallon \$423.30**

No. 150 05705 0640

**DigiComp Green**

**One Gallon \$123.75**

No. 150 05707 0128

**Five Gallon \$557.40**

No. 150 05707 0640

■ **DigiComp Cable**

3/32" (2.4 mm) DigiComp cable

1/16" (1.6 mm) 7x7, coated diameter 3/32" (2.4 mm)

480 lb. (217 kg) rating, 500' (152 m) spool

**DigiComp Green Cable \$235.00**

No. 850 57075 0938

**DigiComp Blue Cable \$235.00**

No. 850 57055 0938

3/16" (4.8 mm) DigiComp cable

1/8" (3.2 mm) 7x19, coated diameter 3/16" (4.8 mm)

2000 lb. (917 kg) rating, 500' (152 m) spool

**DigiComp Green Cable \$400.00**

No. 850 57075 1875

**DigiComp Blue Cable \$400.00**

No. 850 57055 1875

1/4" (6.4 mm) DigiComp cable

3/16" (4.8 mm) 7x19, coated diameter 1/4" (6.4 mm)

4200 lb. (1905 kg) rating, 500' (152 m) spool

**DigiComp Green Cable \$450.00**

No. 850 57075 2500

**DigiComp Blue Cable \$450.00**

No. 850 57055 2500

■ **DigiStretch Fabric**

DigiStretch Fabric is specifically woven and engineered for superior performance as a compositing background. It has been matched to Rosco's Digital Blue and Digital Green color standards and can be used in conjunction with all Rosco compositing materials.

**DigiStretch Fabric Blue - 60" x 210' bolt \$1025.00**

No. 476 05705 6000

**DigiStretch Fabric Blue - 60" x 30' roll \$150.00**

No. 476 05705 6030

**DigiStretch Fabric Green - 60" x 210' bolt \$1025.00**

No. 476 05707 6000

**DigiStretch Fabric Green - 60" x 30' roll \$150.00**

No. 476 05707 6030

**Off Broadway™**

A vinyl acrylic paint which may be used on a wide variety of scenic materials including hard scenery, foam scenery, drops and ground cloths.



	5 Gallon	Gallon	
White	\$154.65	\$33.60	No. 150 05350
White White	181.50	40.35	No. 150 05351
Black	168.00	37.65	No. 150 05352
Yellow Ochre		37.65	No. 150 05353
Burnt Umber		37.65	No. 150 05354
Raw Sienna		37.65	No. 150 05355
Burnt Sienna		37.65	No. 150 05356
Raw Umber		37.65	No. 150 05357
Earth Umber		37.65	No. 150 05358
Ultramarine Blue		53.70	No. 150 05359
Fire Red		61.05	No. 150 05360
Deep Red		60.60	No. 150 05361
Orange		47.25	No. 150 05363
Emerald Green		47.25	No. 150 05364
Chrome Oxide Green		47.25	No. 150 05365
Lemon Yellow		47.25	No. 150 05366
Golden Yellow		47.25	No. 150 05367
Purple		60.60	No. 150 05368
Magenta		60.60	No. 150 05369
Pthalo Green		47.25	No. 150 05371
Sky Blue		47.25	No. 150 05372
Pthalo Blue		47.25	No. 150 05373
Imperial Green		64.05	No. 150 05374
Navy		60.60	No. 150 05375
Brilliant Red		64.05	No. 150 05376
Van Dyke Brown		47.25	No. 150 05380
Paynes Grey		64.05	No. 150 05382

Product numbers refer to color only. Add 0640 to the product number for Five Gallons, 0128 for One Gallon, 0032 for One Quart and 0016 for One Pint.

**Metallic Colors**

	Gallon	Quart	Pint	
Bright Gold	\$96.75	\$33.60	\$21.60	No. 150 05383
Gold	96.75	33.60	21.60	No. 150 05384
Silver	96.75	33.60	21.60	No. 150 05385
Copper	96.75	33.60	21.60	No. 150 05386
Antique Gold	96.75	33.60	21.60	No. 150 05387

Approximate Paint Weights:  
 Pint = 1.5 lbs./1 kilogram  
 Quart = 2.75 lbs./1.5 kilograms  
 Gallon = 11 lbs./5 kilograms  
 5 Gallon = 60 lbs./27 kilograms

**Iddings Deep Colors™**

Flexible casein binder with substantial quantities of ground pigment for rich, ultra-matte colors with excellent adhesion to absorbent materials.



	5 Gallon	Gallon	Quart	
White	\$212.40	\$47.25	\$16.20	No. 150 05551
Black	241.80	53.70	18.90	No. 150 05552
Yellow Ochre		53.70	18.90	No. 150 05553
Burnt Umber		53.70	18.90	No. 150 05554
Raw Sienna		53.70	18.90	No. 150 05555
Burnt Sienna		53.70	18.90	No. 150 05556
Raw Umber		53.70	18.90	No. 150 05557
Van Dyke Brown		53.70	18.90	No. 150 05558
Ultramarine Blue		67.35	24.30	No. 150 05559
Red		67.35	24.30	No. 150 05560
Dark Red		87.60	27.00	No. 150 05561
Bright Red		87.60	27.00	No. 150 05562
Orange		87.60	27.00	No. 150 05563
Emerald Green		67.35	24.30	No. 150 05564
Chrome Oxide Green		67.35	24.30	No. 150 05565
Lemon Yellow		87.60	27.00	No. 150 05566
Golden Yellow		87.60	27.00	No. 150 05567
Purple		87.60	27.00	No. 150 05568
Magenta		87.60	27.00	No. 150 05569
Turquoise Blue		67.35	24.30	No. 150 05570
Dark Green		67.35	24.30	No. 150 05571
Cerulean Blue		67.35	24.30	No. 150 05572
Navy Blue		67.35	24.30	No. 150 05573

Product numbers refer to color only. Add 0640 to the product number for Five Gallons, 0128 for One Gallon and 0032 for One Quart.

**Paint Sample Kits**

**Off Broadway Paint Kit \$71.70**

No. 150 05300 OKIT  
 23-piece kit contains one ounce samples of each Off Broadway color plus Clear Flat and Clear Gloss.

**Deep Colors Paint Kit \$73.35**

No. 150 05500 OKIT  
 24-piece kit contains one ounce samples.

**Supersaturated Paint Kit \$71.70**

No. 150 05900 OKIT  
 28-piece kit contains one ounce samples (neutral base not included).

**Fluorescent Paint Kit \$49.05**

No. 150 05700 OKIT  
 9-piece kit contains one ounce samples.

**ColorCoat Test Kit \$71.70**

No. 150 05600 OKIT  
 14-piece kit contains one ounce samples of each color.

**VividFX Sample Kit \$60.90**

No. 150 06200 OKIT  
 13-piece kit contains one ounce samples.

**ClearColour Test Kit \$47.70**

No. 150 06600 OKIT  
 5-piece kit contains one ounce samples.

## ■ Supersaturated Roscopaint™

Brilliant dye-like colors formulated to be diluted with substantial quantities of water while retaining binder strength. Flexible vinyl acrylic binder. Adheres to most scenic surfaces, including muslin, plastics and metal.



	Quart	
Red	\$36.30	No. 150 05965
Green Shade Blue	36.30	No. 150 05968
Ultramarine Blue	36.30	No. 150 05969
Chrome Green	36.30	No. 150 05971
Emerald Green	36.30	No. 150 05972
Pthalo Green	36.30	No. 150 05973
Imperial Green	36.30	No. 150 05974
Magenta	36.30	No. 150 05975
Brilliant Red	39.90	No. 150 05976
Spectrum Red	36.30	No. 150 05977
Purple	36.30	No. 150 05979
Iron Red	24.30	No. 150 05980
Chrome Yellow	36.30	No. 150 05981
Yellow Ochre	24.30	No. 150 05982
Raw Sienna	24.30	No. 150 05983
Moly Orange	36.30	No. 150 05984
Burnt Umber	24.30	No. 150 05985
Raw Umber	24.30	No. 150 05986
Burnt Sienna	24.30	No. 150 05987
Lemon Yellow	36.30	No. 150 05988
Turquoise Blue	36.30	No. 150 05989
Prussian Blue	33.60	No. 150 05990
Navy Blue	33.60	No. 150 05991
Paynes Grey	36.30	No. 150 05992
Leather Lake	24.30	No. 150 05993
Grass Green	33.60	No. 150 05994
Cerulean Blue	33.60	No. 150 05996
Hunter Green	33.60	No. 150 05997
Van Dyke Brown	24.30	No. 150 05998

Product numbers refer to color only.  
Add 0032 to product number for One Quart.

## ■ Supersaturated Concentrated Bases™

	5 Gal.	Gal.	Qt.	
Neutral Base		\$40.35	N/A	No. 150 06001
White	\$212.55	45.90	N/A	No. 150 06002
Velour Black	254.10	57.90	\$20.25	No. 150 06003

Product numbers refer to color only.  
Add 0640 to the product number for Five Gallons,  
0128 for One Gallon, and 0032 for One Quart.

## ■ Acrylic Glazes

Designed to be diluted with water and applied as an overcoat to a painted surface. They can also be mixed with the paints for additional binder strength.

	5 Gallon	Gallon	
Clear Gloss	\$194.85	\$43.20	No. 150 05580
Clear Flat	194.85	43.20	No. 150 05581

Add 0640 to the product number for Five Gallons,  
0128 for One Gallon.

## ■ ColorCoat™

Fast drying water borne acrylic enamel. Good choice for decks and floors due to its high abrasion resistance.

	Gallon	Quart	
Clear	\$51.30	\$16.20	No. 150 05620
Clear Satin	51.30	16.20	No. 150 05621
Black	56.55	16.20	No. 150 05634
Flat Black	56.55	16.20	No. 150 05635
Aluminum	83.40	27.00	No. 150 05636

## ■ Tough Prime™



Rosco offers a unique water-based primer with adhesion properties that allow it to bond to the hard-to-prime scenic materials found in every scene shop. Tough

Prime covers just about any surface, including PVC pipe, aluminum, foams and concrete floors, as well as wood and foam core.

	5 Gallons	Gallon	
Tough Prime White	\$231.90	\$51.30	No. 150 06050
Tough Prime Black	231.90	51.30	No. 150 06055

Add 0032 to the product number for Quarts,  
0128 for One Gallon and 0640 for Five Gallons.

## ■ Fluorescent Paint

Vivid vinyl acrylic colors are brilliant in normal light and glow brightly when bathed in ultraviolet light. White fluoresces a light blue under black light. Invisible blue appears milky white under normal light but glows blue in ultraviolet.

	Gallon	Quart	Pint	
<b>White</b>	<b>\$110.10</b>	<b>\$36.30</b>	<b>\$24.30</b>	No. 150 05779
<b>Red</b>	<b>110.10</b>	<b>36.30</b>	<b>24.30</b>	No. 150 05780
<b>Orange</b>	<b>110.10</b>	<b>36.30</b>	<b>24.30</b>	No. 150 05781
<b>Yellow</b>	<b>110.10</b>	<b>36.30</b>	<b>24.30</b>	No. 150 05782
<b>Green</b>	<b>110.10</b>	<b>36.30</b>	<b>24.30</b>	No. 150 05783
<b>Blue</b>	<b>110.10</b>	<b>36.30</b>	<b>24.30</b>	No. 150 05784
<b>Invisible Blue</b>	<b>135.30</b>	<b>38.55</b>	<b>25.65</b>	No. 150 05785
<b>Pink</b>	<b>110.10</b>	<b>36.30</b>	<b>24.30</b>	No. 150 05786
<b>Gold</b>	<b>115.65</b>	<b>39.00</b>	<b>25.65</b>	No. 150 05787

## ■ ClearColour

Water-based product is absolutely invisible under normal light, yet glows brightly under ultraviolet light.

	Quart	Pint	Ounce	
<b>Yellow</b>	<b>\$147.75</b>	<b>\$103.65</b>	<b>\$8.50</b>	No. 150 6610
<b>Green</b>	<b>197.40</b>	<b>100.35</b>	<b>8.50</b>	No. 150 6620
<b>Red</b>	<b>210.45</b>	<b>107.70</b>	<b>8.50</b>	No. 150 6630
<b>Blue</b>	<b>145.05</b>	<b>76.95</b>	<b>6.50</b>	No. 150 6650
<b>Black</b>	<b>129.00</b>	<b>70.05</b>	<b>5.50</b>	No. 150 6660

Product numbers refer to color only. Add 0032 for One Quart and 0016 for One Pint.

## ■ Vivid FX™

The exceptional pigments in Vivid FX glow most brilliantly between 365-380 nanometers. This creates stunning black light effects and intermix cleanly to provide a wide array of intermediate fluorescent hues.

	Gallon	Quart	Pint	
<b>Bright White</b>	<b>\$178.80</b>	<b>\$60.60</b>	<b>\$33.60</b>	No. 150 06250
<b>Lemon Yellow</b>	<b>192.15</b>	<b>67.35</b>	<b>37.65</b>	No. 150 06251
<b>Orange Sunset</b>	<b>178.80</b>	<b>60.60</b>	<b>33.60</b>	No. 150 06252
<b>Orange</b>	<b>178.80</b>	<b>60.60</b>	<b>33.60</b>	No. 150 06253
<b>Scarlet Red</b>	<b>178.80</b>	<b>60.60</b>	<b>33.60</b>	No. 150 06254
<b>Hot Pink</b>	<b>178.80</b>	<b>60.60</b>	<b>33.60</b>	No. 150 06255
<b>Magenta</b>	<b>178.80</b>	<b>60.60</b>	<b>33.60</b>	No. 150 06256
<b>Violet</b>	<b>178.80</b>	<b>60.60</b>	<b>33.60</b>	No. 150 06257
<b>Deep Blue</b>	<b>178.80</b>	<b>60.60</b>	<b>33.60</b>	No. 150 06258
<b>Brilliant Blue</b>	<b>178.80</b>	<b>60.60</b>	<b>33.60</b>	No. 150 06259
<b>Aquamarine</b>	<b>178.80</b>	<b>60.60</b>	<b>33.60</b>	No. 150 06260
<b>Electric Green</b>	<b>178.80</b>	<b>60.60</b>	<b>33.60</b>	No. 150 06261
<b>Deep Green</b>	<b>178.80</b>	<b>60.60</b>	<b>33.60</b>	No. 150 06262

## ■ Roscoglo™

A phosphorescent water-based paint designed for use in total darkness for stage direction and visual orientation.

<b>Ounce</b>	<b>\$ 7.20</b>	No. 150 05666 0001
<b>Pint</b>	<b>80.70</b>	No. 150 05666 0016

## ■ Colorine™

Designed for coloring a wide range of low wattage bulbs used in stagecraft and live entertainment. **\$28.20/pint**

<b>Cardinal Red (26)</b>	No. 150 07601
<b>Ruby Red (27)</b>	No. 150 07602
<b>Magenta (49)</b>	No. 150 07603
<b>Moonlight Blue (80)</b>	No. 150 07604
<b>Urban Blue (82)</b>	No. 150 07605
<b>Emerald Green (90)</b>	No. 150 07607
<b>Golden Amber (41)</b>	No. 150 07610
<b>Canary Yellow (15)</b>	No. 150 07615
<b>Clear</b>	No. 150 07617
<b>Thinner Pint \$22.80</b>	No. 150 07680

*Colorine requires special packaging to meet DOT regulations. This product can only be shipped via UPS, with additional fees.*

## ■ Rosco Lay-In Brushes

Rosco Lay-In brushes are available in ferrule widths of 4", 5", 6" and 7". Hog hair bristles are 3½" long, longer than most commercial brushes. Handles are 5½" high quality hardwood.



<b>4" Lay-In Brush</b>	<b>\$45.24</b>	No. 155 05630 0400
<b>5" Lay-In Brush</b>	<b>49.60</b>	No. 155 05630 0500
<b>6" Lay In Brush</b>	<b>56.14</b>	No. 155 05630 0600
<b>7" Lay-In Brush</b>	<b>63.77</b>	No. 155 05630 0700

## ■ Rosco Fitch Brushes

Rosco's professional quality scenic fitches, often called lining brushes, are available individually and in two handy kits. All brushes feature seamless ferrules and natural bristles.

Brush No. 155 05610 (add number in parentheses for each size)

<b>¼" Fitch</b>	(0025)	<b>\$ 6.06</b>
<b>½" Fitch</b>	(0050)	<b>7.58</b>
<b>¾" Fitch</b>	(0075)	<b>11.84</b>
<b>1" Fitch</b>	(0100)	<b>16.30</b>
<b>1¼" Fitch</b>	(0125)	<b>21.28</b>
<b>1½" Fitch</b>	(0150)	<b>25.87</b>
<b>2" Fitch</b>	(0200)	<b>32.05</b>
<b>3" Fitch</b>	(0300)	<b>50.84</b>

**7 Brush Set \$101.92** No. 155 056107KIT  
Includes fitches whose ferrule widths are: ¼", ½", ¾", 1", 1¼", 1½" and 2"

**8 Brush Set \$138.23** No. 155 056108KIT  
Includes all the brushes in the 7 Brush Kit plus a 3" Fitch Foliage



■ **Premiere Clear**

Water-borne urethane coating suitable for sealing and protecting painted finishes, floors, and high-traffic surfaces.



	Gallon	Quart	
<b>Premiere Clear Flat</b>	<b>\$59.70</b>	<b>\$19.65</b>	No. 150 06830
<b>Premiere Clear Satin</b>	<b>59.70</b>	<b>19.65</b>	No. 150 06820
<b>Premiere Clear Gloss</b>	<b>59.70</b>	<b>19.65</b>	No. 150 06810

■ **CrystalGel™**

Rosco CrystalGel is a non-toxic, water-based material which provides a clear, plastic-like coating on virtually any surface used in modern stagecraft.



**CrystalGel Gallon \$58.65**  
No. 150 07400 0128  
**CrystalGel 5 Gallon \$263.55**  
No. 150 07400 0640

■ **Foamcoat™**

Water-based, flame retardant, protective coating for all rigid foams. Foamcoat dries to a super hard durable coating that resists chipping and cracking.



**Foamcoat Gallon \$58.65**  
No. 150 07100 0128  
**Foamcoat 3½ Gallons \$195.75**  
No. 150 07100 0448

■ **Flexcoat™**

Flexible, non-toxic, water-based coating for polyurethane and polystyrene foam. It contains no plasticizers, so it will not become brittle with age or exterior exposure.



**Flexcoat Gallon \$58.65**  
No. 150 07120 0128  
**Flexcoat 5 Gallon \$263.55**  
No. 150 07120 0640

■ **FlexBond™**

Clear, flexible scenic glue which bonds many porous and non-porous scenic materials. Rosco FlexBond dries to a clear, hard, yet pliable coating that does not suffer from the "tackiness" common in many other flexible glues.



**FlexBond Gallon Jug \$40.20**  
No. 150 07500 0128  
**FlexBond 5 Gallon Pail \$180.15**  
No. 150 07500 0640

■ **Rosco Flamex NF/Natural Fiber Flame Retardant**

Should be used on fabrics like cotton, linen, wool, burlap and most other materials made of natural fibers. Premixed for use straight out of the bottle, NF is perfect for treating backdrops, velours, muslin cycloramas and decorative fabric panels.

**Flamex NF Gallon \$38.25**  
No. 150 079NF 0128

■ **Rosco Flamex SF/Synthetic Fiber Flame Retardant**

Effectively treats many synthetic fibers, such as polyesters, nylons, acrylics and rayons, as well as most cotton/synthetic blends. Premixed for use straight out of the bottle.

**Flamex SF Gallon \$60.00**  
No. 150 079SF 0128

■ **Rosco Flamex DF/Delicate Fabrics Flame Retardant**

Use for synthetic weaves, rayon or silk. Premixed for use straight out of the bottle, DF maintains the gentleness and soft hand of fragile fabrics and draperies.

**Flamex DF Gallon \$60.00**  
No.150 079DF 0128

■ **Rosco Flamex PC/Paper and Cardboard Flame Retardant**

Effectively treats papers and un-waxed cardboard materials. Premixed for use straight out of the bottle, PC is perfect for props and set pieces made from flammable paper products.

**Flamex PC Gallon \$60.00**  
No. 150 079PC 0128

■ **Rosco Flamex WD/Raw Wood Penetrating Flame Retardant**

WD is intended for untreated wood, plywood, cellulose board, acoustical board and corrugated paper.

**Flamex WD Gallon \$60.00**  
No. 150 079WD 0128

■ **Rosco Flamex PA/Latex Paint Additive Flame Retardant**

PA can be added to most latex or water based paints in order to create a flame retardant paint film. PA is useful for treating scenic materials that cannot easily be treated by other methods and for supplying the additional protection of a fire retardant paint coating.

**Flamex PA 8-oz jar \$14.25**  
No. 150 079PA 0008  
**Flamex PA Case of 12 jars \$157.05**  
No. 150 079PA 1208

## ■ Delta 3000™

Produces greater fog output than any machine in its price class. DMX is standard equipment and is available with a choice of two remote control devices.



- Delta 3000 Base Unit CE 240v** \$995.00  
No. 200 13000 0241
- Delta Digital/DMX Remote Control Device** \$530.00  
No. 200 13000 DDMX
- Delta Analog/DMX Remote Control Device** \$330.00  
No. 200 13000 ADMX
- Delta 3000 Carrying Case** \$400.00  
No. 200 43000 0000
- 4 inch Hose Adapter** \$41.50  
No. 200 61690 0004
- Ducting Hose 4 inch x 25 feet** \$45.65  
No. 200 61695 0004

## ■ Delta 6000™

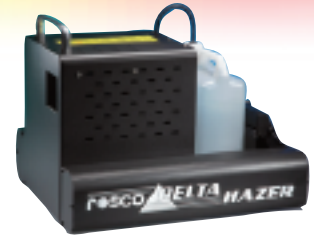
Rosco's most powerful fog machine, consuming more than nine liters of fog fluid per hour. Uses the same basic electronics as the Delta 3000, including DMX as standard equipment.



- Delta 6000 120v Base Unit (requires remote control)** \$1,997.50  
No. 200 16000 0120
- Delta 6000 240v Base Unit (requires remote control)** \$2075.00  
No. 200 16000 0240
- Delta Digital/DMX Remote Control** \$530.00  
No. 200 13000 DDMX
- Delta Analog/DMX Remote Control** \$330.00  
No. 200 13000 ADMX
- Delta 6000 Carrying Case** \$595.00  
No. 200 46000 0000

## ■ Delta Hazer™

Using water-based fluid, this machine incorporates features found in other dependable Rosco machines. These include on-board DMX, low fluid sensors, digital timers and control.



- Delta Hazer Base Unit 120V** \$1,425.00  
200 14000 0120
- Delta Hazer Base Unit 240v** \$1,425.00  
200 14000 0240
- Delta Digital/DMX Remote** \$530.00  
200 13000 DDMX
- Delta Analog/DMX Remote** \$330.00  
200 13000 ADMX
- Delta Hazer Touring Case** \$499.00  
200 4400 0000

## ■ Model 1700™

The Rosco Model 1700 fog machine is a high quality machine—durable, dependable, and with a lower cost. The machine delivers fog output more than previous fog machines, but draws less power—1190W.



- Model 1700 120v with remote** \$825.00  
No. 200 21700 0120
- Model 1700 240v with remote** \$860.00  
No. 200 21700 0240
- 1700/1900 DMX Remote** \$235.00  
No. 200 51700 RDMX
- 50' remote extension—1700/1900** \$67.50  
No. 200 51587 0050
- 100' remote extension—1700/1900** \$89.90  
No. 200 51588 0100
- Model 1700 Carrying Case** \$450.00  
No. 200 41700 0000

## ■ Model 1900™

Rosco's Model 1900 fog machine is a very high output professional fog machine, designed primarily for industrial applications. Its most unique feature is the extremely high output, almost twice as much as the Model 1700.



- Model 1900 120v with remote** \$950.00  
No. 200 21900 0120
- Model 1900 240v with remote** \$995.00  
No. 200 21900 0240
- RDMX 1700/1900 DMX Remote** \$235.00  
No. 200 51700 RDMX
- 50' remote extension—1700/1900** \$67.50  
No. 200 51587 0050
- 100' remote extension—1700/1900** \$89.90  
No. 200 51588 0100
- Model 1900 Carrying Case** \$475.00  
No. 200 41900 0000

## Alpha 900™

Rosco's most economical fog machine is an excellent choice for applications where the effect does not need volume control. A simple on-off switch, in the remote control only, initiates a remarkably powerful stream of fog.



**Alpha 900 – 120v \$495.00**

No. 200 20900 0120

**Alpha 900 – 240v \$505.00**

No. 200 20900 0240

**Alpha 900 Carrying Case \$395.00**

No. 200 40900 0000

**Alpha 900 30' Remote Extension Cable \$32.00**

No. 200 50978 0030

**4" Hose Adapter \$41.50**

No. 200 61690 0004

**Ducting Hose 4" x 25' \$45.65**

No. 200 61695 0004

## Coldflow™

Converts liquid carbon dioxide to dry ice to chill an aluminum chamber. The output of a fog machine passes through the aluminum chamber and is chilled so that it lays close to the ground. For best effect use Rosco Stage & Studio Fluid.



**Coldflow – 120v \$1,695.00**

No. 200 61700 0120

**Coldflow – 240v \$1,745.00**

No. 200 61700 0240



*Rosco has been honored by the Academy of Motion Picture Arts and Sciences® four times. One of the Oscars (in this case a Scientific and Technical Award) was for "the development of a safe, non-toxic fluid for use in motion pictures."*



## Rosco Fog Fluid

Rosco Fog Fluid, for over 30 years is the most widely used fog fluid in theatre, live entertainment and theme parks. When vaporized, this water-based formulation produces a dense, realistic fog with a long hang time.

**Fog Fluid Liter \$16.95**

No. 200 08200 0034

**Fog Fluid 4 Liter Bottle \$59.95**

No. 200 08200 0135

## Stage and Studio Fog Fluid

A water-based fluid which creates dense fog that will dissipate more quickly than standard fluid. Also recommended for use with the Rosco Coldflow to produce low-lying fog.

**Stage and Studio Fog Fluid Liter \$16.95**

No. 200 09000 0034

**Stage and Studio Fog Fluid 4 Liter Bottle \$59.95**

No. 200 09000 0135

## Rosco Clear Fog Fluid

Produces dense fog with a long hang time without the traditional Rosco scent.

**Clear Fog Fluid Liter \$16.95**

No. 200 08600 0034

**Clear Fog Fluid 4 Liter Bottle 459.95**

No. 200 08600 0135

## Rosco Light Fog Fluid

A lighter, less dense fog.

**Light Fog Fluid Liter \$13.95**

No. 200 08500 0034

**Light Fog Fluid 4 Liter Bottle \$48.50**

No. 200 08500 0135

## Delta Haze Fluid

Rosco's Delta Haze Fluid is specially formulated to work with the Delta Hazer. Because it is water based, it leaves no oily residue.

**Delta Haze Fluid 4-Liter Bottle \$59.95**

No. 200 08425 0135

## ■ Floor Catalog

Rosco's floor products are organized in a multi-page catalog. Available as a printed document or as a download at [www.rosco.com](http://www.rosco.com)



## ■ Dance Floor

Rosco Dance Floor is lightweight (1.9 pounds per linear foot) and is reversible with black on one side and your choice of white or grey on the other. Floor thickness is .05" (1.3 mm), width is 63" and it is sold by the linear foot or full rolls 131.25 feet long.

- Black/Grey 63" x linear foot \$12.75**  
No. 300 58720 63XX
- Black/Grey 63" x 131.25 feet \$1,528.00/roll**  
No. 300 58720 6300
- Black/White 63" x linear foot \$12.75**  
No. 300 58723 63XX
- Black/White 63" x 131.25 feet \$1,528.00/roll**  
No. 300 58723 6300
- Blue/Green Chroma Floor 63" x 131.25 feet \$1,495.00/roll**  
No. 300 58726 6300



## ■ Adagio™

Adagio's durable surface can handle tap and other hard shoe dance styles, yet it is supple enough for ballet and modern dance styles. Since Adagio is dimensionally stable, it is suitable for permanent or semi-permanent installation. 2.5 lbs. per linear foot/250 lbs. per roll. Floor thickness is .06", width is 63", and it is sold by the linear foot or full rolls 101.7 feet long.

- Black 63" x linear foot \$17.25**  
No. 300 58922 63XX
- Black 63" x 101.7 feet \$1,595.00/roll**  
No. 300 58922 6300
- Grey 63" x linear foot \$17.25**  
No. 300 58935 63XX
- Grey 63" x 101.7 feet \$1,595.00/roll**  
No. 300 58935 6300

## ■ Adagio™ Tour

Adagio Tour lays flat quickly and provides the same versatile surface as Adagio. Adagio Tour weighs only 1.6 lbs. per linear foot so, as its name implies, it is excellent for touring dance companies. Floor thickness is .04", width is 63" and is sold by the linear foot or full rolls 101.71 feet long.

- Black 63" x linear foot \$13.00**  
No. 300 58622 63XX
- Black 63" x 101.71 feet \$1,206.00/roll**  
No. 300 58622 6300
- Grey 63" x linear foot \$13.00**  
No. 300 58635 63XX
- Grey 63" x 101.71 feet \$1,206.00/roll**  
No. 300 58635 6300

## ■ Arabesque™

Arabesque is, on a cost-per-square-foot basis, Rosco's most affordable multi-purpose floor. Arabesque is available with a marbled finish, adding both a note of elegance and the practical advantage of helping to hide scuff marks. Floor thickness is .78" (2 mm), width is 79". It can be specified by the linear foot or full rolls 65.6 feet.

- Marble Black 79" x linear foot \$18.50**  
No. 300 58222 79XX
- Marble Black 79" x 65.6 feet \$1,095.00/roll**  
No. 300 58222 7900
- Marble Grey 79" x linear foot \$18.50**  
No. 300 58235 79XX
- Marble Grey 79" x 65.6 feet \$1,095.00/roll**  
No. 300 58235 7900
- Marble Tan 79" x linear foot \$18.50**  
No. 300 58218 79XX
- Marble Tan 79" x 65.6 feet \$1,095.00/roll**  
No. 300 8218 7900



## ■ Studio Floor

An ultra matte, black vinyl floor for ballet, theatre, or any application where a light-absorbing surface is needed. Studio Floor is not appropriate for heavy traffic or other types of dance. Studio Floor is .08" thick and rolls measure 6 feet wide by 60 feet long, weighing 250 pounds. Sold by full roll only..

**Studio Floor Black Matte 6' x 60' \$1,525.00 per roll**  
No. 300 78035 7200

## ■ Performance Floor

A durable, all-purpose floor, best for permanent or semi-permanent installations in studios, multi-purpose rooms, stages and showrooms—anywhere traffic is heaviest. Available in black, white, light and dark grey. Performance Floor is .1" thick and rolls measure 6 feet wide by 60 feet long, and weigh 280 pounds. Sold by full roll only.

**Black 6' x 60' \$1,695.00**  
No. 300 73035 7200  
**White 6' x 60' \$1,695.00**  
No. 300 73030 7200  
**Light Grey 6' x 60' \$1,695.00**  
No. 300 73031 7200  
**Dark Grey 6' x 60' \$1,695.00**  
No. 300 73025 7200

## ■ Roscolem Floor

A hardwearing floor that provides an ideal surface for the heaviest traffic areas. It stands up to tap, Flamenco and Irish dance but will easily accommodate soft shoe styles as well. .1" thick, 78.7" wide and approximately 104.92 feet long. Weight is 4 lbs. per linear foot, 425 lbs. per roll. Sold by full roll only.

**Black 78.7" x 104.92' \$2,360.00/roll**  
No. 300 58122 7900  
**Grey 78.7" x 104.92' \$2,360.00/roll**  
No. 300 58135 7900

## ■ Show Floor

Super glossy floor for special events, commercials and fashion promotions. It is not recommended for heavy traffic or for permanent installation. Available in high gloss black, white and red. Show Floor is .08" thick, and each roll measures 6 feet wide by 60 feet long, weighing 275 pounds. Sold by full roll only.

**Black \$1,450.00/roll**  
No. 300 74035 7200  
**White \$1,450.00/roll**  
No. 300 74030 7200  
**Red \$1,450.00/roll**  
No. 300 74036 7200

## ■ Roscotiles

This rugged floor product is 3 foot by 3 foot squares, making it easy to pick up and put down. Designed for video production facilities, each 1/8" thick, 12 pound tile is designed to lie flat for temporary, as well as permanent installations. Available in White, Black and TV Grey.

**White \$44.50/tile**  
No. 300 08415 3636  
**Black \$44.50/tile**  
No. 300 08422 3636  
**TV Grey \$44.50/tile**  
No. 300 08435 3636

## ■ Rosco SubFloor

A modular sprung floor system designed for temporary or permanent installations. The system consists of 42" x 42" panels which lock into each other with the unique Wave-Lock™ design. Perimeter pieces, 4 3/8" wide, lock the entire floor together.

Semi-Permanent Studio System Components

**42" x 42" x 2" Panel \$149.00**  
No. 300 08000 4242  
**4 3/8" x 3'6" x 2" Perimeter \$110.00**  
No. 300 08010 0042  
**4 3/8" x 7' x 2" Perimeter \$139.00**  
No. 300 08010 0084  
**Outside Corner \$149.00**  
No. 300 08015 0000  
**Customizing Panels \$72.00**  
No. 300 08040 4242  
**Inside Corner \$149.00**  
No. 300 08016 0000  
**21" x 3'6" x 2" Ramp \$199.00**  
No. 300 08020 0000  
**21" Corner Transition Ramp \$575.00**  
No. 300 08021 0000



*Unique WaveLock™ design assures easy installation and safe, secure flooring.*

## ■ Floor Cleaners

Rosco offers different floor cleaning products, designed to meet every need. Cleaners available in liters, gallons or cases of liters or gallons.



### Rosco All Purpose Floor Cleaner

Designed for the routine, regular cleaning of all Rosco vinyl floors.

- 1 liter \$12.00**  
No. 300 09116 0034
- 1 gallon \$30.00**  
No. 300 09116 0128

### Rosco Heavy Duty Floor Cleaner

For stripping and deep cleaning of Rosco floors.

- 1 liter \$12.00**  
No. 300 09112 0034
- 1 gallon \$30.00**  
No. 300 09112 0128

### Granulated Floor Cleanser

Granulated, dissolvable chemical for cleaning all Rosco flooring surfaces.

- 2 lb. tub \$11.95**  
No. 300 08710 0002



## ■ Floortapes

For installing floors in temporary and semi-permanent situations.

- Black Vinyl tape 48 mm x 33 m \$13.00**  
No. 851 05014 4833
- White Vinyl tape 48 mm x 33 m \$13.00**  
No. 851 05015 4833
- Grey Vinyl tape 48 mm x 33 m \$13.00**  
No. 851 05016 4833
- Clear Vinyl tape 48 mm x 33 m \$13.00**  
No. 851 05013 4833
- Roscofloor Double Stick tape 48 mm x 25 m \$16.30**  
No. 851 08740 4825

## ■ Floor Adhesives

For permanent installations. Consult a professional flooring contractor before installation.

### Latex Adhesive No. 555

For most porous surfaces, including concrete which is above grade.

- 1 Gallon Pail (weighs 12 lbs.) \$55.00**  
No. 300 08500 0128
  - 3 Gallon Pail (weighs 31 lbs.) \$155.00**  
No. 300 08500 0384
- Coverage is approximately 200 sq. ft. per gallon.

### Epoxy Adhesive No. 300

For non-porous surfaces and concrete below grade.

- 1 Gallon Kit (weighs 15 lbs.) \$79.00**  
No. 300 08300 0128
- Coverage is approximately 110 sq. ft. per gallon.

### Roscoleum Adhesive

For use with Roscoleum floor only.

- 4 Gallons (weighs 55 lbs.) \$160.00**  
No. 300 08100 0512

## ■ Floor Welding Threads

Welding threads are available to aid in permanent seam sealing by professional contractors. Rosco has welding threads available for Adagio, Roscoleum, Arabesque, Performance Floor, and Studio Floor.

Floor Type	Roll Length	Price
<b>Adagio</b>	164 feet	<b>\$ 48.00</b>
<b>Roscoleum</b>	165 feet	<b>130.00</b>
<b>Performance Floor</b>	500 feet	<b>102.50</b>
<b>Arabesque</b>	410 feet	<b>92.00</b>
<b>Studio Floor</b>	500 feet	<b>122.00</b>

## ■ PortaBarre™

A truly portable ballet dance barre, Rosco's aluminum PortaBarre uses an internal double button interlocking system, making assembly and disassembly a matter of a few minutes, without requiring tools or locking keys. Sold complete with a custom designed carrying case.

- 9' barre with carrying case \$465.00**  
No. 300 09095 0108
- 4'6" barre with carrying case \$289.95**  
No. 300 09095 0054

## ■ Rosco Floor Bag

Designed specifically for dancers and dance companies who tour, the Rosco Floor Bag is made of durable water-resistant PVC fabric. A hook and loop fastener along the entire length of the bag keeps it securely shut while in transit, and also allows it to open flat for loading and unloading.

- Rosco Floor Bag \$150.00**  
No. 300 59000 6300

## Hinges and Pin Wire

Hinges are generally used as an aid in attaching scenery flats. Three types are available. Loose Pin Hinges with removable pins; Tight Pin Hinges with permanent pins. And the Sure Hinge. The Sure Hinge is a special type of loose pin hinge with interchangeable halves. It is scored so you can bend it around nominal 1" lumber.



Loose Pin Hinge



Tight Pin Hinge



Sure Hinge

**1.5" Loose Pin Hinge – Box of 12 hinges \$21.95**

No. 850 73100 0001

**1.5" Tight Pin Hinges – Box of 12 hinges \$21.95**

No. 850 73150 0001

**2" Loose Pin Hinge – Box of 12 hinges \$33.95**

No. 850 73200 0002

**2" Tight Pin Hinge – Box of 12 hinges \$33.95**

No. 850 73250 0002

**Sure Hinge – Box of 12 hinges \$29.95**

No. 850 73300 0000

**Pin Wire – One-pound bundle. \$14.35**

No. 850 73500 0000

Often used as an alternate pin in hinges and for other stage purposes.

## Sure Clamp™

The Sure Clamp has a grip range of 1½" to 2" and is used to hang lighting fixtures or scenery directly to pipes. An extra-secure substitute for the standard C-Clamp, it closes automatically when weight is hung on it and is further secured by a hand knob which requires no tools for adjustment.



**Sure Clamp \$48.95**

No. 850 78020 0000

## Wagon Brakes

Mounted to the side of a platform or scenery, this brake actually lifts the scenery off its casters, preventing the wagon from shifting under active actor movements. A unique lever action pushes down a plunger, lifting even very heavy pieces with only minimal force required from a stagehand. A minimum of two brakes per unit are recommended.



**Wagon Brake w/Extension Spindle (5/16" x 21/2")**

(300 lb. max.) \$19.95

No. 850 74510 0000

**Heavy Duty Wagon Brake (800 lb. max.) \$34.95**

No. 850 74550 0000

**Heavy Duty Extension Spindle (optional) \$3.75**

No. 850 74555 0000

## Sandbags

These sandbags, made in the U.S.A., are carefully rated for the weight of sand they will hold. They are made from strong canvas, reinforced with a sling, and equipped with a heavy metal hook and safety catch. Sand is not included.



No. 850 72610 Sandbag (add 4 digits for size)

<b>10 pound sandbag</b>	(0010)	<b>\$30.25</b>
<b>25 pound sandbag</b>	(0025)	<b>33.25</b>
<b>50 pound sandbag</b>	(0050)	<b>43.75</b>
<b>75 pound sandbag</b>	(0075)	<b>57.75</b>
<b>100 pound sandbag</b>	(0100)	<b>62.75</b>
<b>150 pound sandbag</b>	(0150)	<b>65.50</b>
<b>200 pound sandbag</b>	(0200)	<b>77.95</b>

## Belay Pins

**17" Wood Belay Pin \$12.00**

No. 850 71700 0017

Solid hickory wood, with an easy grip handle. 1½" diameter

**21" Wood Belay Pin \$13.50**

No. 850 71700 0021

Same as above but with 4" longer shaft and 1½" diameter

## Lashing and Bracing Hardware



72901  
Brace Hook



72902  
Brace Clamp Set



78200  
Rocker Heel



78231  
Non-Skid Eye



75420  
Scheel Brace Cleat

**Brace Hook \$26.25**

No. 850 72901 0000

This metal part is hooked onto the scenery flat through a Scheel Brace Cleat.

**Brace Clamp Set \$15.00**

No. 850 72902 0000

Used to adjust and secure the height of Stage Braces.

**Rocker Heel \$9.45**

No. 850 78200 0000

**Non-Skid Eye \$6.30**

No. 850 78231 0000

**Scheel Brace Cleat \$3.50**

No. 850 75420 0000

Used to fasten stage braces to scenery, but grooved to allow the stage brace hook to rest flat against the scenery.



## ■ Hanging and Attaching Hardware

### Ceiling Plate With Ring \$17.85

No. 850 76220 0000

Lines or cable are more easily attached with this device affixed to the ceiling of a box set. May also be used to hang relatively lightweight scenery.

### Top Hanger Iron \$6.95

No. 850 76310 0000

Affixed to the top of a scenery flat for hanging.

### Bottom Hanger Iron \$8.25

No. 850 76320 0000

Fits under the bottom member of a scenery flat. Usually secured parallel to the Top Hanging Iron.

### D-Ring Plate with Ring \$3.75

No. 850 76410 0000

The floor plate bolts to the stage floor and lines may be tied off through the D-ring.

## ■ Scaffold Clamps

Rosco's Scaffold Clamps are manufactured using high tensile strength aluminum extrusion. All bolts and wing nuts are zinc plated. Rosco Scaffold Clamps have a safe working load of 750Kg.

### Double Scaffold Clamp \$42.50

No. 850 81002 0000

## ■ Stage Screws

Stage screws are used to fasten flats or scenery pieces to the stage floor.



They go directly into the wood stage floor. The Steel Stage Screw should be used when the screw must be used in the same place several times, or where exceptional holding power is needed. To use the Steel Stage Screw, drill a 3/16" hole, screw the Stage Plug into the floor with a wide straight blade screwdriver, then fit the screw into the plug.

### Stage Screw \$6.95

No. 850 74200 0000

### Steel Stage Screw \$6.95

No. 850 74100 0000

3/8" diameter. Heavy steel w/ zinc plating.

### Stage Plug \$6.95

No. 850 74150 0000

Used with Steel Stage Screw, but sold separately. For 3/16" hole.

## ■ Flicker Candles™

A theatrical alternative to flame candles, these units look and act just like the real thing . . . right down to the dripped wax. Most importantly, they are powered electrically, so they don't present potential hazards of using live flames. A simple 9-volt AC Adaptor allows you to raise or lower the dimming level on the Flicker Candles.



### Professional Flicker Candle \$72.00

No. 854 09001 0017

1 7/8" long by 1 1/2" in diameter. Comes with 4 foot leads for remote installation to a power source.

### Self-Contained \$44.50

No. 854 08903 0009

Complete with a candle tip, a realistic stem with a dripping wax look, an on-off switch, and connection for a 9 volt battery, this 9 3/4" unit is for productions where the performers need to carry a candle from place to place or where the candle needs to be turned "on" or "off" during the show.

### Wired Stem \$35.75

No. 854 08902 0009

The Wired Stem Model is 9 3/4" and consists of the candle tip, candle stem and 4 foot leads for remote installation to a power source.

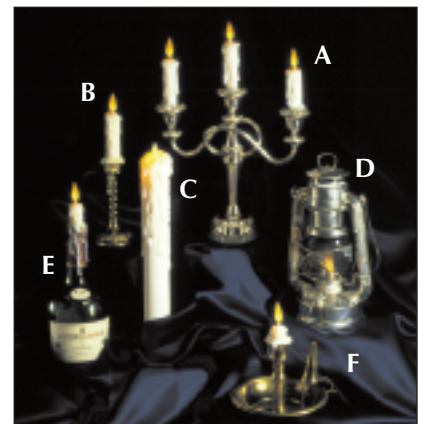
### Basic Module \$29.75

No. 854 08901 0004

The Basic Module is a 4" long unit with short pins for wiring to a power source and is ideal for building custom units.

## ■ Custom Candle Range

Rosco Flicker Candles can be custom built into many popular settings. Here are some examples of the bases and specialty settings available.



### A Three Arm Candelabra \$399.00

No. 854 09002 0000

### B Single Candlestick \$136.00

No. 854 09004 0000

### C Professional Flicker Candle \$72.00

No. 854 09001 0017

### D Classic Hurricane Lantern \$138.00

No. 854 09003 0000

### E Classic bottle with realistic dripping wax \$89.00

No. 854 09006 0000

### F Classic saucer holder \$92.00

No. 854 09005 0000

## ■ 20-Amp Dual Termination Connectors



Direct wire or lugged connections. All the necessary hardware for either style is included with each connector. Included strain relief inserts allow the connector to grip standard industry cables ranging from 12/3 stage cable to sleeved fixture leads.

### 20 amp male DTConnectors \$6.75

No. 12120

### 20 amp female DTConnectors \$6.75

No. 22120

Connector hardware is available in bulk packs for large shops or installation projects. The bulk pack contains hardware sufficient for 100 connectors packed by like type for binning on the assembly bench. Also available are 20-count packages of connectors. These are supplied with a set of hardware conveniently packed with each connector.

To order 20-count packages of male connectors, use Product Code 203 12120 2020; for 20-count packages of female connectors use Product Code 203 22120 2020.

### Color Covers

Connectors can be equipped with your choice of colored covers. Product numbers shown here are for 100 count boxes of covers.

#### Black

No. 203 00232 0100

#### Red

No. 203 00332 0100

#### Green

No. 203 00432 0100

#### Blue

No. 203 00532 0100

#### Yellow

No. 203 00632 0100

#### Clear

No. 203 00732 0100



### Personalized Connectors

20-amp DTConnectors can be personalized with a company or organization name or logo on the cover. Personalized covers can be supplied with new connector orders or as replacement covers for existing Rosco connectors.

### Connector engraving charge \$.20/cover

No. 22000

## ■ Auxiliary Strain Relief

A supplemental Strain Relief is available for the DT Connector when used with undersized cable. It will accept up to 16/3 Type S cable.

### Auxiliary Strain Relief \$.70

No. 80002

## ■ 60A Connectors

Rosco's 60 amp connectors are available in both panel mount and cable end configurations. UL-listed.

### 60A Male Plug \$25.55

No. 203 10126 6001

### 60A Female Receptacle \$28.45

No. 203 20126 6001

## ■ Adapters

Rosco Adapters are designed to quickly adapt Rosco 20A Connectors to the most common connections found: Twistlock and U-ground. Unibody construction and internally wired at the factory.

### 20A M Pin to 15A F U-ground \$42.00

No. 203 70005 2001

### 20A M Pin to 20A F Twistlock \$32.35

No. 203 70003 2001

### 20A F Pin to 15A M U-ground \$40.50

No. 203 70007 2001

### 20A F Pin to 20A M Twistlock \$31.75

No. 203 70004 2001

## ■ Panel Mount Connectors

Made of high heat resistant material, the Rosco Panel Mount Connector conforms to industry standards for compatibility and installation. UL-listed.

### 20A Male Panel Mount \$9.25

No. 203 50002 2001

### 60A Female Panel Mount \$27.25

No. 203 60006 6001

### 20A Female Panel Mount \$7.50

No. 203 60002 2001

### 60A Male Panel Mount \$25.75

No. 203 50006 6001

## ■ Wallhugger™

Rosco's Wallhugger is for situations where lighting fixtures equipped with 2 P&G connectors need to be powered from 15-amp wall receptacles. Includes an indicator lamp which illuminates when power is available to the device.

### Wallhugger \$23.99

No. 203 70008 2001



**Slit Drape**

This Rosco version of slash curtain consists of overlapping 1/8" strips of durable, flame retardant vinyl, 36" wide (91.44 cm). Add 4-digit number in parentheses to product number to indicate length desired.



<b>Solid Black</b>	8'	(0008)	<b>\$12.50</b>	No. 350 02610
	16'	(0016)	<b>26.50</b>	
	24'	(0024)	<b>53.00</b>	
<b>Solid Silver</b>	8'	(0008)	<b>12.50</b>	No. 350 02609
	16'	(0016)	<b>26.50</b>	
	24'	(0024)	<b>53.00</b>	
<b>Solid Gold</b>	8'	(0008)	<b>12.50</b>	No. 350 02625
	16'	(0016)	<b>26.50</b>	
	24'	(0024)	<b>53.00</b>	
<b>Black/Silver</b>	8'	(0008)	<b>14.95</b>	No. 350 02608
	16'	(0016)	<b>32.50</b>	
	24'	(0024)	<b>68.75</b>	
<b>Black/Gold</b>	8'	(0008)	<b>14.95</b>	No. 350 02602
	16'	(0016)	<b>32.50</b>	
	24'	(0024)	<b>68.75</b>	
<b>Black/Diffraction</b>	8'	(0008)	<b>14.95</b>	No. 350 02600
	16'	(0016)	<b>32.50</b>	
	24'	(0024)	<b>68.75</b>	
<b>White/Diffraction</b>	8'	(0008)	<b>14.95</b>	No. 350 02606
	16'	(0016)	<b>32.50</b>	
	24'	(0024)	<b>68.75</b>	
<b>Silver/Diffraction</b>	8'	(0008)	<b>14.95</b>	No. 350 02601
	16'	(0016)	<b>32.50</b>	
	24'	(0024)	<b>68.75</b>	
<b>Iridescent</b>	8'	(0008)	<b>14.95</b>	No. 350 02630
	16'	(0016)	<b>32.50</b>	
	24'	(0024)	<b>68.75</b>	
<b>Silver/Iridescent/Gold</b>	8'	(0008)	<b>14.95</b>	No. 350 02634
	16'	(0016)	<b>32.50</b>	
	24'	(0024)	<b>68.75</b>	
<b>Silver/Gold/Diffraction</b>	8'	(0008)	<b>14.95</b>	No. 350 02636
	16'	(0016)	<b>32.50</b>	
	24'	(0024)	<b>68.75</b>	

**Showcloth™**

A weave of thread and self extinguishing plastic strips produces an elegant, shimmering fabric with a soft hand and beautiful drape. Showcloth has a selvedge edge for easy sewing.

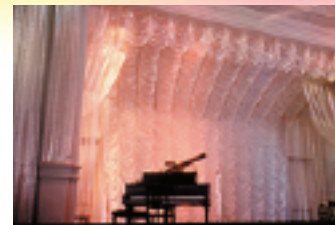
**Roll 47" x 30 ft. \$ 150.00**  
**Bolt 47" x 330 ft. \$1,650.00**

<b>White/Gold</b>	No. 352 62101
<b>Black/Gold</b>	No. 352 62102
<b>White/Silver</b>	No. 352 62103
<b>White/Iridescent</b>	No. 352 62104
<b>Black/Silver</b>	No. 352 62105
<b>Black/Black</b>	No. 352 62106
<b>Black/Iridescent</b>	No. 352 62107

Add 4730 to product number for 30 ft.roll.  
 Add 4701 to product number for 330 ft. bolt.

**Glamé™**

Glamé is woven from a durable, lightweight, self-extinguishing plastic film



48" x 30 ft. roll. 330 ft. bolts also available.

<b>Silver</b>	<b>\$ 89.25</b>	No. 353 52006
<b>Gold</b>	<b>89.25</b>	No. 353 52009
<b>Silver/Black</b>	<b>89.25</b>	No. 353 52012
<b>Gold/Black</b>	<b>89.25</b>	No. 353 52013
<b>Gold/Silver</b>	<b>89.25</b>	No. 353 52014
<b>Silver/Diffraction</b>	<b>99.00</b>	No. 353 52032
<b>Gold/Diffraction</b>	<b>99.00</b>	No. 353 52033
<b>Clear/Diffraction</b>	<b>99.00</b>	No. 353 52034
<b>Iridescent/Diffraction</b>	<b>99.00</b>	No. 353 52035
<b>Razzle Dazzle</b>	<b>118.00</b>	No. 353 52041
<b>Black</b>	<b>89.25</b>	No. 353 52045
<b>Black/Iridescent</b>	<b>99.00</b>	No. 353 52052
<b>Silver/Iridescent</b>	<b>119.00</b>	No. 353 52053
<b>Gold/Iridescent</b>	<b>119.00</b>	No. 353 52054

Add 4830 to product number for 30 ft. roll.  
 Add 4801 to product number for 330 ft. bolt.

**Shimmer Scrim™**

Shimmer Scrim is a combination of thread and plastic film woven into a theatrical fabric. This self-extinguishing fabric may be used for traditional scrim effects or as a shimmering, airy drape. It has a selvedge edge for easy sewing.

**Roll (47" x 30 ft.) \$ 150.00**  
**Bolt (47" x 330 ft.) 1,430.00**

<b>White/Iridescent/Gold</b>	No. 351 41001
<b>White/Clear/Iridescent</b>	No. 351 41005
<b>White/Iridescent/White</b>	No. 351 41011
<b>Black/Clear/Silver</b>	No. 351 42001
<b>Black/Clear/Iridescent</b>	No. 351 42005
<b>Black/Clear/Black</b>	No. 351 42011
<b>Black/Gold/Clear</b>	No. 351 42021

Add 4730 to product number for 30 ft. roll.  
 Add 4701 to product number for 330 ft. bolt.

**Glitter**

RoscoGlitter, in 1/4" hexagonal chips, is uniquely suited for production applications. The chips are brilliant under stage lights and can be sprinkled on or mixed directly into Clear Gloss or Flat Acrylic for easy application. Small is 4 oz., large is 16 oz. except where noted.

	Small / Large	
<b>Silver</b>	<b>\$8.00 / 25.00</b>	No. 360 02890
<b>Gold</b>	<b>10.10 / 34.00</b>	No. 360 02891
<b>Red</b>	<b>10.10 / 34.00</b>	No. 360 02893
<b>Sky Blue</b>	<b>10.10 / 34.00</b>	No. 360 02894
<b>Royal Blue</b>	<b>10.10 / 34.00</b>	No. 360 02895
<b>Green</b>	<b>10.10 / 34.00</b>	No. 360 02897
<b>Fuchsia</b>	<b>10.10 / 34.00</b>	No. 360 02898
<b>Pink Fizz</b>	<b>10.10 / 34.00</b>	No. 360 02902
<b>Blue/Green Iridescent</b>	<b>10.10 / 34.00</b>	No. 360 02904*

\*Note: small is 3 oz. and large is 12 oz.  
 Add 0004 to number for small; add 0016 for large.

**Breakaways**

Plastic breakaways shatter realistically and are specially packaged to assure that they are delivered intact. Bottles are shipped with labels unattached for easy customization. Minimum order: 6 breakaways. (Bottles must be the same color.)



	1/2 dozen		
<b>Beer Bottle - Amber</b>	<b>\$117.00</b>	No. 852 80011 0000	
<b>Beer Bottle - Green</b>	<b>117.00</b>	No. 852 80012 0000	
<b>Whiskey Bottle - Amber</b>	<b>130.00</b>	No. 852 80031 0000	
<b>Whiskey Bottle - Green</b>	<b>130.00</b>	No. 852 80032 0000	
<b>Wine Bottle - Amber</b>	<b>130.00</b>	No. 852 80051 0000	
<b>Wine Bottle - Green</b>	<b>130.00</b>	No. 852 80052 0000	

**Mirrors**

A variety of reflective surfaces in a metalized plastic format.

<b>Flexible Silver (48" x 30')</b>	<b>\$69.50</b>	No. 359 03906 4830
<b>Thin Silver (60" x 30')</b>	<b>40.75</b>	No. 359 03925 5530
<b>Thin Gold (60" x 30')</b>	<b>40.75</b>	No. 359 03927 5530
<b>Rigid Gold (51" x 30')</b>	<b>93.25</b>	No. 359 03930 5130
<b>Rigid Silver (51" x 30')</b>	<b>93.25</b>	No. 359 03931 5130

**Shrink Mirror™**

Rosco's Silver Shrink Mirror is a lightweight substitute for heavy glass mirror. This metalized plastic laminate is designed to be mounted to a frame and heat shrunk for superior reflectance. 54" x 30'



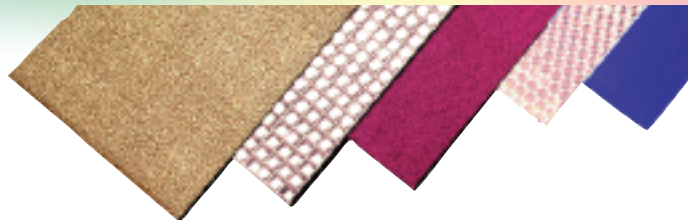
<b>Silver Shrink Mirror</b>	<b>\$136.75</b>	No. 359 03909 5430
-----------------------------	-----------------	--------------------

**Smooths™**

The smooth colors are pressure-sensitive for easy mounting.

24" x 30' rolls (61 cm x 9.2 m).

<b>Bright Orange</b>	<b>\$32.40</b>	No. 355 03974 2430
<b>Gun Metal Grey</b>	<b>32.40</b>	No. 355 03975 2430
<b>Cherry Red</b>	<b>32.40</b>	No. 355 03976 2430
<b>Royal Blue</b>	<b>32.40</b>	No. 355 03980 2430
<b>Silver</b>	<b>32.40</b>	No. 355 03981 2430
<b>Pink Fizz</b>	<b>32.40</b>	No. 355 03983 2430
<b>Light Gold</b>	<b>32.40</b>	No. 355 03985 2430
<b>Smooth Iridescent</b>	<b>86.40</b>	No. 355 03986 2430



**Metalix™**

This durable metalized plastic material is available in a variety of colors and surfaces.

<b>Metalix 48" x 30' roll</b>	<b>\$89.60</b>
-------------------------------	----------------

<b>Silver Pebble</b>	No. 356 03902 4830
<b>Soft Silver</b>	No. 356 03971 4830
<b>Gold Pebble</b>	No. 356 03972 4830

**Multi-Lens™**

A laser etched plastic film with the 3-D look of glass lenses. Pressure sensitive for easy mounting.

<b>Multi-Lens 24" x 15' rolls</b>	<b>\$49.50</b>
-----------------------------------	----------------

<b>1/2" Silver</b>	No. 357 04910 2415
<b>1/2" Gold</b>	No. 357 04915 2415
<b>2" Silver</b>	No. 357 04920 2415
<b>2" Gold</b>	No. 357 04925 2415

**Diffractions™**

Five laser etched plastic films for prismatic effects. All the diffractions are adhesive backed.

<b>Diffractions 24" x 15' rolls</b>	<b>\$46.50</b>
-------------------------------------	----------------

<b>Exotic Circles</b>	No. 358 02956 2415
<b>Exotic Hex</b>	No. 358 02957 2415
<b>1/4" Mosaic</b>	No. 358 02960 2415
<b>Horizontal Stripes</b>	No. 358 02962 2415

**Sparklene™**

Eleven glitter laminate plastic film colors.. Sparklene is pressure sensitive for easy mounting.

<b>Sparklene 24" x 15' rolls (61 cm x 4.6 m).</b>	<b>\$49.50</b>
---	----------------

<b>Silver</b>	No. 354 03990 2415
<b>Blue</b>	No. 354 03991 2415
<b>Red</b>	No. 354 03992 2415
<b>Green</b>	No. 354 03993 2415
<b>Fuchsia</b>	No. 354 03994 2415
<b>Gold</b>	No. 354 03995 2415
<b>Fluorescent Pink</b>	No. 354 03961 2415
<b>Blue/Green Iridescent</b>	No. 354 03964 2415

- A** Acrylic Panels .....16  
 Acrylic Glazes .....19  
 Adagio™ Floor .....24  
 Adagio™ Tour .....24  
 Adapters .....29  
 All Purpose Floor Cleaner .....26  
 Alpha 900 Fog Machine .....23  
 Arabesque .....24  
 Auxiliary Strain Relief .....29
- B** Belay Pins .....27  
 Belt Drive Rotators .....3  
 Black (light wrapping)  
 Foil .....16  
 Black Light Paints .....20  
 Bottom Hanger Iron .....28  
 Brace Clamp Set .....27  
 Brace Hook .....27  
 Breakaways .....31  
 Brushes .....20  
 Butterflies .....16
- C** Cable End Connectors .....29  
 CalColor Kit .....11  
 Candles .....28  
 Caution Tape .....14  
 Ceiling Plate With Ring .....28  
 Chroma Floor .....17  
 Chroma Key Paints .....17  
 ChromaSleeves .....12  
 Cinefoil .....16  
 Cinegel .....10  
 Cinegel Sampler Kit .....11  
 ClearColour .....20  
 ClearColour Test Kit .....18  
 Clear Flat Acrylic .....19  
 Clear Gloss Acrylic .....19  
 Coatings .....21  
 Coldflow .....23  
 ColorCoat .....19  
 ColorCoat Test Kit .....18  
 Color Correction Kit .....11  
 Color Effects Kit .....11  
 Colorine .....20  
 Colorizer Gobos .....13  
 ColorWaves .....13
- Connectors .....29  
 CrystalGel .....21  
 Custom Candle Range .....28  
 Custom iPro Slides .....9  
 Custom Screens .....15
- D** D-Ring Plate .....28  
 Dance Floor .....24  
 Deep Colors .....18  
 Deep Colors Paint Kit .....18  
 Delta 3000  
 Fog Machine .....22  
 Delta 6000  
 Fog Machine .....22  
 Delta Haze Fluid .....23  
 Delta Hazer .....22  
 DichroFilm .....10  
 Diffractions .....31  
 Diffusion Kit .....11  
 DigiComp™ .....17  
 DigiComp™ Cable .....17  
 DigiStretch Fabric .....17  
 DMC/DC Controller .....4  
 Donuts .....14  
 Double Gobo Rotator .....4  
 Dual Termination  
 Connectors .....29
- E** E-Colour .....10  
 Epoxy Adhesive No. 300 .....26  
 Extension Spindle .....27
- F** Fabric, Digital  
 Compositing .....17  
 Filmmaking Tools .....16-17  
 Finished Screens .....15  
 Fire Retardants .....21  
 Fitch Brushes .....20  
 Flamex .....21  
 FlexBond .....21  
 Flexcoat .....21  
 Flicker Candles .....28  
 Floor Adhesive .....26  
 Floor Bag .....26  
 Floor Care .....26  
 Floor Catalog .....24  
 Floors .....24-25  
 Floor Tapes .....26
- Floor Welding Threads .....26  
 Fluorescent Paint Kit .....18  
 Fluorescent Paints .....20  
 Foamcoat .....21  
 Fog Machines .....22-23  
 Fog Fluid .....23  
 Front Projection Screens .....15
- G** Gaffers Tape .....14  
 Glamé .....30  
 Glass Gobos .....13-14  
 Glazes .....19  
 Gear Drive Rotators .....4  
 Glitter .....30  
 Glow Tape .....14  
 Gobo Catalog .....13  
 Gobo Holders .....14  
 Gobo Rotators .....3-4  
 Gobo Stainless Steel .....13  
 Granulated Floor  
 Cleanser .....26
- H** Hanging and Attaching  
 Hardware .....28  
 Heavy Duty Floor Cleanser .....26  
 Hinges .....27  
 Holders, Gobo .....14  
 Hybrid Two-Fer .....9
- I** I-Cue Intelligent Mirror .....5  
 Iddings Deep Colors .....18  
 Iddings Deep Colors Paint Kit .....18  
 Image Glass .....13  
 Indexing Rotatosr .....3-4  
 Infinity .....4  
 iPro™ .....9  
 iPro Slides .....9  
 iPro Slide Film .....9
- K** Keying Paints .....17
- L** Lashing and Bracing Hardware .....27  
 Latex Adhesive No. 555 .....26  
 Lay-In Brushes .....20  
 LED Channel Mount .....12  
 Lens Cleaner .....12  
 Lens Tissue .....12  
 Light Fog Fluid .....23  
 Litepad Axiom .....5  
 Litepad DL .....6



- Litepad HO+ .....6  
 LitepadKits .....7  
 Litepad Accessories .....7-8  
 Loose Pin Hinge .....27  
**M** Metalix .....31  
 Mirrors .....31  
 Model 1700 .....22  
 Model 1900 .....22  
 MR-16 Filter Holder .....12  
 Multi-Lens .....31  
**N** Non-Skid Eye .....27  
 Off Broadway Paint .....18  
 Off Broadway Paint Kit .....18  
**P** Overheads .....16  
 Paint, Digital Compositing .....17  
 Paint, Video .....17  
 Paint Sampler Kits .....18  
 Panel Mount Connectors .....29  
 Pattern Holders .....14  
 Performance Floor .....25  
 Permacolor Architectural  
 Series .....11  
 Permacolor Dichroic  
 Filters .....11  
 Permacolor Frames .....12  
 Permacolor Technical  
 Coatings .....11  
 Personalized Connectors .....29  
 Pin Wire .....27  
 Polarizing Filters .....16  
 PortaBarre .....26  
 Power Supply Units .....5  
 Premiere Clear .....21  
 Prismatics .....14  
 Projection Screen .....15  
**Q** Quick Color Sleeves .....12  
**R** Rear Projection Screens .....15  
 Reflection Media .....16  
 Reflector Cleaner .....12  
 REVO™ Dual Indexing Rotator ...3  
 RevoPRO™ Gobo Rotator .....3  
 Revo Rotator Accessories .....3  
 Rocker Heel .....27  
 Rosco Paint Sampler .....18  
 Roscoflamex DF .....21  
 Roscoflamex NF .....21  
 Roscoflamex PA .....21  
 Roscoflamex PC .....21  
 Roscoflamex SF .....21  
 Roscoflamex WD .....21  
 Roscoglo Paint .....20  
 Roscoleum Floor .....25  
 Roscoleum Adhesive .....26  
 Roscolux .....10  
 Roscopak .....16  
 Roscoscreen .....15  
 Roscosleeves .....12  
 Roscotiles .....25  
 RoscoVIEW .....16  
 Rotator Accessories .....4  
**S** Safety Frames .....10  
 Sampler Kits, Paint .....18  
 Sandbags .....27  
 Scaffold Clamps .....28  
 Scheel Brace Cleat .....27  
 Screens .....15  
 Screen Tape .....15  
 Shimmer Scrim .....30  
 Show Floor .....25  
 Showcloth .....30  
 Shrink Mirror .....31  
 SimpleSpin™ Dual Gobo Rotator ...3  
 Slash Curtains .....30  
 Slit Drape .....30  
 Smoke Machines .....22-23  
 Smooths .....31  
 Sparklene .....31  
 Spike Tape .....14  
 Stage & Studio Fluid .....23  
 Stage Plug .....28  
 Stage Screws .....28  
 Stainless Steel Gobos .....13  
 Steel Stage Screw .....28  
 Stippled Colorizers .....13  
 Storage Drawers .....12  
 Strain Relief .....29  
 Stretch-N-Hook .....15  
 Studio Floor .....25  
 SubFloor .....25  
 Super Heat Shield .....10  
 Supersaturated Paint  
 Concentrated Bases .....19  
 Supersaturated Roscopaint .....19  
 Supersaturated Paint Kit .....18  
 Sure Clamp .....27  
 Sure Hinge .....27  
**T** Tec Stretch Film .....14  
 Test Kits, Paint .....18  
 ThermaShield .....10  
 Tight Pin Hinge .....27  
 Tiles .....25  
 Top Hanger Iron .....28  
 Tough Prime .....19  
 Transparent Screen Tape .....15  
 TruColor IR .....16  
 TV Paints .....17  
**U** Ultimatte Paints .....17  
 Universal Iris Slot Holder .....14  
 UV Filter .....10  
**V** Variable Speed Controller .....4  
 Video Paints .....17  
 Vivid FX Sample Kit .....18  
 VividFX Ultraviolet Paint .....20  
 Vortex 360 Dual Rotator .....4  
**W** Wagon Brakes .....27  
 Wallhugger .....29  
 Welding Threads .....26  
**X** X-Effects Projector .....5



[www.rosco.com](http://www.rosco.com)

52 Harbor View Avenue, Stamford, CT 06902  
(203)708-8900 • 1(800)ROSCO NY • Fax: (203)708-8919

1265 Los Angeles Street, Glendale, CA 91204  
(818)543-6700 • 1(800)ROSCO LA • Fax: (818)662-9470

Also in: Toronto, London, Madrid, São Paulo and Sydney

L99CAT052011