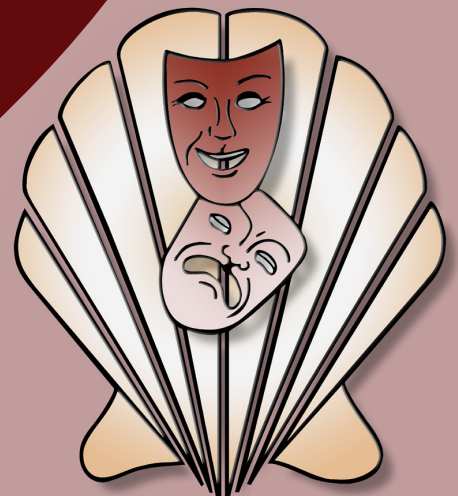


Schell Scenic Studio, Inc.

**Backdrop
Recommendations List
for the staging of
Fools**

*Over a century of service to the
entertainment industry.*
EST. 1904





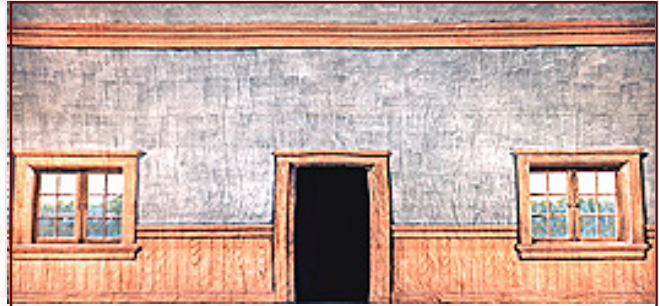
Fools



1-AC. Fairyland

Castle in distance atop mountain.

43' x 21' - 40 lbs



15-I. Plain Interior

Practical door opening 3'-0" W x 6'-7" H. Two painted windows (non-practical).

39' x 19'6" - 27 lbs



31. Cornpo

Stylized shacks on hill-side.

36' x 21' - 42 lbs



62-E. Foliage Leg & Border (3) 27' x 20' - 32 lbs (per set)

Natural foliage legs and border. Borders overlap in center for desired opening.

Don't Forget to Plan Your Rentals in Advance...

At Schell Scenic Studio we experience a number of "Peak Backdrop Rental Seasons" throughout the year. Because of this we recommend that you plan all of your backdrop rentals at least 6 - 12 months in advance. By planning your rentals in advance you decrease the risk of having to accept a substitute backdrop.

Thank you, and we look forward to assisting you on your next production!

- The Schell Scenic Studio

All images Copyright © 2015 Schell Scenic Studio, Inc. Any reproduction without permission is strictly prohibited. Images are intended for reference only. Due to the variations in monitors and printers, accurate color representation is neither implied or guaranteed.

TEL: (614) 444-9550

FAX: (614) 444-9554

841 South Front Street ♦ Columbus, Ohio ♦ 43206

Schell Scenic Studio, Inc.



Fools



84. Old Country Tabs (4) 7' x 17'6" - 24 lbs
Front views of four typical European houses, windows and doors are non-practical.



110. Village 40' x 21' - 37 lbs
View of small Russian village with buildings and houses in foreground, mountains in distance.



111-A. Village 43' x 21' - 38 lbs
View of small village with buildings and houses in foreground.



112. Village 43' x 21' - 38 lbs
Typical Russian peasant house with thatched-roofed buildings.

Schell Scenic Studio, Inc.
A family tradition of serving the theatre community since 1904.

Welcome to Schell Scenic Studio Online!

We are your best resource for scenic Backdrops, Stage Lighting, Theatrical Equipment, Drapery and Supplies. Large inventory and Nationwide Shipping! Rentals, Sales and Service.

We are the preeminent resource center for scenic backdrops, draperies, stage lighting, special effects equipment and props.

We offer rental and sales of backdrops, draperies, lighting, paint, gel (color), scenery, gross patterns, theatrical foggers, fog and haze machines, fog and haze fluid, and sound equipment for installation.

Our products are designed for use in theatres, television, and more.

www.schellscenic.com

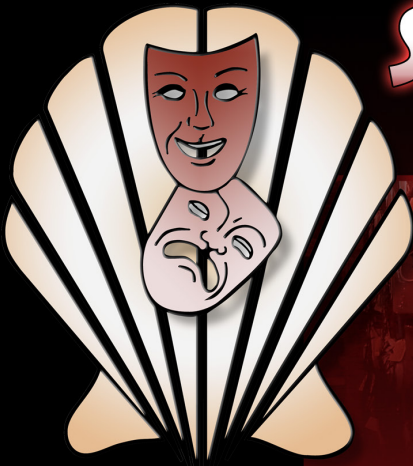
Have you explored the new-and-improved Schell Scenic Studio website?

Log on to www.schellscenic.com today and discover a wealth of Schell Scenic Studio information at your fingertips!

Whether you'd like to learn about our digital printing capabilities, download manuals to the latest in lighting and special effects equipment, or track your recent backdrop shipment, look no further!

You will find all of that and more at www.schellscenic.com!

All images Copyright © 2015 Schell Scenic Studio, Inc. Any reproduction without permission is strictly prohibited. Images are intended for reference only. Due to the variations in monitors and printers, accurate color representation is neither implied or guaranteed.



SHELL SCENIC STUDIO ***IS MORE THAN JUST BACKDROPS!***

Sure, you know Schell Scenic Studio as the place to go for your theatrical backdrops, but have you explored the many other services that Schell has to offer?

Call today and learn how we can help you in all aspects of your next theatrical production!

- Digital Design Studio
- Large-Format Digital Printing Shop
- Lighting Equipment & Accessories
- Special Effects
- Stage Props & Accessories
- And Much More!



Schell Scenic Studio, Inc.

Backdrop Recommendations for

Fools

These limited selections can help you get started finding the appropriate drops for your production or event.

Drops which have been provided for other customers include:

#1-AC, #15-I, #31, #62-E, #84, #110, #111-A, #112

These are only suggestions from previous rentals.

We have many more drops in our catalog which might better suit you style.

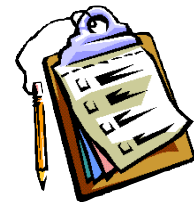


If you have an innovative and creative staging with our backdrops, please don't hesitate to contact us. We are always interested in the ways that our customers make use of our scenics.

info@schellscenic.com

These are only some of the hundreds of backdrops available at Schell Scenic Studio. These suggestions are the results of our customers' choices in our many years of service to the theatre.

Things to Do Before You Call:



Have a calendar handy to check your dates.

Make sure you know the exact day you need the drops to arrive and when you can ship them out again.

Plan your rentals in advance.

During peak backdrop rental seasons (ie. December, June, etc.) it may be necessary to place your rental order 6 - 12 months in advance.



Have your Schell Scenic Catalog on hand.

Be sure you've reviewed our policies and procedures.

Choose two or three back-up choices per backdrop.

Make sure you write down second or third choices per backdrop.



Check the measurements of your stage and the drops you are renting.

Schell Scenic drops come in different dimensions. Make sure that your selected drops will fit your venue.



Have a credit card ready.

To place a reservation on a backdrop you may be asked to do so with a major credit card.

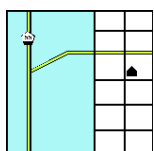


Get a purchase order number.

Some organizations require that we place their purchase order numbers on invoices.

Write down your Schell order number.

*We will use this number to access individual orders. **Note: Your signed confirmation is required before your order is ready to process.***



Know your business address.

UPS can not guarantee timely delivery to residential addresses. This could cause the backdrops to arrive to you later than expected.