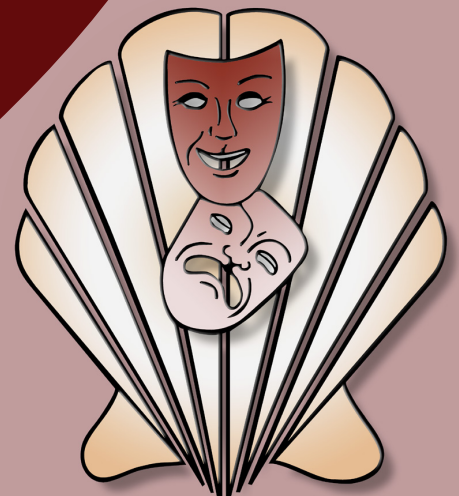


Schell Scenic Studio, Inc.

**Backdrop
Recommendations List
for the staging of
Gentlemen Prefer
Blondes**



*Over a century of service to the
entertainment industry.*
EST. 1904



Gentlemen Prefer Blondes



3-I. French Window

Non-practical French door.

30' x 16' - 23 lbs



7-M. Orchestra

Band members silhouetted inside semicircle of yellows, oranges and reds. Sunflower border and scallop design at bottom.

43' x 20' - 28 lbs



11-I. Night Club or Ballroom

Elegantly decorated room with arches, draperies, red carpet and bunting.

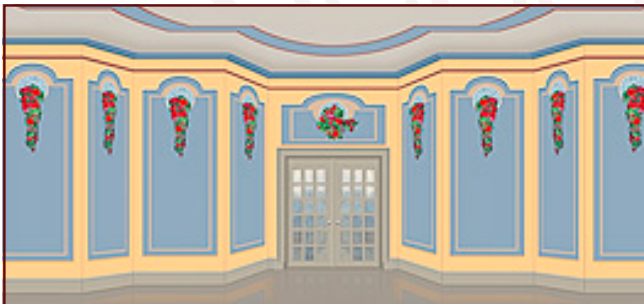
38' x 21' - 32 lbs

Can't Find It?

Can't find what you need?

Just give us a call!

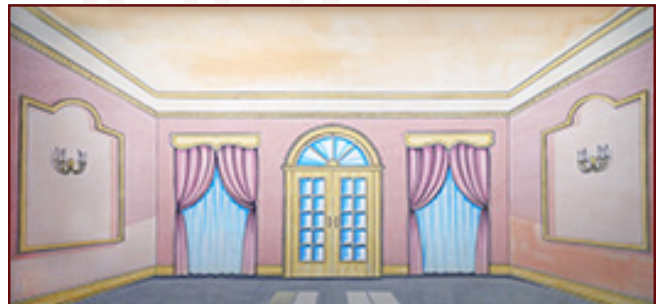
Our friendly staff is here to help you find the backdrop you need for your next production.



22-I. Fancy Interior

Decorative living room with center french doors (non-practical).

39' x 21' - 36 lbs



22-IA. Fancy Interior

Decorative living room with light pink walls, two red draped windows and center french doors. Pinks, gold and blue.

43' x 21' - 42 lbs

All images Copyright © 2015 Schell Scenic Studio, Inc. Any reproduction without permission is strictly prohibited.

Images are intended for reference only. Due to the variations in monitors and printers, accurate color representation is neither implied or guaranteed.

TEL: (614) 444-9550

FAX: (614) 444-9554

841 South Front Street • Columbus, Ohio • 43206

Schell Scenic Studio, Inc.



Gentlemen Prefer Blondes



27-B. Paris Street

38' x 21' - 32 lbs

Tree-lined boulevard in foreground with Arc de Triomphe and Eiffel Tower in near distance.



34. Ocean, Horizon & Beach

43' x 21' - 41 lbs

Ocean shoreline with beach.



42-B. Cruise Ship

39' x 21' - 35 lbs

Aft deck view, doors, rails, lifeboats, etc.



48-B. Landscape

30' x 16' - 18 lbs

A clearing showing landscape, brook and birch trees, is seen from a densely wooded forest.

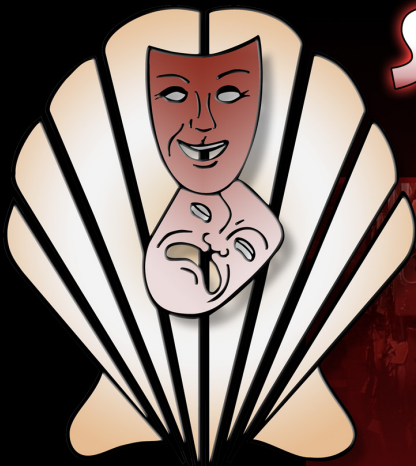
Don't Forget to Plan Your Rentals in Advance...

At Schell Scenic Studio we experience a number of "Peak Backdrop Rental Seasons" throughout the year. Because of this we recommend that you plan all of your backdrop rentals at least 6 - 12 months in advance. By planning your rentals in advance you decrease the risk of having to accept a substitute backdrop.

Thank you, and we look forward to assisting you on your next production!

- The Schell Scenic Studio

All images Copyright © 2015 Schell Scenic Studio, Inc. Any reproduction without permission is strictly prohibited. Images are intended for reference only. Due to the variations in monitors and printers, accurate color representation is neither implied or guaranteed.



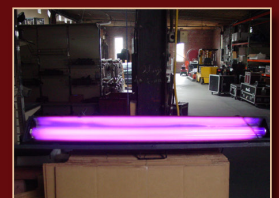
SHELL SCENIC STUDIO

IS MORE THAN JUST BACKDROPS!

Sure, you know Schell Scenic Studio as the place to go for your theatrical backdrops, but have you explored the many other services that Schell has to offer?

- Digital Design Studio
- Large-Format Digital Printing Shop
- Lighting Equipment & Accessories
- Special Effects
- Stage Props & Accessories
- And Much More!

Call today and learn how we can help you in all aspects of your next theatrical production!



Schell Scenic Studio, Inc.

Backdrop Recommendations for Gentlemen Prefer Blondes

These limited selections can help you get started finding the appropriate drops for your production or event.

Drops which have been provided for other customers include:

#3-I, #7-M, #11-I, #22-I, #22-IA, #27-B, #34, #42-B, #48-B

These are only suggestions from previous rentals.

We have many more drops in our catalog which might better suit you style.

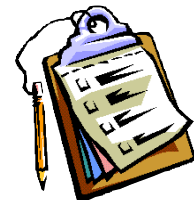


If you have an innovative and creative staging with our backdrops,
please don't hesitate to contact us. We are always interested in the ways that
our customers make use of our scenics.

info@schellscenic.com

These are only some of the hundreds of backdrops available at Schell Scenic Studio.
These suggestions are the results of our customers' choices in our many years of service to the theatre.

Things to Do Before You Call:



Have a calendar handy to check your dates.

Make sure you know the exact day you need the drops to arrive and when you can ship them out again.

Plan your rentals in advance.

During peak backdrop rental seasons (ie. December, June, etc.) it may be necessary to place your rental order 6 - 12 months in advance.

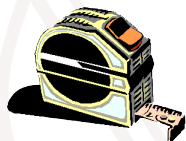


Have your Schell Scenic Catalog on hand.

Be sure you've reviewed our policies and procedures.

Choose two or three back-up choices per backdrop.

Make sure you write down second or third choices per backdrop.



Check the measurements of your stage and the drops you are renting.

Schell Scenic drops come in different dimensions. Make sure that your selected drops will fit your venue.



Have a credit card ready.

To place a reservation on a backdrop you may be asked to do so with a major credit card.

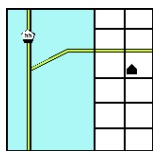


Get a purchase order number.

Some organizations require that we place their purchase order numbers on invoices.

Write down your Schell order number.

*We will use this number to access individual orders. **Note: Your signed confirmation is required before your order is ready to process.***



Know your business address.

UPS can not guarantee timely delivery to residential addresses. This could cause the backdrops to arrive to you later than expected.