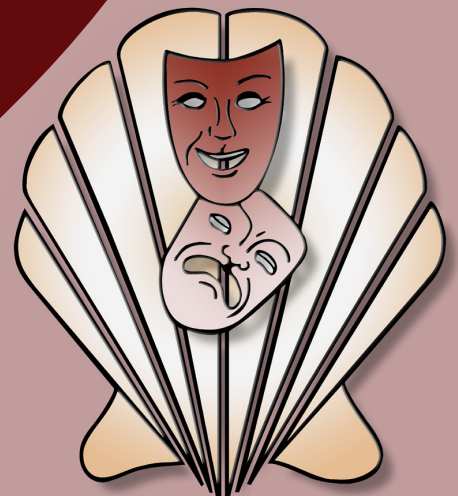


Schell Scenic Studio, Inc.

**Backdrop  
Recommendations List  
for the staging of  
George M**

*Over a century of service to the  
entertainment industry.*  
EST. 1904





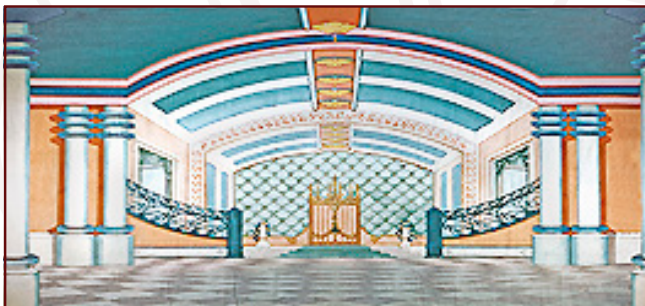
## George M



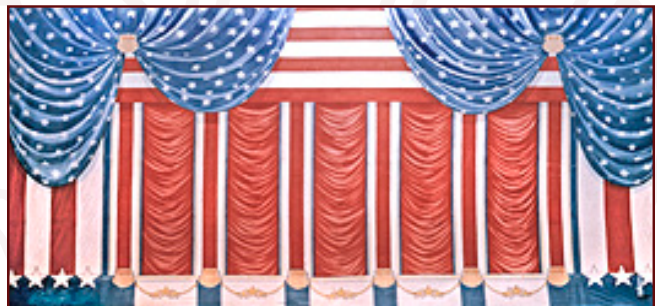
**1-IAB. Palace** 43' x 21' - 42 lbs  
*Beige walls with chandeliers. Two windows and non-practical door.*



**11-I. Night Club or Ballroom** 38' x 21' - 32 lbs  
*Elegantly decorated room with arches, draperies, red carpet and bunting.*



**11-IA. Palace or Ballroom** 39' x 21' - 37 lbs  
*Columned hall with gated stairway leading to non-practical double doors.*



**12-M. Patriotic** 38' x 21' - 33 lbs  
*White and red stripes between red painted Austrian puff, framed by blue starred swags upper left and right.*



**12-MA. Patriotic Leg Drop** (2) 27' x 21' - 44 lbs  
*White and red stripes overlap in center with blue starred swag left and right. Legs are 9' W, maximum opening 42' W x 18' H approx.*



**15-I. Plain Interior** 39' x 19'6" - 27 lbs  
*Practical door opening 3'-0" W x 6'-7" H. Two painted windows (non-practical).*

All images Copyright © 2015 Schell Scenic Studio, Inc. Any reproduction without permission is strictly prohibited.  
Images are intended for reference only. Due to the variations in monitors and printers, accurate color representation is neither implied or guaranteed.

TEL: (614) 444-9550

FAX: (614) 444-9554

841 South Front Street • Columbus, Ohio • 43206

# Schell Scenic Studio, Inc.



## George M



### 23-IA. Palace

*Ornate palace interior.*

39' x 21' - 30 lbs



### 25-M. American Flag

*Nylon American flag with ties at top for horizontal hanging.*

30' x 20' - 22 lbs



### 26-A. Times Square N.Y. City

*Times Square circa mid-1900's.*

43' x 20' - 38 lbs

### *Don't Know What You Need?*

So, you have a big production coming up,  
but you don't know what you need...

**Give us a call, that's why we're here!**

*We would be happy to recommend a selection  
of backdrops that meet your specific needs!*



### 26-C. Times Square N.Y. City

*Modern view of area showing signs, billboards and marquees.*

43' x 22' - 40 lbs



### 26-CB. Times Square N.Y. City

*Modern view of area showing signs, billboards and marquees.*

30' x 16' - 23 lbs

All images Copyright © 2015 Schell Scenic Studio, Inc. Any reproduction without permission is strictly prohibited.

Images are intended for reference only. Due to the variations in monitors and printers, accurate color representation is neither implied or guaranteed.



## George M



**27-I. Modern Office**

*Windows opened to show outside buildings.*

38' x 21' - 30 lbs



**34. Ocean, Horizon & Beach**

*Ocean shoreline with beach.*

43' x 21' - 41 lbs

### *Can't Find It?*

*Can't find what you need?*

*Just give us a call!*

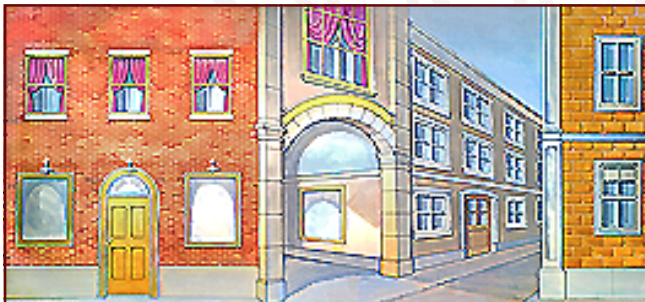
*Our friendly staff is here to help you find the backdrop you need for your next production.*



**37-I. Office**

*Gray stippled walls, brown woodwork and two non-practical doors.*

33' x 20' - 31 lbs



**49. Stage Door Street**

*Alley and corner of building showing stage door entrance. Front door opening.*

43' x 20' - 33 lbs



**49-A. Stage Door Street**

*Street scene with non-practical stage door.*

43' x 21' - 40 lbs

All images Copyright © 2015 Schell Scenic Studio, Inc. Any reproduction without permission is strictly prohibited. Images are intended for reference only. Due to the variations in monitors and printers, accurate color representation is neither implied or guaranteed.

TEL: (614) 444-9550

FAX: (614) 444-9554

841 South Front Street • Columbus, Ohio • 43206

# Schell Scenic Studio, Inc.



## George M



### 55. City Street

35' x 19'6" - 25 lbs

*Circa 1940's. Building surrounding downtown intersection.*



### 56. N.Y. Park Avenue

43' x 21' - 41 lbs

*Modernistic buildings facing the Pan Am building. Street center divided by trees and median.*



### 65-I. Backstage

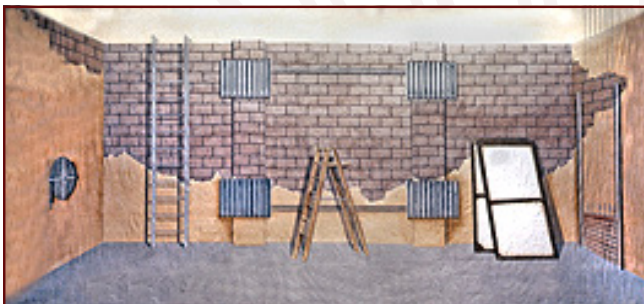
43' x 20' - 37 lbs

*Backwall of stage showing radiators, ladder, flats and arbor.*

## Did You Know?

Did you know that Schell Scenic Studio has been a cornerstone of the theatre community in Columbus, Ohio since 1904?

*Give us a call, and let us put a century of industry knowledge to work for you!*



### 65-IA. Backstage

43' x 20' - 37 lbs

*Exposed gray block with yellow walls. Arbor stage left.*



### 75-B. Old Time Street

43' x 21' - 42 lbs

*Black-and-white charcoal sketch looking up city street, lined with brick and stone buildings.*

All images Copyright © 2015 Schell Scenic Studio, Inc. Any reproduction without permission is strictly prohibited. Images are intended for reference only. Due to the variations in monitors and printers, accurate color representation is neither implied or guaranteed.



## George M



### 75-C. Tenement Street

43' x 21' - 36 lbs

Bright and stone apartment buildings with sidewalk in foreground and additional buildings in distance.



### 75-D. Victorian Street

43' x 21' - 40 lbs

Fronts of Victorian dwellings showing ornate detail, many windows and door entrances.



### 75-E. Tenement Street

43' x 21' - 40 lbs

Brick and stone apartment buildings with sidewalk, mailbox, and lamppost on street corner.



### 104. Brick Wall

43' x 22'6" - 37 lbs

Brick wall painted on muslin.

## *Don't Forget to Plan Your Rentals in Advance...*

*At Schell Scenic Studio we experience a number of "Peak Backdrop Rental Seasons" throughout the year. Because of this we recommend that you plan all of your backdrop rentals at least 6 - 12 months in advance. By planning your rentals in advance you decrease the risk of having to accept a substitute backdrop.*

*Thank you, and we look forward to assisting you on your next production!*

*- The Schell Scenic Studio*

All images Copyright © 2015 Schell Scenic Studio, Inc. Any reproduction without permission is strictly prohibited. Images are intended for reference only. Due to the variations in monitors and printers, accurate color representation is neither implied or guaranteed.

# Schell Scenic Studio, Inc.

## Backdrop Recommendations for George M

These limited selections can help you get started finding the appropriate drops for your production or event.

### George M

Scenic Backdrop #

#### Act I

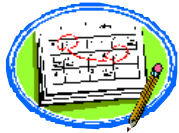
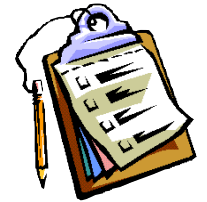
Scene 1: Prologue	
Scene 2: Providence, Rhode Island, 1878	
Scene 3: Onstage, Columbia Theatre, Cedar Rapids .....	#104, #104-A, #65-I
Scene 4: A street in Cedar Rapids .....	#49, #55, #75-B, #75-C, #75-D, #75-E
Scene 5: Madam Grimaldi's boarding house .....	#37-I, #37-IA
Scene 6: Enroute to New York	
Scene 7: Adams Street Theatre, various other theatres, New York, 1901-1903	
Scene 8: General area, New York, then in front of the Savoy Theatre .....	#49, #55, #75-B, #75-C, #75-D, #75-E
Scene 9: Stage of the Liberty Theatre, New York .....	#104, #104-A, #65-I

#### Act II

Scene 1: Office of Cohan and Harris, Fay Templeton's apartment .....	#27-I, #39-I, #39-IA
Scene 2: Onstage, New Amsterdam Theatre .....	#104, #104-A, #65-I
Scene 3: Rector's restaurant, Jan. 1, 1907 .....	#1-IAB, #11-I, #11-IA, #23-IA
Scene 4: Street outside Rector's, next morning .....	#49, #55, #75-B, #75-C, #75-D, #75-E
Scene 5: The years till 1919	
Scene 6: The years till 1937	
Scene 7: Midtown New York, February 1937 .....	#26-A, #26-C, #26-CB, #56
Scene 8: Stage of the Alvin Theatre .....	#12-M, #12-MA
Scene 9: Epilogue	

These are only some of the hundreds of backdrops available at Schell Scenic Studio.  
These suggestions are the results of our customers' choices in our many years of service to the theatre.

# Things to Do Before You Call:



**Have a calendar handy to check your dates.**

*Make sure you know the exact day you need the drops to arrive and when you can ship them out again.*

**Plan your rentals in advance.**

*During peak backdrop rental seasons (ie. December, June, etc.) it may be necessary to place your rental order 6 - 12 months in advance.*

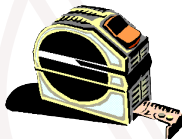


**Have your Schell Scenic Catalog on hand.**

*Be sure you've reviewed our policies and procedures.*

**Choose two or three back-up choices per backdrop.**

*Make sure you write down second or third choices per backdrop.*



**Check the measurements of your stage and the drops you are renting.**

*Schell Scenic drops come in different dimensions. Make sure that your selected drops will fit your venue.*



**Have a credit card ready.**

*To place a reservation on a backdrop you may be asked to do so with a major credit card.*

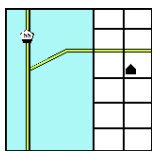


**Get a purchase order number.**

*Some organizations require that we place their purchase order numbers on invoices.*

**Write down your Schell order number.**

*We will use this number to access individual orders. **Note: Your signed confirmation is required before your order is ready to process.***



**Know your business address.**

*UPS can not guarantee timely delivery to residential addresses. This could cause the backdrops to arrive to you later than expected.*