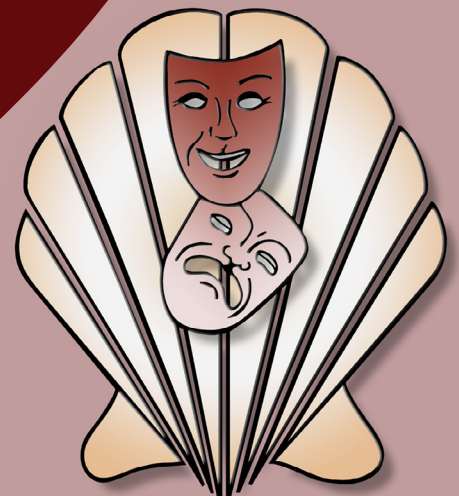


***SCHELL SCENIC STUDIO, INC.***

**Backdrop  
Recommendations List  
for the staging of**

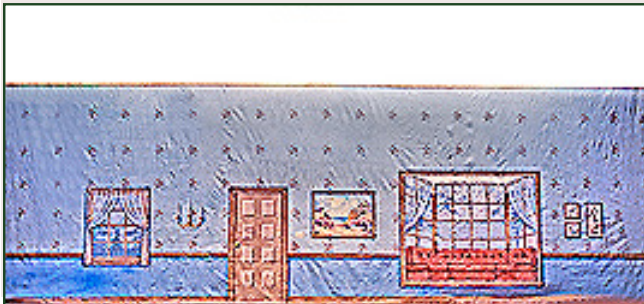
**Grease**



*Over a Century of Service to the  
Entertainment Industry*  
EST. 1904



## Grease



**15-IA. Plain Interior**

*Non-practical door.*

43' x 21' - 40 lbs



**30-IA. Basement**

*Typical basement with radiators.*

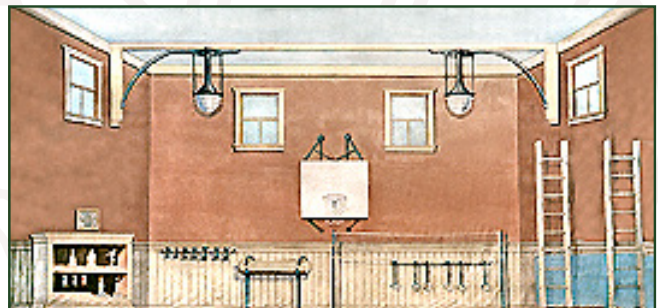
43' x 21' - 37 lbs



**35. Fraternity House**

*Brick house showing three stories. Practical center door, cut-out. Door is 3'W x 6'9"H.*

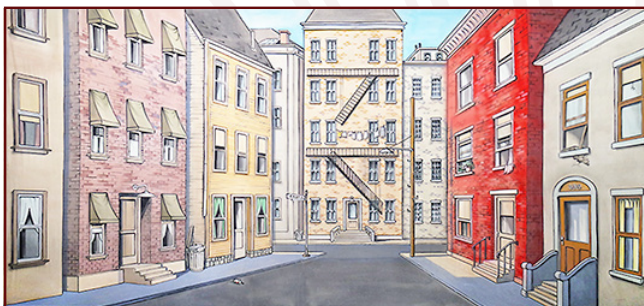
40' x 20' - 34 lbs



**36-I. Gymnasium**

*Typical 1940's gymnasium with basketball and volleyball nets, barbells and pommel horse.*

40' x 21' - 36 lbs



**75-CA. Tenement Street**

*Brick and stone apartment buildings with sidewalks and additional buildings in distance.*

30' x 16' - 22 lbs

### Can't Find It?

*Can't find what you need?*

*Just give us a call!*

*Our friendly staff is here to help you find the backdrop you need for your next production.*

## 614-444-9550

All images Copyright ©2005 - 2015 Schell Scenic Studio, Inc. Reproduction without permission is strictly prohibited.

Images are intended for reference use only. Due to variations in monitors and printers, accurate color representation is neither implied nor guaranteed.

All Images are low resolution, and will become pixelated if viewed above 200% magnification. Higher resolution photos are not available.

TEL: (614) 444-9550

FAX: (614) 444-9554

841 S. Front St. • Columbus, Ohio • 43206

# SCHELL SCENIC STUDIO, INC.



## Grease



**101-B. Main Street USA**  
*Storefronts and shops along Main Street.*

43' x 20' - 40 lbs



**104. Brick Wall**  
*Brick wall painted on muslin.*

43' x 22'6" - 37 lbs



**105-A. Back Alley**  
*Back alley with clotheslines strung between fire escapes.*

43' x 21' - 36 lbs



**114. Drive-In**  
*1950's-style drive-in.*

43' x 21' - 37 lbs

## *Don't Forget to Plan Your Rentals in Advance...*

*At Schell Scenic Studio we experience a number of "Peak Backdrop Rental Seasons" throughout the year. Because of this we recommend that you plan all of your backdrop rentals at least 6 - 12 months in advance. By planning your rentals in advance you decrease the risk of having to accept a substitute backdrop.*

*Thank you, and we look forward to assisting you on your next production!*

*- The Schell Scenic Studio*

All images Copyright ©2005 - 2015 Schell Scenic Studio, Inc. Reproduction without permission is strictly prohibited.  
Images are intended for reference use only. Due to variations in monitors and printers, accurate color representation is neither implied nor guaranteed.  
All Images are low resolution, and will become pixelated if viewed above 200% magnification. Higher resolution photos are not available.

# Schell Scenic Studio, Inc.

Prop Special Recommendations for

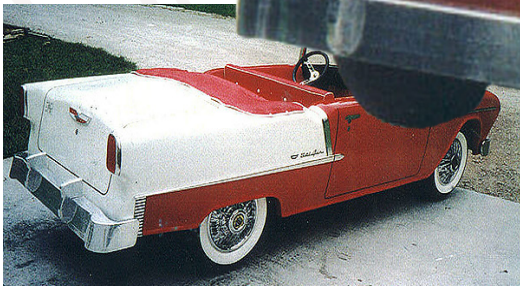
## Grease!



Available for rent is our Grease Car. This unique prop measures 148" long by 55" wide by 48" tall. Onboard is a battery that can be used to illuminate the headlights.

Due to its size and weight (750 lbs.), delivery and pickup is performed by Schell staff only.

To schedule an appointment to view the Grease Car in person, please contact us.



# Schell Scenic Studio, Inc.

## Backdrop Recommendations for Grease

These limited selections can help you get started finding the appropriate drops for your production or event.

Drops which have been provided for other customers include:

**#15-IA, #30-IA, #35, #36-I, #75-CA, #101-B, #104, #105-A, #114**

These are only suggestions from previous rentals.

We have many more drops in our catalog which might better suit you style.

### *Show Stopper Special!*

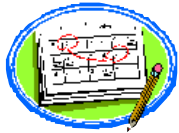
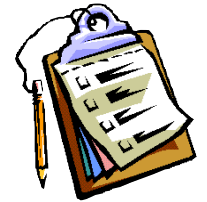
*Although it is a stage prop and not a backdrop, we feel that our Grease Car is such an important part of the staging of Grease that we had to list it here as one of the recommendations for the play.*

*Our Grease Car is a 3/4 scale reproduction of a late 1950's style sedan, with a functional interior.*

*Please contact one of our representatives to inquire about its availability and rental rates.*

These are only some of the hundreds of backdrops available at Schell Scenic Studio.  
These suggestions are the results of our customers' choices in our many years of service to the theatre.

# Things to Do Before You Call:



**Have a calendar handy to check your dates.**

*Make sure you know the exact day you need the drops to arrive and when you can ship them out again.*

**Plan your rentals in advance.**

*During peak backdrop rental seasons (ie. December, June, etc.) it may be necessary to place your rental order 6 - 12 months in advance.*

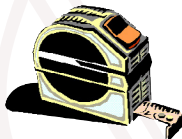


**Have your Schell Scenic Catalog on hand.**

*Be sure you've reviewed our policies and procedures.*

**Choose two or three back-up choices per backdrop.**

*Make sure you write down second or third choices per backdrop.*



**Check the measurements of your stage and the drops you are renting.**

*Schell Scenic drops come in different dimensions. Make sure that your selected drops will fit your venue.*



**Have a credit card ready.**

*To place a reservation on a backdrop you may be asked to do so with a major credit card.*

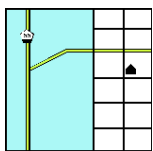


**Get a purchase order number.**

*Some organizations require that we place their purchase order numbers on invoices.*

**Write down your Schell order number.**

*We will use this number to access individual orders. **Note: Your signed confirmation is required before your order is ready to process.***



**Know your business address.**

*UPS can not guarantee timely delivery to residential addresses. This could cause the backdrops to arrive to you later than expected.*