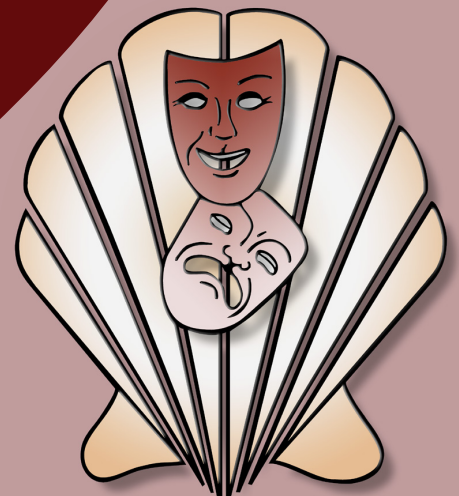


Schell Scenic Studio, Inc.

**Backdrop
Recommendations List**
for the staging of
**How to Succeed in
Business Without
Really Trying**



*Over a century of service to the
entertainment industry.*
EST. 1904



How to Succeed in Business Without Really Trying



1-M. Roof Garden

38' x 21' - 32 lbs

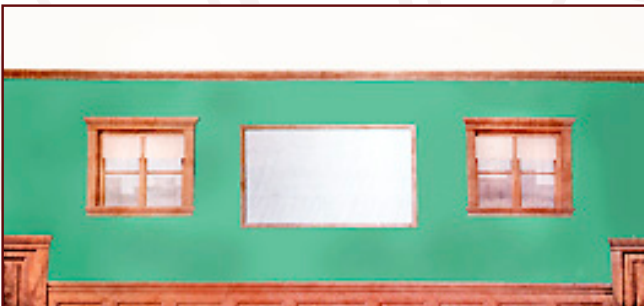
Stylized city skyline is viewed over a music staff railing with notes and clef symbols.



1-D. Siamese Garden

40'6" x 21' - 35 lbs

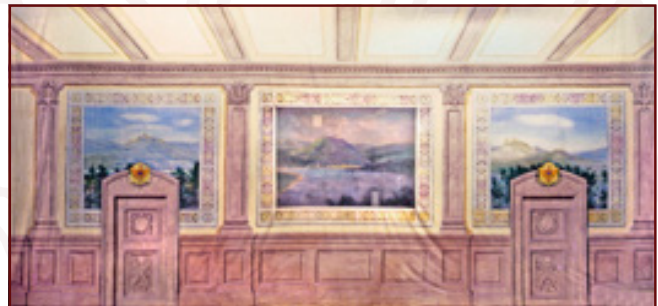
Temples and trees with pool in center foreground.



9-I. Courtroom or School Room

41' x 21' - 34 lbs

Painted green walls with brown paneling bottom with two windows and two doors (all non-practical).



24-IA. Tapestry Interior

39' x 21' - 40 lbs

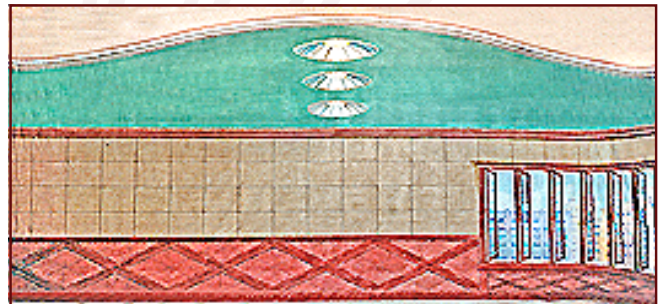
Wood walls with three tapestries and two non-practical doors.



26-B. New York Skyline

43' x 20' - 40 lbs

Realistic view of city skyline from harbor.



27-I. Modern Office

38' x 21' - 30 lbs

Windows opened to show outside buildings.

All images Copyright © 2015 Schell Scenic Studio, Inc. Any reproduction without permission is strictly prohibited. Images are intended for reference only. Due to the variations in monitors and printers, accurate color representation is neither implied or guaranteed.

TEL: (614) 444-9550

FAX: (614) 444-9554

841 South Front Street ♦ Columbus, Ohio ♦ 43206

Schell Scenic Studio, Inc.



How to Succeed in Business Without Really Trying



27-IA. Office or Library
Windows opened to show outside buildings.

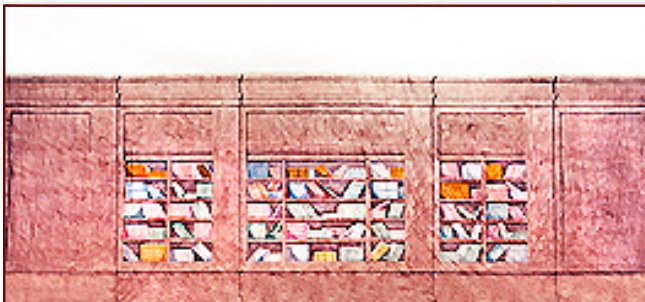
39' x 21' - 36 lbs



37-I. Office

Gray stippled walls, brown woodwork and two non-practical doors.

33' x 20' - 31 lbs



39-I. Library or Office

Wooden bookcases filled with books, with beige ceiling.

43' x 21' - 40 lbs



39-IA. Library or Office

Paneled walls with book shelves left and right of non-practical center window.

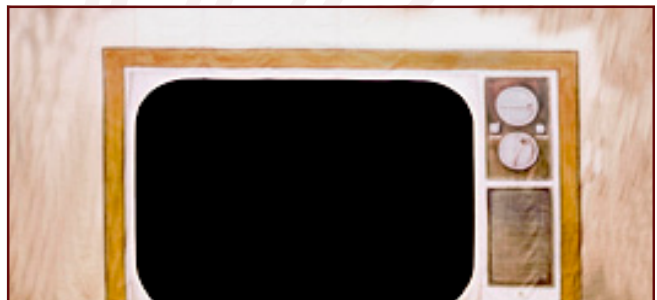
43' x 21' - 40 lbs



77. Pirate Ship

Side view of wooden square-rigged ship under full sail.

43' x 20' - 40 lbs

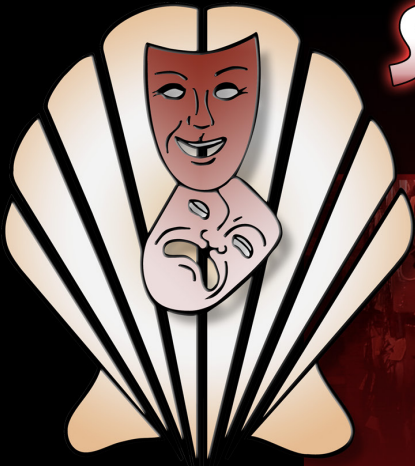


103-MA. TV Set Front

Front view of modern television set with control knobs on right and screen entirely removed. Opening is 20' W x 14' H.

43' x 20' - 44 lbs

All images Copyright © 2015 Schell Scenic Studio, Inc. Any reproduction without permission is strictly prohibited. Images are intended for reference only. Due to the variations in monitors and printers, accurate color representation is neither implied or guaranteed.

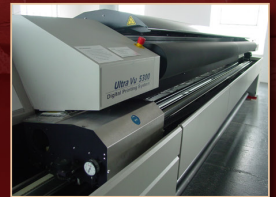


SHELL SCENIC STUDIO ***IS MORE THAN JUST BACKDROPS!***

Sure, you know Schell Scenic Studio as the place to go for your theatrical backdrops, but have you explored the many other services that Schell has to offer?

Call today and learn how we can help you in all aspects of your next theatrical production!

- Digital Design Studio
- Large-Format Digital Printing Shop
- Lighting Equipment & Accessories
- Special Effects
- Stage Props & Accessories
- And Much More!



Schell Scenic Studio, Inc.

Backdrop Recommendations for

How to Succeed in Business Without Really Trying

These limited selections can help you get started finding the appropriate drops for your production or event.

Drops which have been provided for other customers include:

**#1-m, #1-D, #9-I, #24-IA, #26-B, #26-BA, #27-I
#27-IA, #37-I, #39-I, #39-IA, #77, #103-MA**

These are only suggestions from previous rentals.
We have many more drops in our catalog which might better suit you style.

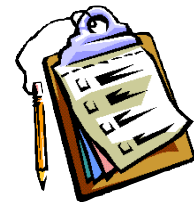


If you have an innovative and creative staging with our backdrops,
please don't hesitate to contact us. We are always interested in the ways that
our customers make use of our scenics.

info@schellscenic.com

These are only some of the hundreds of backdrops available at Schell Scenic Studio.
These suggestions are the results of our customers' choices in our many years of service to the theatre.

Things to Do Before You Call:



Have a calendar handy to check your dates.

Make sure you know the exact day you need the drops to arrive and when you can ship them out again.

Plan your rentals in advance.

During peak backdrop rental seasons (ie. December, June, etc.) it may be necessary to place your rental order 6 - 12 months in advance.



Have your Schell Scenic Catalog on hand.

Be sure you've reviewed our policies and procedures.

Choose two or three back-up choices per backdrop.

Make sure you write down second or third choices per backdrop.



Check the measurements of your stage and the drops you are renting.

Schell Scenic drops come in different dimensions. Make sure that your selected drops will fit your venue.



Have a credit card ready.

To place a reservation on a backdrop you may be asked to do so with a major credit card.

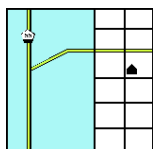


Get a purchase order number.

Some organizations require that we place their purchase order numbers on invoices.

Write down your Schell order number.

*We will use this number to access individual orders. **Note: Your signed confirmation is required before your order is ready to process.***



Know your business address.

UPS can not guarantee timely delivery to residential addresses. This could cause the backdrops to arrive to you later than expected.