

Schell Scenic Studio, Inc.

**Backdrop
Recommendations List
for the staging of
Jack
and the Beanstalk**

*Over a century of service to the
entertainment industry.*
EST. 1904





Jack and the Beanstalk



1-A. Fairyland

Mountain and castle.

39' x 21' - 36 lbs



1-FB. Storybook Castle

A large stone castle.

43' x 20' - 40 lbs



4-E. Rainbow Scrim

Sky with clouds. Rainbow vanishes in the distance.

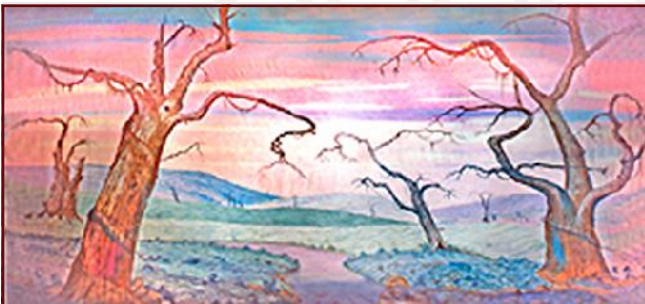
40' x 16' - 30 lbs



16. Weird Woods

Barren trees left and right with center path leading to distance.

43' x 20'6" - 38 lbs



16-O. Weird Woods (Original)

Original version of #16 "Weird Woods".

38' x 18' - 30 lbs



35-I. Stone Arch

Three practical arched openings, stone block wall. center arch 16' high, left and right arches 14' high.

41' x 21' - 42 lbs

All images Copyright ©2005 - 2015 Schell Scenic Studio, Inc. Reproduction without permission is strictly prohibited. Images are intended for reference use only. Due to variations in monitors and printers, accurate color representation is neither implied nor guaranteed. All Images are low resolution, and will become pixelated if viewed above 200% magnification. Higher resolution photos are not available.

TEL: (614) 444-9550

FAX: (614) 444-9554

841 South Front Street • Columbus, Ohio • 43206

Schell Scenic Studio, Inc.



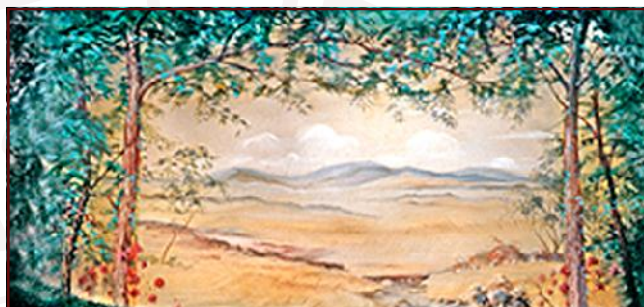
Jack and the Beanstalk



41. Hell Cavern

43' x 20' - 40 lbs

Rocky arches frame molten lava and flames.



50. Spring Landscape

38' x 18' - 42 lbs

A densely forested foreground opens into a rolling meadow with hills in the distance.



54-B. Farm

38' x 21'6" - 40 lbs

Barn with newly planted corn in fields.



65-AB. Spring Landscape

30' x 16' - 25 lbs

Spring landscape with trees and path in foreground.



73-F. Woods

43' x 21' - 39 lbs

Bright forest with clearing in center.



57-C. Autumn

20' x 12' - 11 lbs

Harvest field with corn stalks and pumpkins. Path leading to farmhouses in distance.

All images Copyright ©2005 - 2015 Schell Scenic Studio, Inc. Reproduction without permission is strictly prohibited. Images are intended for reference use only. Due to variations in monitors and printers, accurate color representation is neither implied nor guaranteed. All Images are low resolution, and will become pixelated if viewed above 200% magnification. Higher resolution photos are not available.



Jack and the Beanstalk



59. Hillbilly

43' x 20' - 40 lbs

Shed, shack, pump and fence with Great Smokey Mountains in distance.



62-D. Foliage Leg & Border (2)30'x16'-10 lbs (per set)

Natural foliage legs and border. Border overlaps in center for desired opening. Maximum opening is 22' x 12'3".



73-A. Woods

30' x 16' - 22 lbs

Dense woods with shafts of sunlight piercing through heavy top foliage.



97-A. Sky & Clouds

43' x 20' - 34 lbs

Thin cirrus clouds on a blue background.



97-C. Sky & Clouds

43' x 20' - 40 lbs

Whispy cirrus clouds on a blue background.



111-A. Village

43' x 21' - 38 lbs

View of small village with buildings and houses in foreground.

All images Copyright ©2005 - 2015 Schell Scenic Studio, Inc. Reproduction without permission is strictly prohibited. Images are intended for reference use only. Due to variations in monitors and printers, accurate color representation is neither implied nor guaranteed. All Images are low resolution, and will become pixelated if viewed above 200% magnification. Higher resolution photos are not available.

Schell Scenic Studio, Inc.

Backdrop Recommendations for

Jack and the Beanstalk

These limited selections can help you get started finding the appropriate drops for your production or event.

Drops which have been provided for other customers include:

#1-A, #4-E, #35-I, #50, #65-AB, #73-F, #97-A, #97-C, #111-A

These are only suggestions from previous rentals.

We have many more drops in our catalog which might better suit you style.

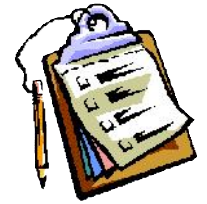


If you have an innovative and creative staging with our backdrops, please don't hesitate to contact us. We are always interested in the ways that our customers make use of our scenics.

info@schellscenic.com

These are only some of the hundreds of backdrops available at Schell Scenic Studio. These suggestions are the results of our customers' choices in our many years of service to the theatre.

Things to Do Before You Call:



Have a calendar handy to check your dates.

Make sure you know the exact day you need the drops to arrive and when you can ship them out again.

Plan your rentals in advance.

During peak backdrop rental seasons (ie. December, June, etc.) it may be necessary to place your rental order 6 - 12 months in advance.



Have your Schell Scenic Catalog on hand.

Be sure you've reviewed our policies and procedures.

Choose two or three back-up choices per backdrop.

Make sure you write down second or third choices per backdrop.



Check the measurements of your stage and the drops you are renting.

Schell Scenic drops come in different dimensions. Make sure that your selected drops will fit your venue.



Have a credit card ready.

To place a reservation on a backdrop you may be asked to do so with a major credit card.

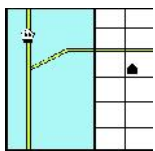


Get a purchase order number.

Some organizations require that we place their purchase order numbers on invoices.

Write down your Schell order number.

*We will use this number to access individual orders. **Note: Your signed confirmation is required before your order is ready to process.***



Know your business address.

UPS can not guarantee timely delivery to residential addresses. This could cause the backdrops to arrive to you later than expected.