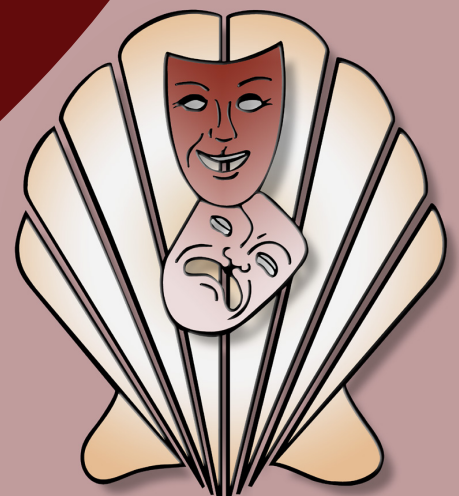


Schell Scenic Studio, Inc.

**Backdrop
Recommendations List
for the staging of
Mame**

*Over a century of service to the
entertainment industry.*
EST. 1904





Mame



1-IAB. Palace

43' x 21' - 42 lbs

Beige walls with chandeliers. Two windows and non-practical door.



6-M. Night Sky

40' x 20' - 26 lbs

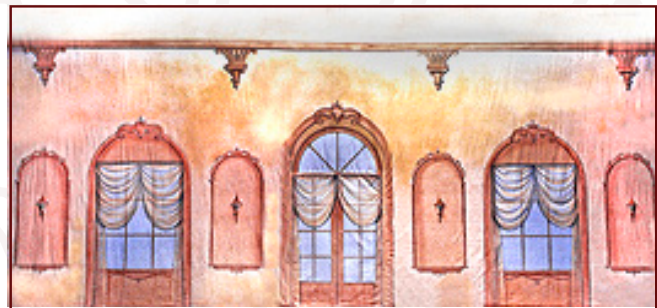
Night sky with cirrus clouds, stars and moon, painted on royal blue duvetyne.



15-I. Plain Interior

39' x 19'6" - 27 lbs

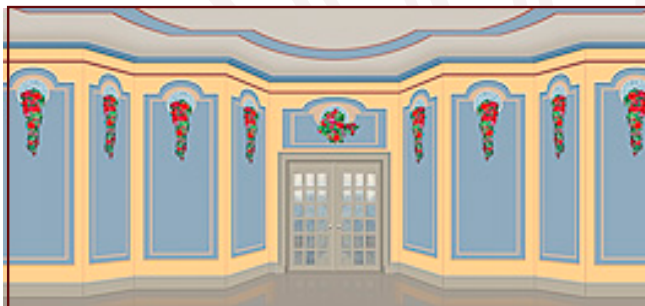
Practical door opening 3'-0" W x 6'-7" H. Two painted windows (non-practical).



16-IA. Fancy Interior (Opening)

43' x 21' - 32 lbs

Center door is removable with velcro. Opening is 5'-8" wide by 7'-7" high. Detailed sconces. All windows are non-practical.



22-I. Fancy Interior

39' x 21' - 36 lbs

Decorative living room with center french doors (non-practical).



26. Times Square N.Y. City

43' x 20' - 36 lbs

Times Square circa early 1900's. Stone buildings without billboards, neon signs, etc.

All images Copyright © 2007 Schell Scenic Studio, Inc. Reproduction without permission is strictly prohibited. Images are intended for reference only. For color renditions of these backdrops, please visit www.SchellScenic.com to download our catalog.

TEL: (614) 444-9550

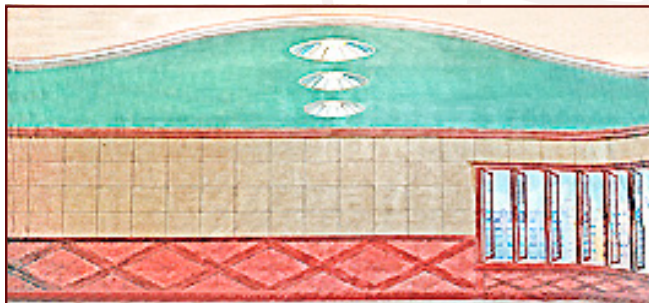
FAX: (614) 444-9554

841 South Front Street ♦ Columbus, Ohio ♦ 43206

Schell Scenic Studio, Inc.



Mame



27-I. Modern Office

Windows opened to show outside buildings.

38' x 21' - 30 lbs



32-I. Bedroom or Powder Room

Walls with two draped non-practical windows.

43' x 21' - 36 lbs



37-I. Office

Gray stippled walls, brown woodwork and two non-practical doors.

33' x 20' - 31 lbs



40. Lattice Garden with Opening

Lattice work with climbing wisteria and vines. Practical center arch has 4' opening.

43' x 20' - 41 lbs



46. Southern Plantation

Front of southern mansion with pillars framed by Spanish moss in trees, with circular drive in foreground.

38' x 21' - 39 lbs



46-A. Southern Mansion

Distant plantation with path leading to front porch overlooking hillside. Southern foliage.

43' x 20' - 37 lbs

All images Copyright © 2007 Schell Scenic Studio, Inc. Reproduction without permission is strictly prohibited.
Images are intended for reference only. For color renditions of these backdrops, please visit www.SchellScenic.com to download our catalog.



Mame



53-A. Garden with Fountain 43' x 20' - 39 lbs
Formal courtyard with center steps and balustrade opening leading to fountain.



54-E. Barn 43' x 21' - 33 lbs
Front view of barn with porch, implements, center door (non-practical).



56. N.Y. Park Avenue 43' x 21' - 41 lbs
Modernistic buildings facing the Pan Am building. Street center divided by trees and median.



57-I. Barn 30' x 16' - 23 lbs
Rustic barn interior with filled hay loft, barrels, and wagon. Natural barn siding.



57-IA. Barn 32' x 21'6" - 34 lbs
Rustic barn siding, wooden beams and open ceiling with two corn and grain bins and implements.



62-B. Southern Foliage Leg & Border 25' x 21' - 23 lbs
Natural southern foliage with Spanish moss. Border overlaps in center for desired opening.

All images Copyright © 2007 Schell Scenic Studio, Inc. Reproduction without permission is strictly prohibited.
Images are intended for reference only. For color renditions of these backdrops, please visit www.SchellScenic.com to download our catalog.

TEL: (614) 444-9550

FAX: (614) 444-9554

841 South Front Street ♦ Columbus, Ohio ♦ 43206

Schell Scenic Studio, Inc.



Mame



67. College Campus

36' x 20'6" - 29 lbs

Main gates of a typical small town college with four pillars and sidewalk leading to buildings hidden by trees.



75-B. Old Time Street

43' x 21' - 42 lbs

Black-and-white charcoal sketch looking up city street, lined with brick and stone buildings.



75-C. Tenement Street

43' x 21' - 36 lbs

Bright and stone apartment buildings with sidewalk in foreground and additional buildings in distance.



75-D. Victorian Street

43' x 21' - 40 lbs

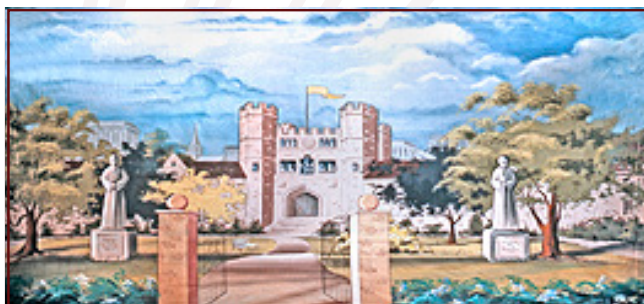
Fronts of Victorian dwellings showing ornate detail, many windows and door entrances.



75-E. Tenement Street

43' x 21' - 40 lbs

Brick and stone apartment buildings with sidewalk, mailbox, and lamppost on street corner.

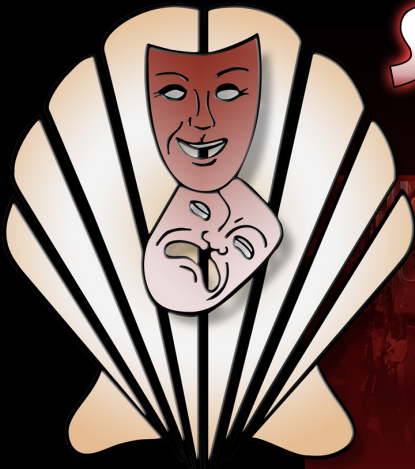


107. College Campus

43' x 20' - 43 lbs

Path and center gate opening leads past statues and trees to stone building in distance.

All images Copyright © 2007 Schell Scenic Studio, Inc. Reproduction without permission is strictly prohibited. Images are intended for reference only. For color renditions of these backdrops, please visit www.SchellScenic.com to download our catalog.

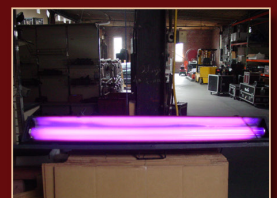


SHELL SCENIC STUDIO ***IS MORE THAN JUST BACKDROPS!***

Sure, you know Schell Scenic Studio as the place to go for your theatrical backdrops, but have you explored the many other services that Schell has to offer?

- Digital Design Studio
- Large-Format Digital Printing Shop
- Lighting Equipment & Accessories
- Special Effects
- Stage Props & Accessories
- And Much More!

Call today and learn how we can help you in all aspects of your next theatrical production!



Schell Scenic Studio, Inc.

Backdrop Recommendations for

Mame

These limited selections can help you get started finding the appropriate drops for your production or event.

Mame

Scenic Backdrop #

The action takes place in Mame's Beekman Place apartment and various locales in which she becomes involved during a period from 1928 to 1946.

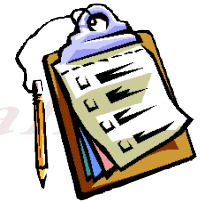
Act I

Scene 1: Somewhere in New York, 1928	#56, #72, #75-B, #75-C, #75-D, #75-E
Scene 2: Mame's apartment	#32-I
Scene 3: Hallway of Mame's apartment	#15-I, #27-I, #37-I, #37-IA, #23-M
Scene 4: Mame's bedroom	#16-I, #22-IA
Scene 5: Mame's living room (and all around New York)	#1-IAB, #22-I
Scene 6: Mame's apartment	#32-I
Scene 7: Schubert's Theatre, New Haven	#6-M, #6-MA
Scene 8: Salon Pour Messiers	
Scene 9: Mame's apartment	#32-I
Scene 10: Peckerwood	#40 with #62-B, #46, #46-A

Act II

Scene 1: Prep School and College (and Singapore)	#67, #107
Scene 2: Mame's apartment	#32-I
Scene 3: Mame's apartment (six months later)	#32-I
Scene 4: Upson Farm	#54-E, #57-I, #57-IA
Scene 5: Mame's apartment	#32-I
Scene 6: Mame's apartment - 1946	#32-I

These are only some of the hundreds of backdrops available at Schell Scenic Studio.
These suggestions are the results of our customers' choices in our many years of service to the theatre.



Things to Do Before You Call:



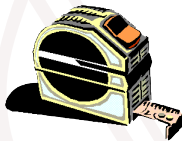
- ✓ **Have a calendar handy to check your dates.**
Make sure you know the exact day you need the drops to arrive and when you can ship them out again.

- ✓ **Plan your rentals in advance.**
During peak backdrop rental seasons (ie. December, June, etc.) it may be necessary to place your rental order 6 - 12 months in advance.



- ✓ **Have your Schell Scenic Catalog on hand.**
Be sure you've reviewed our policies and procedures.

- ✓ **Choose two or three back-up choices per backdrop.**
Make sure you write down second or third choices per backdrop.



- ✓ **Check the measurements of your stage and the drops you are renting.**
Schell Scenic drops come in different dimensions. Make sure that your selected drops will fit your venue.

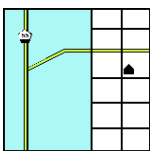


- ✓ **Have a credit card ready.**
To place a reservation on a backdrop you may be asked to do so with a major credit card.



- ✓ **Get a purchase order number.**
Some organizations require that we place their purchase order numbers on invoices.

- ✓ **Write down your Schell order number.**
*We will use this number to access individual orders. **Note: Your signed confirmation is required before your order is ready to process.***



- ✓ **Know your business address.**
UPS can not guarantee timely delivery to residential addresses. This could cause the backdrops to arrive to you later than expected.