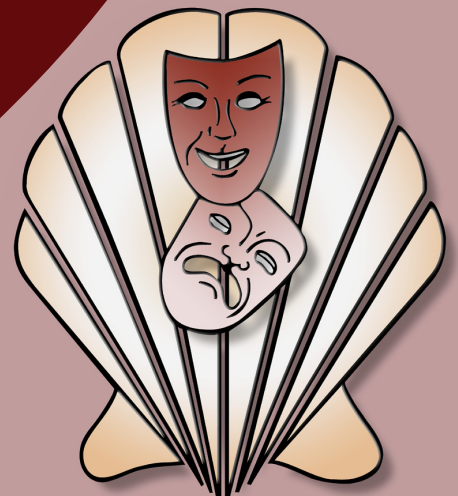


Schell Scenic Studio, Inc.

**Backdrop
Recommendations List
for the staging of
Oliver**

*Over a century of service to the
entertainment industry.*
EST. 1904





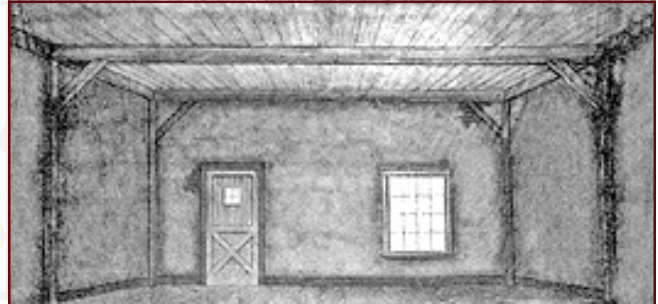
Oliver



11-C. European Street

39' x 21' - 33 lbs

Stone buildings with tile roofs.



13-I. Rough Interior

39' x 20'6" - 36 lbs

Color image unavailable. Overall gray interior with brown trim showing non-practical door and transparent window.



26-IAB. Cottage Inn

39'6" x 19'8" - 32 lbs

Cottage interior with wood, open beamed ceiling. Door and three windows not practical.



39-IA. Library or Office

43' x 21' - 40 lbs

Paneled walls with book shelves left and right of non-practical center window.



75-A. Slum Street

40' x 21' - 39 lbs

Warehouse and storage buildings in a big city alley or easement.



75-D. Victorian Street

43' x 21' - 40 lbs

Fronts of Victorian dwellings showing ornate detail, many windows and door entrances.

All images Copyright © 2007 Schell Scenic Studio, Inc. Reproduction without permission is strictly prohibited. Images are intended for reference only. For color renditions of these backdrops, please visit www.SchellScenic.com to download our catalog.

TEL: (614) 444-9550
FAX: (614) 444-9554

Schell Scenic Studio, Inc.

841 South Front Street ♦ Columbus, Ohio ♦ 43206



Oliver



95. London Street

40' x 21' - 40 lbs

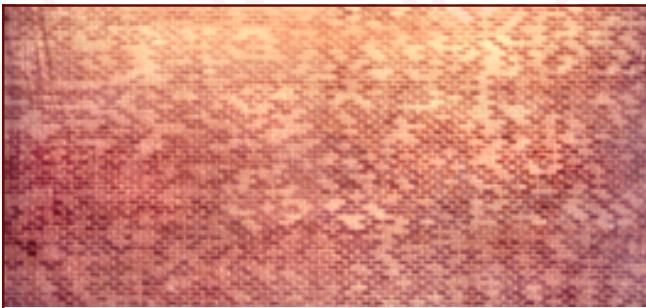
Brick and stone houses along a typical London street, with cathedral in background.



95-A. London Street

43' x 21' - 37 lbs

London residential neighborhood looking up streets towards St. Paul's Cathedral and other buildings.



104-B. Brick Wall

43' x 21' - 39 lbs

Brick wall painted on muslin.



104-C. Brick Wall

43' x 20' - 37 lbs

Brick wall painted on muslin.

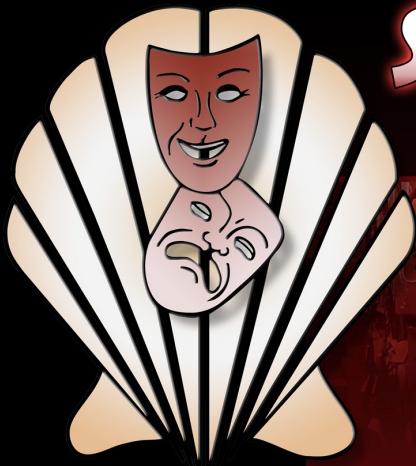
Don't Forget to Plan Your Rentals in Advance...

At Schell Scenic Studio we experience a number of "Peak Backdrop Rental Seasons" throughout the year. Because of this we recommend that you plan all of your backdrop rentals at least 6 - 12 months in advance. By planning your rentals in advance you decrease the risk of having to accept a substitute backdrop.

Thank you, and we look forward to assisting you on your next production!

- The Schell Scenic Studio

All images Copyright © 2007 Schell Scenic Studio, Inc. Reproduction without permission is strictly prohibited.
Images are intended for reference only. For color renditions of these backdrops, please visit www.SchellScenic.com to download our catalog.

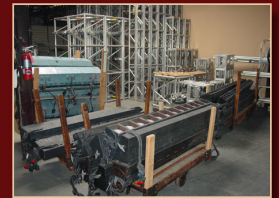


SHELL SCENIC STUDIO ***IS MORE THAN JUST BACKDROPS!***

Sure, you know Schell Scenic Studio as the place to go for your theatrical backdrops, but have you explored the many other services that Schell has to offer?

- Digital Design Studio
- Large-Format Digital Printing Shop
- Lighting Equipment & Accessories
- Special Effects
- Stage Props & Accessories
- And Much More!

Call today and learn how we can help you in all aspects of your next theatrical production!



Schell Scenic Studio, Inc.

Backdrop Recommendations for

Oliver

These limited selections can help you get started finding the appropriate drops for your production or event.

Drops which have been provided for other customers include:

#11-C, #13-I, #26-IAB, #39-IA, #75-A, #75-D,
#95, #95-A, #104-B, #104-C

These are only suggestions from previous rentals.
We have many more drops in our catalog which might better suit you style.

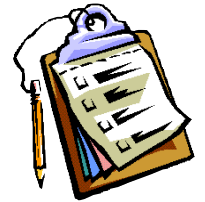


If you have an innovative and creative staging with our backdrops,
please don't hesitate to contact us. We are always interested in the ways that
our customers make use of our scenics.

info@schellscenic.com

These are only some of the hundreds of backdrops available at Schell Scenic Studio.
These suggestions are the results of our customers' choices in our many years of service to the theatre.

Things to Do Before You Call:



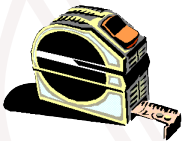
- ✓ **Have a calendar handy to check your dates.**
Make sure you know the exact day you need the drops to arrive and when you can ship them out again.

- ✓ **Plan your rentals in advance.**
During peak backdrop rental seasons (ie. December, June, etc.) it may be necessary to place your rental order 6 - 12 months in advance.



- ✓ **Have your Schell Scenic Catalog on hand.**
Be sure you've reviewed our policies and procedures.

- ✓ **Choose two or three back-up choices per backdrop.**
Make sure you write down second or third choices per backdrop.



- ✓ **Check the measurements of your stage and the drops you are renting.**
Schell Scenic drops come in different dimensions. Make sure that your selected drops will fit your venue.

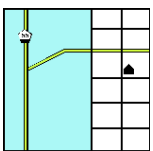


- ✓ **Have a credit card ready.**
To place a reservation on a backdrop you may be asked to do so with a major credit card.



- ✓ **Get a purchase order number.**
Some organizations require that we place their purchase order numbers on invoices.

- ✓ **Write down your Schell order number.**
*We will use this number to access individual orders. **Note: Your signed confirmation is required before your order is ready to process.***



- ✓ **Know your business address.**
UPS can not guarantee timely delivery to residential addresses. This could cause the backdrops to arrive to you later than expected.