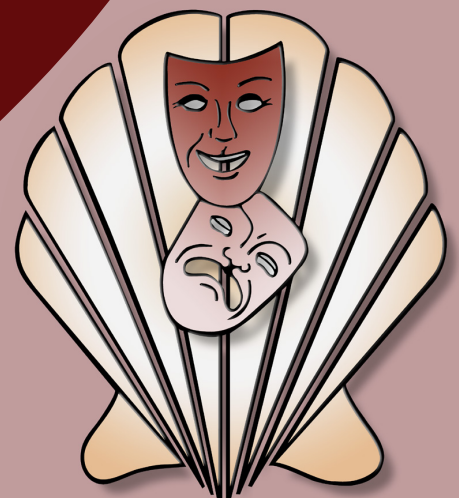


Schell Scenic Studio, Inc.

**Backdrop
Recommendations List
for the staging of
Once Upon a Mattress**



*Over a century of service to the
entertainment industry.*
EST. 1904



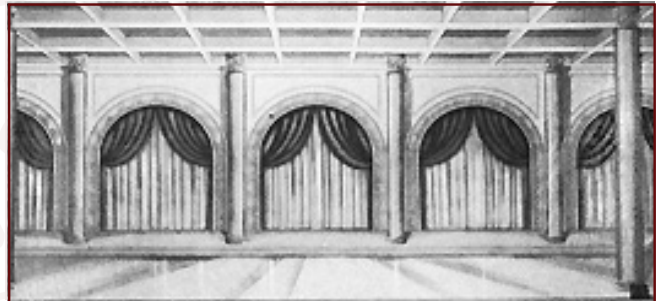
Once Upon a Mattress



1-E. Fairyland Castle

43' x 21' - 38 lbs

Sandstone castle with moat and center gate. Gate not practical.



1-IAC. Palace

43' x 21' - 42 lbs

Typical palace ballroom with natural colors. Color image unavailable.



35-I. Stone Arch

41' x 21' - 42 lbs

Three practical arched openings, stone block wall. center arch 16' high, left and right arches 14' high.



53. Garden

38' x 21' - 40 lbs

Formal garden with stone wall, steps, and pool. Buildings in distance.



73-CB. Woods

30' x 16' - 23 lbs

Open woods with small clearing in center.

Don't Know What You Need?

So, you have a big production coming up,
but you don't know what you need...

Give us a call, that's why we're here!

*We would be happy to recommend a selection
of backdrops that meet your specific needs!*

All images Copyright © 2007 Schell Scenic Studio, Inc. Reproduction without permission is strictly prohibited.
Images are intended for reference only. For color renditions of these backdrops, please visit www.SchellScenic.com to download our catalog.

TEL: (614) 444-9550

FAX: (614) 444-9554

841 South Front Street ♦ Columbus, Ohio ♦ 43206

Schell Scenic Studio, Inc.



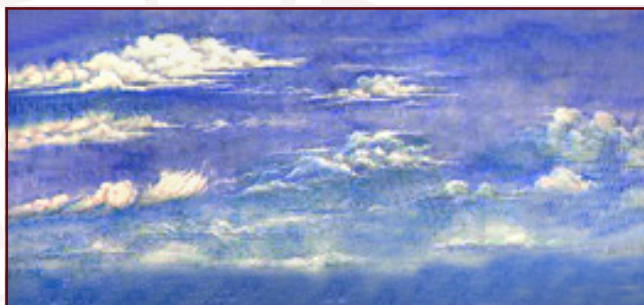
Once Upon a Mattress



78. Sky & Wall

38' x 20' - 37 lbs

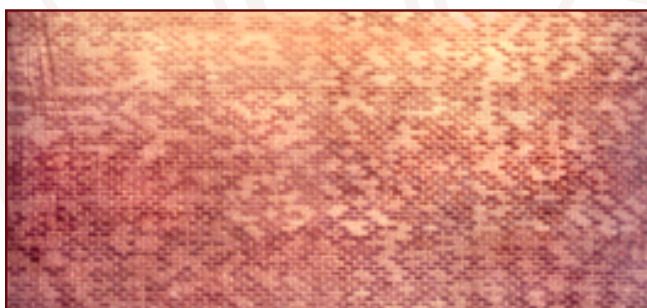
Stone wall with flowering vines and practical center arch. Opening is 4'W x 10' H approx.



97-AA. Sky & Clouds

43' x 20' - 41 lbs

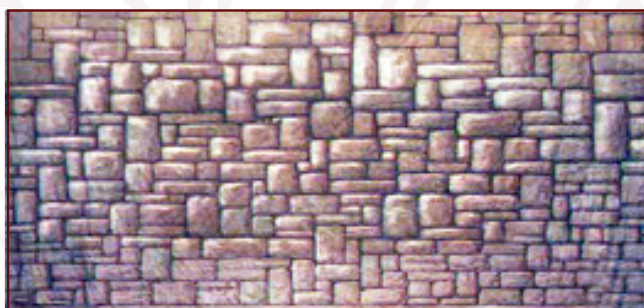
Thin cirrus clouds on a blue background.



104-B. Brick Wall

43' x 21' - 39 lbs

Brick wall painted on muslin.



104-E. Stone Wall

30' x 16' - 29 lbs

Stone wall painted on muslin.

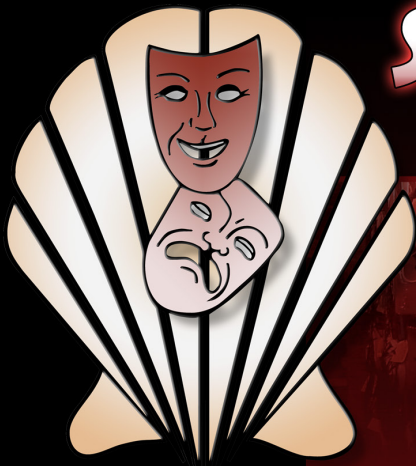
Don't Forget to Plan Your Rentals in Advance...

At Schell Scenic Studio we experience a number of "Peak Backdrop Rental Seasons" throughout the year. Because of this we recommend that you plan all of your backdrop rentals at least 6 - 12 months in advance. By planning your rentals in advance you decrease the risk of having to accept a substitute backdrop.

Thank you, and we look forward to assisting you on your next production!

- The Schell Scenic Studio

All images Copyright © 2007 Schell Scenic Studio, Inc. Reproduction without permission is strictly prohibited.
Images are intended for reference only. For color renditions of these backdrops, please visit www.SchellScenic.com to download our catalog.

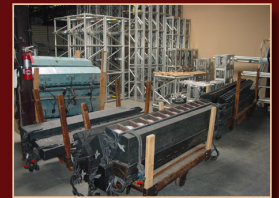
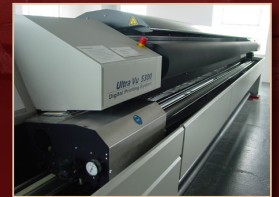


SHELL SCENIC STUDIO ***IS MORE THAN JUST BACKDROPS!***

Sure, you know Schell Scenic Studio as the place to go for your theatrical backdrops, but have you explored the many other services that Schell has to offer?

- Digital Design Studio
- Large-Format Digital Printing Shop
- Lighting Equipment & Accessories
- Special Effects
- Stage Props & Accessories
- And Much More!

Call today and learn how we can help you in all aspects of your next theatrical production!



Schell Scenic Studio, Inc.

Backdrop Recommendations for

Once Upon a Mattress

These limited selections can help you get started finding the appropriate drops for your production or event.

Drops which have been provided for other customers include:

#1-E, #1-IAC, #35-I, #53, #73-Cb, #78, #97-AA, #104-B, #104-E

These are only suggestions from previous rentals.

We have many more drops in our catalog which might better suit you style.

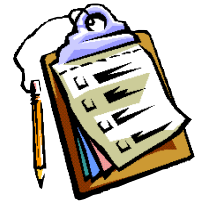


If you have an innovative and creative staging with our backdrops, please don't hesitate to contact us. We are always interested in the ways that our customers make use of our scenics.

info@schellscenic.com

These are only some of the hundreds of backdrops available at Schell Scenic Studio. These suggestions are the results of our customers' choices in our many years of service to the theatre.

Things to Do Before You Call:



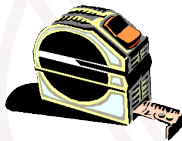
- ✓ **Have a calendar handy to check your dates.**
Make sure you know the exact day you need the drops to arrive and when you can ship them out again.

- ✓ **Plan your rentals in advance.**
During peak backdrop rental seasons (ie. December, June, etc.) it may be necessary to place your rental order 6 - 12 months in advance.



- ✓ **Have your Schell Scenic Catalog on hand.**
Be sure you've reviewed our policies and procedures.

- ✓ **Choose two or three back-up choices per backdrop.**
Make sure you write down second or third choices per backdrop.



- ✓ **Check the measurements of your stage and the drops you are renting.**
Schell Scenic drops come in different dimensions. Make sure that your selected drops will fit your venue.

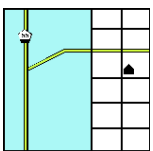


- ✓ **Have a credit card ready.**
To place a reservation on a backdrop you may be asked to do so with a major credit card.



- ✓ **Get a purchase order number.**
Some organizations require that we place their purchase order numbers on invoices.

- ✓ **Write down your Schell order number.**
*We will use this number to access individual orders. **Note: Your signed confirmation is required before your order is ready to process.***



- ✓ **Know your business address.**
UPS can not guarantee timely delivery to residential addresses. This could cause the backdrops to arrive to you later than expected.