

SHELL SCENIC STUDIO, INC.

**Backdrop
Recommendations List
for the staging of**

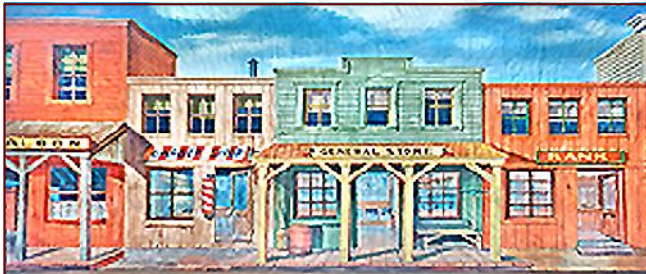
**Seven Brides
for
Seven Brothers**



*Over a Century of Service to the
Entertainment Industry
EST. 1904*



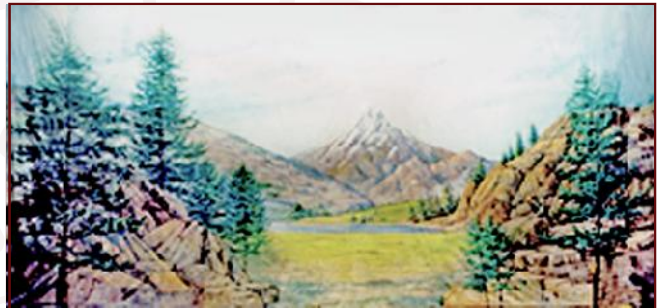
Seven Brides for Seven Brothers



28-C. Western Street

39' x 21' - 29 lbs

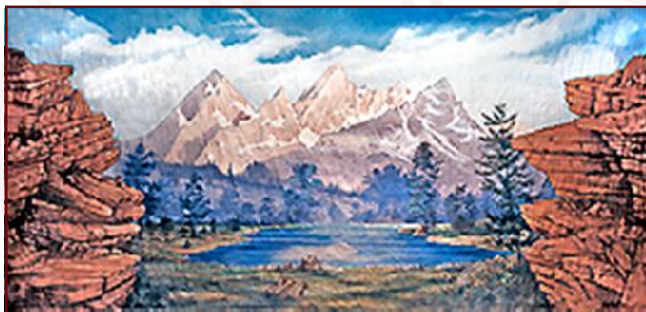
Typical old-time Western street with clapboard buildings.



39. Mountain

42' x 20' - 40 lbs

Snow-capped mountain in center, surrounded by fir trees and rocks.



39-E. Mountain

43' x 20' - 40 lbs

Snow-capped mountain in center, surrounded by fir trees and rocks.

Did You Know?

Did you know that Schell Scenic Studio has been a cornerstone of the theatre community in Columbus, Ohio since 1904?

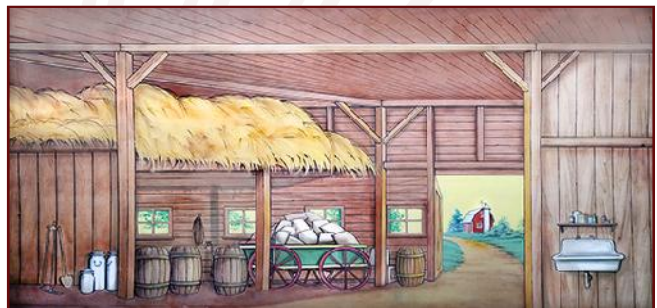
Give us a call, and let us put a century of industry knowledge to work for you!



48-D. Landscape

39' x 21' - 37 lbs

Rolling hills and scrub pines in foreground with open meadows in distance.



57-IB. Barn

43' x 2' - 40 lbs

Barn interior with farmhouse in the distance.

All images Copyright ©2005 - 2015 Schell Scenic Studio, Inc. Reproduction without permission is strictly prohibited. Images are intended for reference use only. Due to variations in monitors and printers, accurate color representation is neither implied nor guaranteed. All Images are low resolution, and will become pixelated if viewed above 200% magnification. Higher resolution photos are not available.

TEL: (614) 444-9550

FAX: (614) 444-9554

SCHELL SCENIC STUDIO, INC.

841 S. Front St. ♦ Columbus, Ohio ♦ 43206



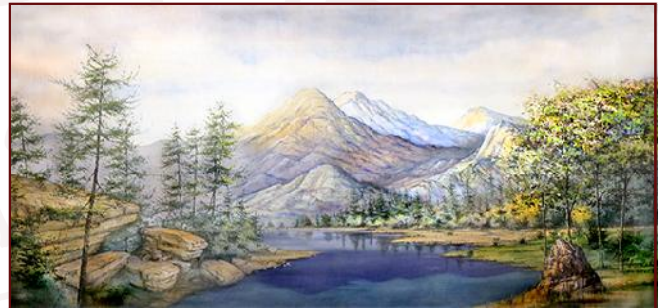
Seven Brides for Seven Brothers



60-K. Winter Scene

43' x 20' - 40 lbs

Heavily snow-covered trees at forest edge.



62-C. Rocky Mountain

40' x 20' - 42 lbs

Rugged rocks at high elevation with scrub pines clearing.



69-C. Winter Snow Scene

39' x 20' - 35 lbs

Ice-covered countryside with snow-covered spruces which line the banks of a lake or stream.



82-A. Open Woods

43' x 20' - 38 lbs

Edge of dense forest looking through to rolling hills in distance.

Don't Forget to Plan Your Rentals in Advance...

At Schell Scenic Studio we experience a number of "Peak Backdrop Rental Seasons" throughout the year. *Because of this we recommend that you plan all of your backdrop rentals at least 6 - 12 months in advance. By planning your rentals in advance you decrease the risk of having to accept a substitute backdrop.*

Thank you, and we look forward to assisting you on your next production!

- The Schell Scenic Studio

All images Copyright ©2005 - 2015 Schell Scenic Studio, Inc. Reproduction without permission is strictly prohibited. Images are intended for reference use only. Due to variations in monitors and printers, accurate color representation is neither implied nor guaranteed. All Images are low resolution, and will become pixelated if viewed above 200% magnification. Higher resolution photos are not available.



SHELL SCENIC STUDIO ***IS MORE THAN JUST BACKDROPS!***

Sure, you know Schell Scenic Studio as the place to go for your theatrical backdrops, but have you explored the many other services that Schell has to offer?

Call today and learn how we can help you in all aspects of your next theatrical production!

- Digital Design Studio
- Large-Format Digital Printing Shop
- Lighting Equipment & Accessories
- Special Effects
- Stage Props & Accessories
- And Much More!



Schell Scenic Studio, Inc.

Backdrop Recommendations for Seven Brides for Seven Brothers

These limited selections can help you get started finding the appropriate drops for your production or event.

Drops which have been provided for other customers include:

#28-C, #39, #39-E, #48-O, #57-IB, #60-K, #62-C, #69-C, #82-A

These are only suggestions from previous rentals.
We have many more drops in our catalog which might better suit your style.



If you have an innovative and creative staging with our backdrops,
please don't hesitate to contact us. We are always interested in the ways that
our customers make use of our scenics.

info@schellscenic.com

These are only some of the hundreds of backdrops available at Schell Scenic Studio.
These suggestions are the results of our customers' choices in our many years of service to the theatre.

Things to Do Before You Call:



Have a calendar handy to check your dates.

Make sure you know the exact day you need the drops to arrive and when you can ship them out again.

Plan your rentals in advance.

During peak backdrop rental seasons (ie. December, June, etc.) it may be necessary to place your rental order 6 - 12 months in advance.



Have your Schell Scenic Catalog on hand.

Be sure you've reviewed our policies and procedures.

Choose two or three back-up choices per backdrop.

Make sure you write down second or third choices per backdrop.



Check the measurements of your stage and the drops you are renting.

Schell Scenic drops come in different dimensions. Make sure that your selected drops will fit your venue.



Have a credit card ready.

To place a reservation on a backdrop you may be asked to do so with a major credit card.

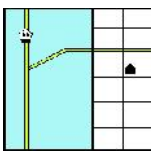
Get a purchase order number.

Some organizations require that we place their purchase order numbers on invoices.



Write down your Schell order number.

*We will use this number to access individual orders. **Note: Your signed confirmation is required before your order is ready to process.***



Know your business address.

UPS can not guarantee timely delivery to residential addresses. This could cause the backdrops to arrive to you later than expected.