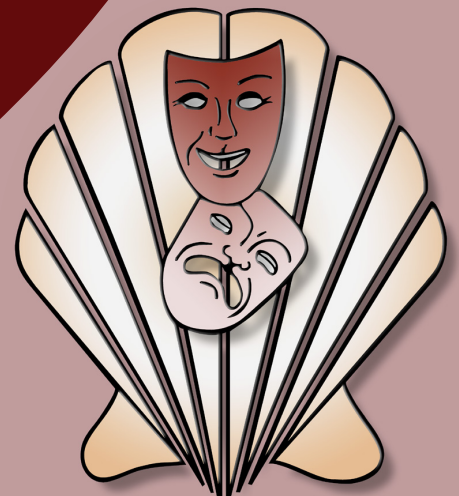


Schell Scenic Studio, Inc.

**Backdrop  
Recommendations List  
for the staging of  
The Sound of Music**



*Over a century of service to the  
entertainment industry.*  
EST. 1904



## The Sound of Music



**7. Mountain and River**

43' x 20' - 40 lbs

Valley with fir trees overlooks mountains and river. Path on stage left leads towards river.



**8. Rhine River Mountain**

30' x 14' - 22 lbs

Riverboats at the Lorelei and castle on opposite hillside.



**14-I. Church Interior**

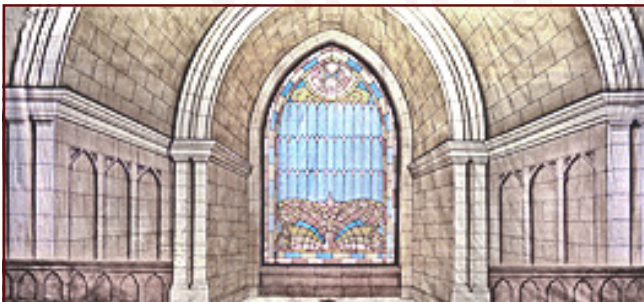
39' x 21' - 33 lbs

Stone walls and arches, tile floor with stained glass window in center.

### Did You Know?

Did you know that Schell Scenic Studio has been a cornerstone of the theatre community in Columbus, Ohio since 1904?

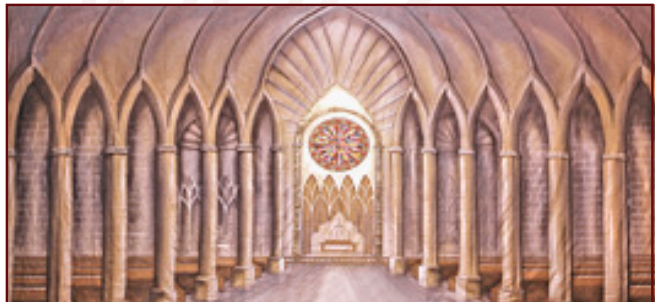
*Give us a call, and let us put a century of industry knowledge to work for you!*



**14-IA. Church Interior**

40' x 16' - 27 lbs

Interior with nonpractical door and transparent window.



**14-IAB. Church Interior**

43' x 20' - 69 lbs

Gothic pillars and arches with center multi-colored rose window above altar.

All images Copyright © 2005 - 2008 Schell Scenic Studio, Inc. Reproduction without permission is strictly prohibited. Images are intended for reference only. For color renditions of these backdrops, please visit [www.SchellScenic.com](http://www.SchellScenic.com) to download our catalog.

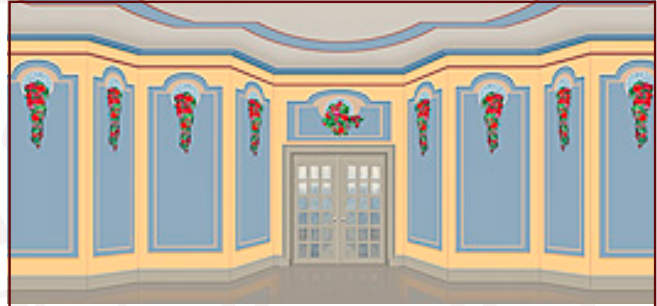




## The Sound of Music



**16-I. Bedroom or Living Room** 39' x 19' - 30 lbs  
*A practical center door and two painted windows.*



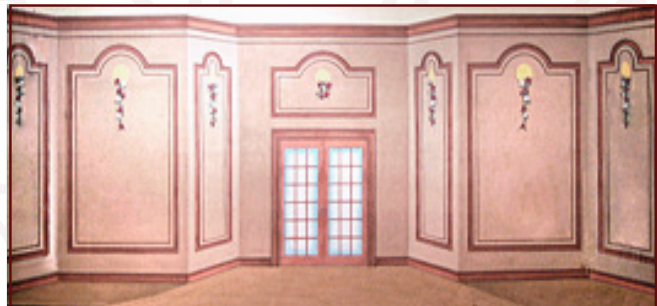
**22-I. Fancy Interior** 39' x 21' - 36 lbs  
*Decorative living room with center french doors (non-practical).*

### *Don't Know What You Need?*

So, you have a big production coming up,  
but you don't know what you need...

**Give us a call, that's why we're here!**

*We would be happy to recommend a selection  
of backdrops that meet your specific needs!*



**22-IAB. Fancy Interior** 43' x 20' - 40 lbs  
*Non-practical french doors and ornate red rose trim.*



**35-I. Stone Arch** 41' x 21' - 42 lbs  
*Three practical arched openings, stone block wall. center arch 16' high,  
left and right arches 14' high.*



**39. Mountain** 42' x 20' - 40 lbs  
*Snow-capped mountain in center, surrounded by fir trees and rocks.*

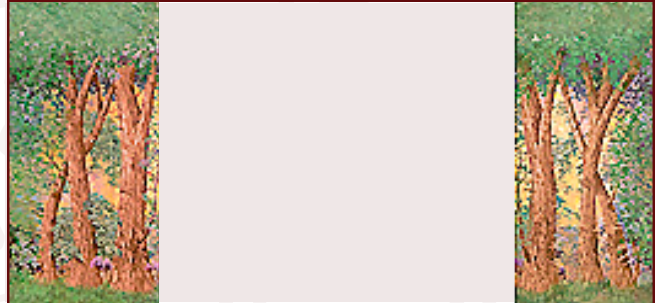
All images Copyright © 2005 - 2008 Schell Scenic Studio, Inc. Reproduction without permission is strictly prohibited.  
Images are intended for reference only. For color renditions of these backdrops, please visit [www.SchellScenic.com](http://www.SchellScenic.com) to download our catalog.



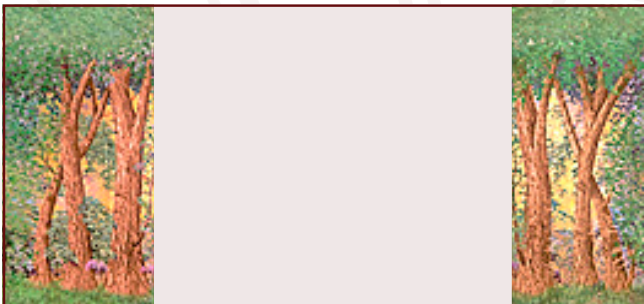
## The Sound of Music



**39-A. Rocky Mountain Pass** 39' x 21' - 31 lbs  
*Barren snow-capped mountains, pine trees and rocks in foreground.*



**51. Foliage Side Tabs** (2) 9' x 20' - 14 lbs (per pair)  
*Natural hardwood and foliage legs.*



**51-A. Foliage Side Tabs** (2) 7'6" x 20'4" - 14 lbs (per pair)  
*Natural hardwood and foliage legs.*

### Can't Find It?

*Can't find what you need? Just give us a call!*

*Our friendly staff is here to help you find the backdrop you need for your next production.*

**614-444-9550**



**79-C. Old Country Villa** 40' x 21' - 34 lbs  
*Stone home with tile roof showing arched gate into courtyard.*



**79-D. Landscape** 43' x 21' - 37 lbs  
*A view from patio balustrade overlooking a lake and hilly countryside, castle in distance.*

All images Copyright © 2005 - 2008 Schell Scenic Studio, Inc. Reproduction without permission is strictly prohibited. Images are intended for reference only. For color renditions of these backdrops, please visit [www.SchellScenic.com](http://www.SchellScenic.com) to download our catalog.



# Schell Scenic Studio, Inc.

## Backdrop Recommendations for

# The Sound of Music

These limited selections can help you get started finding the appropriate drops for your production or event.

## The Sound of Music

Scenic Backdrop #

*The play takes place in Salzburg, Austria early in 1938*

### Act I

Scene 1: Nonnberg Abbey .....	#14-I, #14-IA
Scene 2: Mountainside near the Abbey .....	#7, #8, #39, #39-A with foliage legs #51, #51-A
Scene 3: The office of the Mother Abbess, the next morning .....	#35-I
Scene 4: A corridor in the Abbey .....	#14-I, #14-IA
Scene 5: Living room, the Von Trapp Villa .....	#22-I, #22-IAB
Scene 6: Outside the Von Trapp Villa, that afternoon .....	#79-C, #79-D
Scene 7: Maria's bedroom, later that evening .....	#16-I
Scene 8: The terrace of the Von Trapp Villa, one week later	
Scene 9: A hallway in the Von Trapp Villa, one week later	
Scene 10: The living room, the same evening .....	#22-I
Scene 11: A corridor in the Abbey .....	#14-I, #14-IA
Scene 12: The office of the Mother Abbess, three days later .....	#35-I

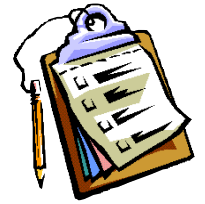
...

### Act II

Scene 1: The terrace, the same day	
Scene 2: A corridor in the Abbey, two weeks later .....	#14-I, #14-IA
Scene 3: The office of the Mother Abbess, immediately following .....	#35-I
Scene 4: A cloister overlooking the chapel .....	#14-I, #14-IA
Scene 5: The living room, one month later .....	#22-I, #22-IAB
Scene 6: The concert hall, three days later..	
Scene 7: The garden of Nonnberg Abbey, that night .....	#39, #39-A, #79-B

These are only some of the hundreds of backdrops available at Schell Scenic Studio.  
These suggestions are the results of our customers' choices in our many years of service to the theatre.

# Things to Do Before You Call:



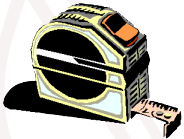
- ✓ **Have a calendar handy to check your dates.**  
*Make sure you know the exact day you need the drops to arrive and when you can ship them out again.*

- ✓ **Plan your rentals in advance.**  
*During peak backdrop rental seasons (ie. December, June, etc.) it may be necessary to place your rental order 6 - 12 months in advance.*



- ✓ **Have your Schell Scenic Catalog on hand.**  
*Be sure you've reviewed our policies and procedures.*

- ✓ **Choose two or three back-up choices per backdrop.**  
*Make sure you write down second or third choices per backdrop.*



- ✓ **Check the measurements of your stage and the drops you are renting.**  
*Schell Scenic drops come in different dimensions. Make sure that your selected drops will fit your venue.*

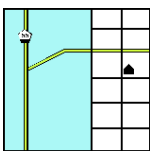


- ✓ **Have a credit card ready.**  
*To place a reservation on a backdrop you may be asked to do so with a major credit card.*



- ✓ **Get a purchase order number.**  
*Some organizations require that we place their purchase order numbers on invoices.*

- ✓ **Write down your Schell order number.**  
*We will use this number to access individual orders. **Note: Your signed confirmation is required before your order is ready to process.***



- ✓ **Know your business address.**  
*UPS can not guarantee timely delivery to residential addresses. This could cause the backdrops to arrive to you later than expected.*