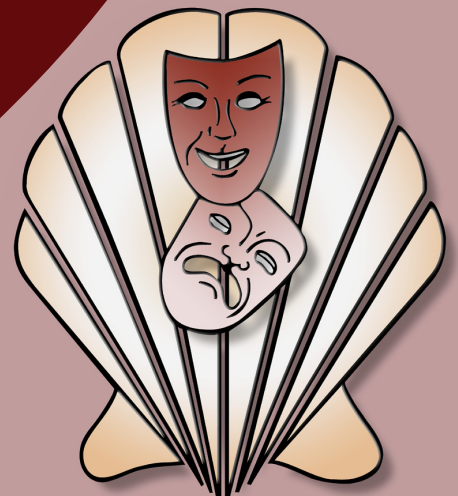


Schell Scenic Studio, Inc.

**Backdrop  
Recommendations List  
for the staging of  
Ten Little Indians**

*Over a century of service to the  
entertainment industry.*  
EST. 1904





# Schell Scenic Studio, Inc.

TEL: (614) 444-9550

FAX: (614) 444-9554

841 South Front Street ♦ Columbus, Ohio ♦ 43206

## Ten Little Indians



**22-IAB. Fancy Interior** 43' x 20' - 40 lbs  
*Non-practical french doors and ornate red rose trim.*



**29-A. Ocean and Beach** 43' x 21' - 34 lbs  
*Rolling surf breaks on a rocky beach.*



**34. Ocean, Horizon & Beach** 43' x 21' - 41 lbs  
*Ocean shoreline with beach.*



**34-D. Ocean & Beach** 43' x 21' - 41 lbs  
*Trees and rocks frame a calm sea and cloud-filled sky.*

**Schell Scenic Studio, Inc.**  
A family tradition of serving the theatre community since 1904.

Welcome to Schell Scenic Studio Online!

We are your best resource for scenic backdrops, stage lighting, theatrical equipment, rigging and supplies. Large inventory and nationwide shipping! Rentals, Sales and Service.

We are the preeminent resource center for scenic backdrops, draperies, lighting, paint, gel (color), scenery, gobos (patterns), stage lighting, special effects equipment and props.

We offer rental and sales of backdrops, draperies, lighting, paint, gel (color), scenery, gobos (patterns), theatrical hardware, fog and haze machines, fog and haze fluid, and sound equipment for installation.

Our products are designed for use in theatres, television.

## www.schellscenic.com

Have you explored the new-and-improved Schell Scenic Studio website?

Log on to [www.schellscenic.com](http://www.schellscenic.com) today and discover a wealth of Schell Scenic Studio information at your fingertips!

Whether you'd like to learn about our digital printing capabilities, download manuals to the latest in lighting and special effects equipment, or track your recent backdrop shipment, look no further!

**You will find all of that and more at [www.schellscenic.com](http://www.schellscenic.com)!**

All images Copyright © 2015 Schell Scenic Studio, Inc. Any reproduction without permission is strictly prohibited. Images are intended for reference only. Due to the variations in monitors and printers, accurate color representation is neither implied or guaranteed.

# Schell Scenic Studio, Inc.

## Backdrop Recommendations for

### Ten Little Indians

These limited selections can help you get started finding the appropriate drops for your production or event.

Drops which have been provided for other customers include:

**#22-IAB, #29-A, #34, #34-D**

These are only suggestions from previous rentals.

We have many more drops in our catalog which might better suit your style.

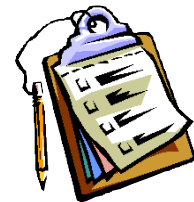


If you have an innovative and creative staging with our backdrops, please don't hesitate to contact us. We are always interested in the ways that our customers make use of our scenics.

*[info@schellscenic.com](mailto:info@schellscenic.com)*

These are only some of the hundreds of backdrops available at Schell Scenic Studio. These suggestions are the results of our customers' choices in our many years of service to the theatre.

# Things to Do Before You Call:



**Have a calendar handy to check your dates.**

*Make sure you know the exact day you need the drops to arrive and when you can ship them out again.*

**Plan your rentals in advance.**

*During peak backdrop rental seasons (ie. December, June, etc.) it may be necessary to place your rental order 6 - 12 months in advance.*

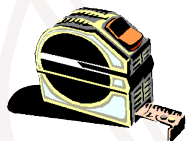


**Have your Schell Scenic Catalog on hand.**

*Be sure you've reviewed our policies and procedures.*

**Choose two or three back-up choices per backdrop.**

*Make sure you write down second or third choices per backdrop.*



**Check the measurements of your stage and the drops you are renting.**

*Schell Scenic drops come in different dimensions. Make sure that your selected drops will fit your venue.*



**Have a credit card ready.**

*To place a reservation on a backdrop you may be asked to do so with a major credit card.*

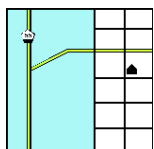


**Get a purchase order number.**

*Some organizations require that we place their purchase order numbers on invoices.*

**Write down your Schell order number.**

*We will use this number to access individual orders. **Note: Your signed confirmation is required before your order is ready to process.***



**Know your business address.**

*UPS can not guarantee timely delivery to residential addresses. This could cause the backdrops to arrive to you later than expected.*